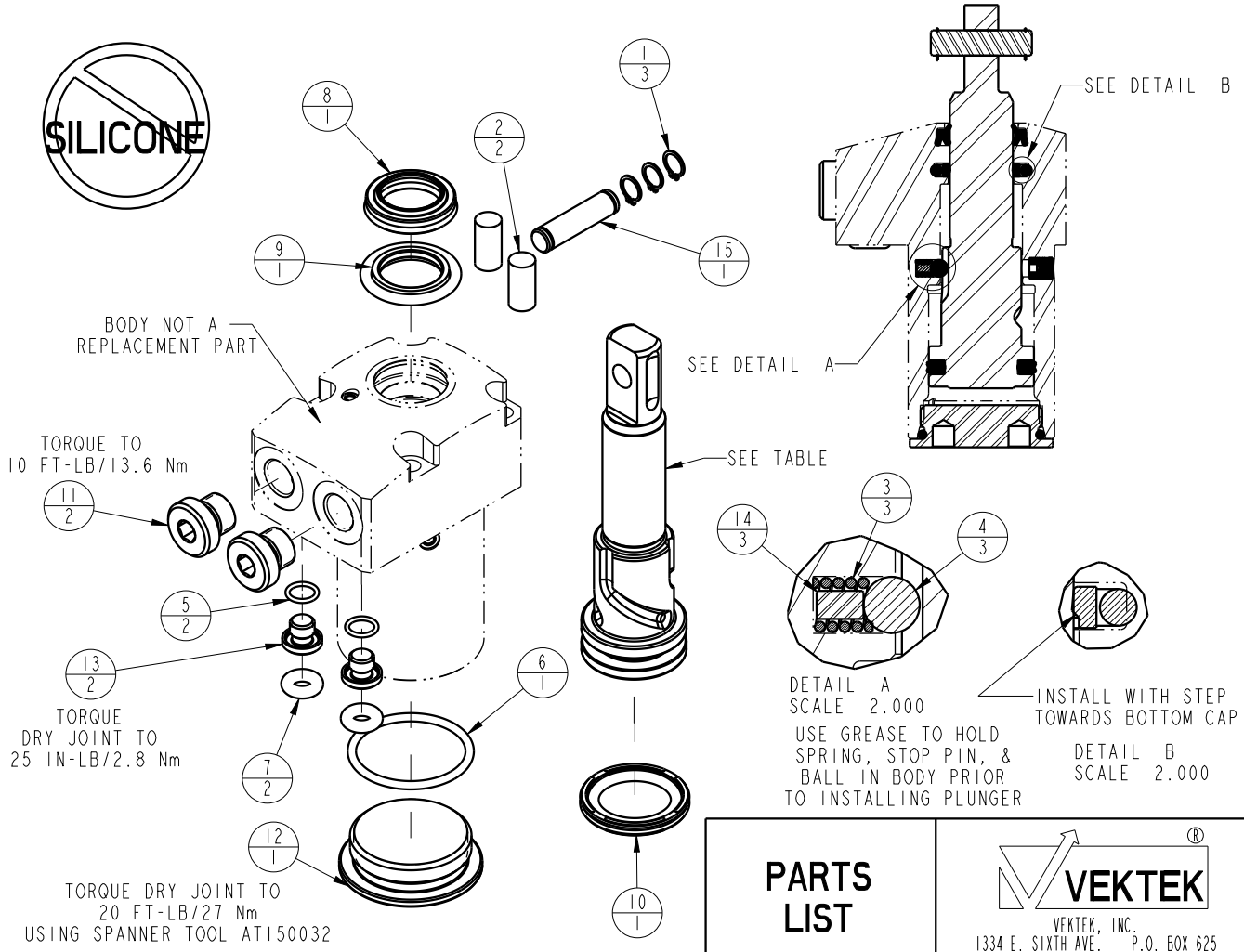


ASSEMBLED MODEL NO.	PLUNGER PART NO.	CAM STYLE	ASSEMBLED ORIENTATION
LI-4025-10-S-0	81400211	STR	0
LI-4025-10-S-60			60
LI-4025-10-S-120			120
LI-4025-10-S-30	81400241		30
LI-4025-10-S-90			90
LI-4025-10-S-150			150
LI-4025-10-L-0	81400221	LH	0
LI-4025-10-L-60			60
LI-4025-10-L-120			120
LI-4025-10-L-30	81400251		30
LI-4025-10-L-90			90
LI-4025-10-L-150			150
LI-4025-10-R-0	81400231	RH	0
LI-4025-10-R-60			60
LI-4025-10-R-120			120
LI-4025-10-R-30	81400261		30
LI-4025-10-R-90			90
LI-4025-10-R-150			150

NO	QTY	PART NO	DESCRIPTION	SEAL KIT	CLEVIS PIN KIT
1	3	23050032	RING, RTNG, EXT, 0.236		X
2	2	23340001	STOCK, CORD, .25 X .50, 50, NBR		X
3	3	23350085	SPRING, COMPRESSION	X	
4	3	23650009	BALL, TUNGSTEN-CARBIDE, 4mm	X	
5	2	39051079	O-RING, (6mm X 1)	X	
6	1	39051081	O-RING, (26mm X 2)	X	
7	2	39051087	O-RING, (4mm X 3)	X	
8	1	39053041	SEAL, WIPER, SNAP IN, WED, 15, 94A, AU	X	
9	1	39056001	SEAL, STEP, ROD, 15	X	
10	1	39056021	SEAL, CAP, PISTON, 25, 90A, AU GRPHT FLD	X	
11	2	43068004	PLUG, SOCH, G1/8		
12	1	81400151	CAP, LC/SC, 7MPa, 25B		
13	2	81400200	PLUG, MANIFOLD, 7MPa, M6		
14	3	81400202	PIN, STOP, BALL, METRIC, 4mm BALL	X	
15	1	81400271	PIN, ROCKER, SC, 7MPa, 25B		X
N/A	N/A	L6014250	KIT, SEAL, SC, 7MPa, 25B	NOTED	N/A
N/A	N/A	L6214250	KIT, CLEVIS PIN, SC, 7MPa, 25B	N/A	NOTED



PARTS LIST	 VEKTEK, INC. 1334 E. SIXTH AVE. P.O. BOX 625 EMPORIA, KS. 66801 U.S.A.
ASSEMBLIES AFFECTED SEE ASSEMBLY MODEL NO. TABLE ABOVE	SHEET 1 OF 1

B	3273	RELEASE	JDW	08/15/18
REV	IN ACCORDANCE WITH ECN	EFFECTIVE DATE	REVISED BY	DATE
DRW BY: MAJ	DRAWING STATUS: Released			
DATE: 4-16-15	PRODUCTION APPROVED FOR RELEASED STATUS ONLY			