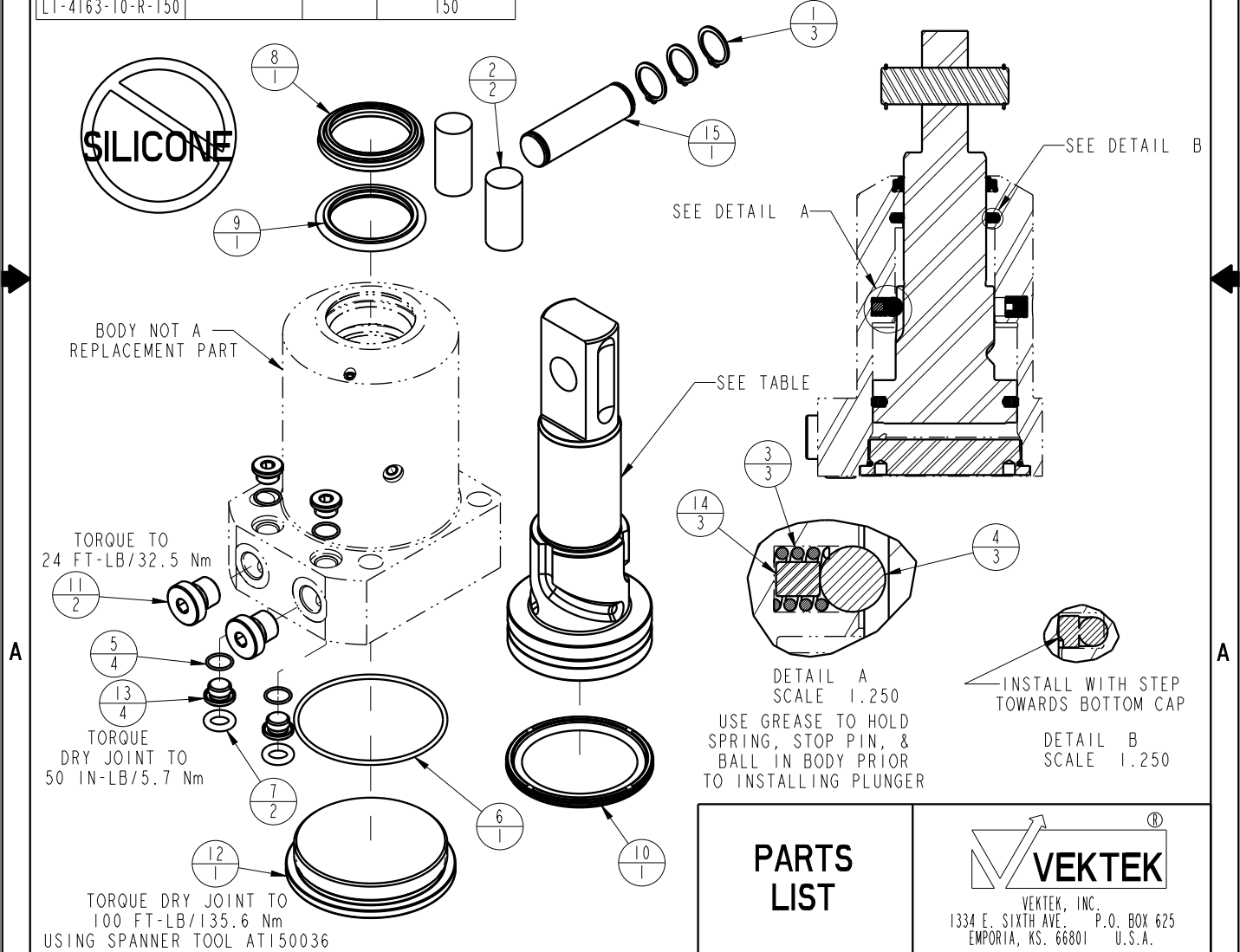


ASSEMBLED MODEL NO.	PLUNGER PART NO.	CAM STYLE	ASSEMBLED ORIENTATION
LI-4163-10-S-0	81400215	STR	0
LI-4163-10-S-60			60
LI-4163-10-S-120			120
LI-4163-10-S-30			30
LI-4163-10-S-90			90
LI-4163-10-S-150	81400225	LH	0
LI-4163-10-L-60			60
LI-4163-10-L-120			120
LI-4163-10-L-30			30
LI-4163-10-L-90			90
LI-4163-10-L-150	81400235	RH	0
LI-4163-10-R-60			60
LI-4163-10-R-120			120
LI-4163-10-R-30			30
LI-4163-10-R-90			90
LI-4163-10-R-150	81400265		150

NO	QTY	PART NO	DESCRIPTION	SEAL KIT	CLEVIS PIN KIT
1	3	23050024	RING, RTNG, EXT, 0.625		X
2	2	23340005	STOCK, CORD, .63 X 1.31, 50, NBR		X
3	3	23350087	SPRING, COMPRESSION	X	
4	3	23650011	BALL, TUNGSTEN-CARBIDE, 8mm	X	
5	4	39051080	O-RING, (10mm X 1)	X	
6	1	39051085	O-RING, (63mm X 2)	X	
7	2	39051088	O-RING, (8mm X 3)	X	
8	1	39053046	SEAL, WIPER, SNAP IN, WED, 36, 94A, AU	X	
9	1	39056006	SEAL, STEP, ROD, 36	X	
10	1	39056025	SEAL, CAP, PISTON, 63, 90A, AU GRPHT FLD	X	
11	2	43068006	PLUG, PORT, HOLLOW HEX, G1/4		
12	1	81400155	CAP, LC/SC, 7MPa, 63B		
13	4	81400201	PLUG, MANIFOLD, 7MPa, M10		
14	3	81400204	PIN, STOP, BALL, METRIC, 8mm BALL	X	
15	1	81400275	PIN, ROCKER, SC, 7MPa, 63B		X
N/A	N/A	L6014630	KIT, SEAL, SC, 7MPa, 63B	NOTED	N/A
N/A	N/A	L6214630	KIT, CLEVIS PIN, SC, 7MPa, 63B	N/A	NOTED



PARTS LIST	
	VEKTEK, INC. 1334 E. SIXTH AVE. P.O. BOX 625 EMPORIA, KS. 66801 U.S.A.
ASSEMBLIES AFFECTED SEE ASSEMBLY MODEL NO. TABLE ABOVE	PARTS LIST, ASSY, SC, BF, 7MPa, 63B, CLEVIS
SIZE A	LPL1434
	REV B

B	3273	RELEASE	JDW	08/15/18
REV	IN ACCORDANCE WITH ECN	EFFECTIVE DATE	REVISED BY	DATE
DRW BY: MAJ	DRAWING STATUS: Released			
DATE: 4-16-15	PRODUCTION APPROVED FOR RELEASED STATUS ONLY			

SHEET 1 OF 1