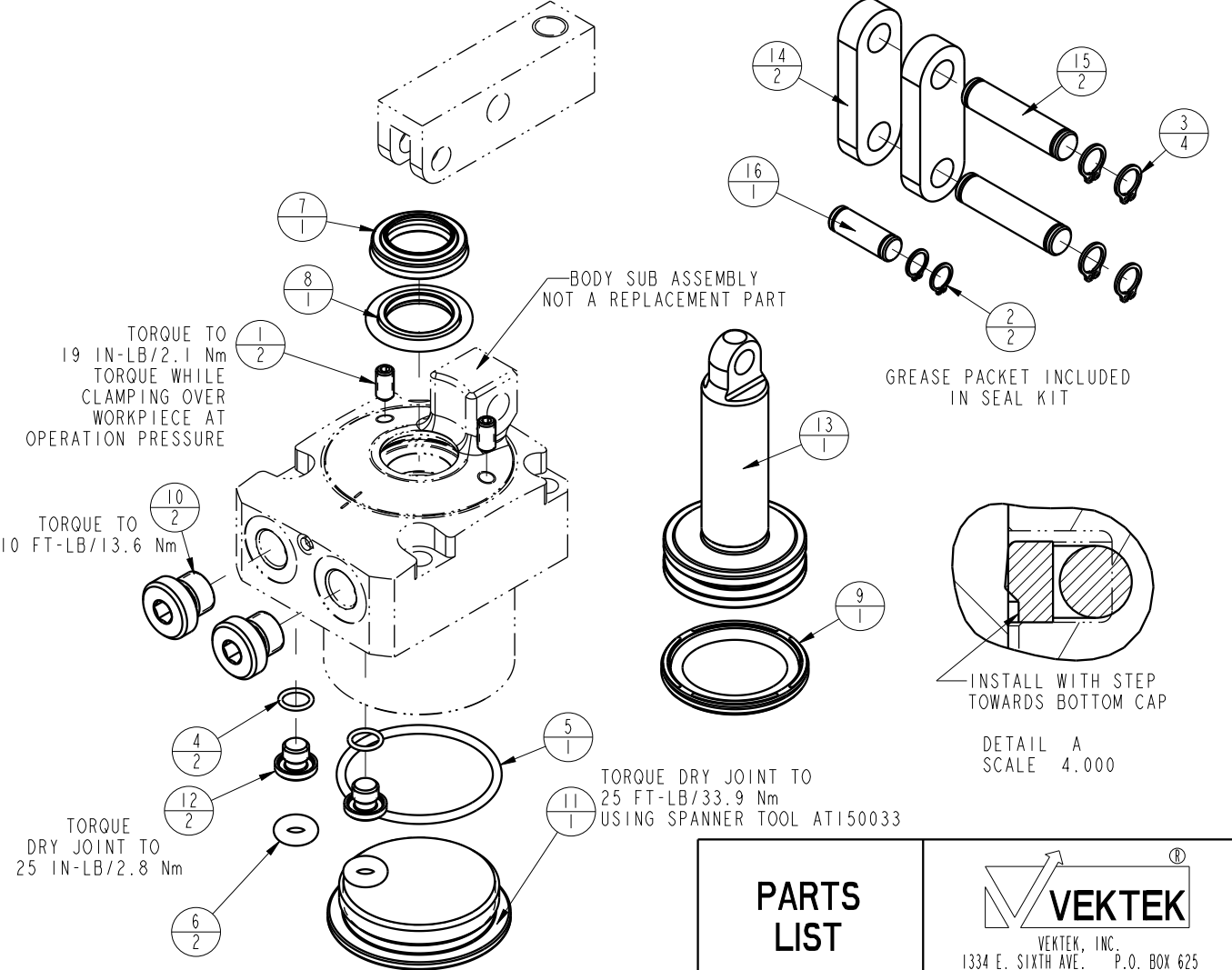



NO	QTY	PART NO	DESCRIPTION	SEAL KIT
1	2	21500317	SCREW, SET, CUP PT, M4 X .7 X 8	
2	2	23050032	RING, RTNG, EXT, 0.236	X
3	4	23050033	RING, RTNG, EXT, 0.276	X
4	2	39051079	O-RING, (6mm X 1)	X
5	1	39051082	O-RING, (33mm X 2)	X
6	2	39051087	O-RING, (4mm X 3)	X
7	1	39053041	SEAL, WIPER, SNAP IN, WED, 15, 94A, AU	X
8	1	39056001	SEAL, STEP, ROD, 15	X
9	1	39056012	SEAL, CAP, PISTON, 32, 94A, AU	X
10	2	43068004	PLUG, SOCH, G1/8	
11	1	81400152	CAP, LC/SC, 7MPa, 32B	
12	2	81400200	PLUG, MANIFOLD, 7MPa, M6	
13	1	81600141	PLUNGER, LC, 7MPa, 32B	
14	2	81600146	LINK, LC, 7MPa, 32B	
15	2	81600151	PIN, LINK, LC, 7MPa, 32B	
16	1	81600156	PIN, PLUNGER, LC, 7MPa, 32B	
N/A	N/A	L6016320	KIT, SEAL, LC, 7MPa, 32B	NOTED

SECTION A-A  
SCALE .750



<b>PARTS LIST</b>	 VEKTEK, INC. 1334 E. SIXTH AVE. P.O. BOX 625 EMPORIA, KS. 66801 U.S.A.	
	ASSEMBLIES AFFECTED L1603200	PARTS LIST, ASSY, LC, 7MPa, 32B ROTARY LUG
DATE: 7-16-13	DRAWING STATUS: <b>Released</b> PRODUCTION APPROVED FOR RELEASED STATUS ONLY	SIZE A <b>LPL1601</b> REV C

C	3273	RELEASE	JDW	08/15/18
REV	IN ACCORDANCE WITH ECN	EFFECTIVE DATE	REVISED BY	DATE