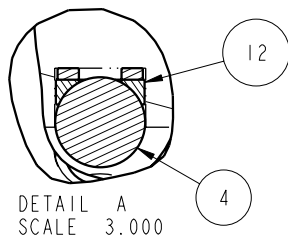
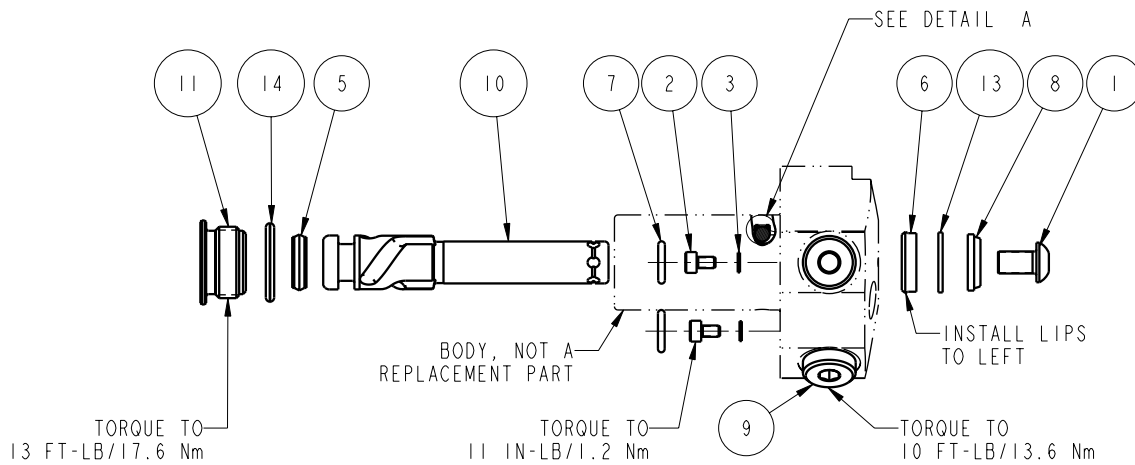



NO	QTY	PART NO	DESCRIPTION	STD SEAL KIT	FKM SEAL KIT
1	1	21500008	SCREW, CAP, BTNH, M6 X 10, ALY		
2	2	21500018	SCREW, CAP, SOCH, M3 X 5, ALY		
3	2	21500200	WASHER, .124x.207x.024, COPPER		
4	3	23650002	BALL, TUNGSTEN-CARBIDE.156	X	X
5	1	39010037	SEAL, CROWN, 3/8x9/16x5/32, 90AU	X	39V10037
6	1	39010038	SEAL, BEV, 7/16x3/32x5/8, 85 HNBR	X	39052014
7	2	39050042	O-RING, (-011), .301x.070, 90 AUD	X	39051025
8	1	39053004	WIPER, SNAP-IN, (7/16), 70 FKM	X	X
9	2	43068004	PLUG, SOCH, G1/8		
10	1	47510503	PLUNGER, SC, HS, 2KN, LH		
11	1	81400028	RETAINER, SC, HS, 450		
12	3	90199956	ASSY, BALLSEAT, SC, 450	X	X
13	1	39F54000	BU RING, (-111), HYTREL	X	X
14	1	39V00036	O-RING, (-908), .644x.087.90 FKM	X	X
N/A	N/A	60414501	KIT, SEAL, STANDARD		
N/A	N/A	6V414501	KIT, SEAL, FKM		



<b>PARTS LIST</b>	 <b>VEKTEK</b> VEKTEK, INC. 1334 E. SIXTH AVE. P.O. BOX 625 EMPORIA, KS. 66801 U.S.A.
	ASSEMBLIES AFFECTED 41460222
PARTS LIST, ASSY, SC, TF, TC, 2KN, DA, LH SIZE A <b>MPL1405</b>	REV B SHEET 1 OF 1

B	2583	RELEASE	K. ROEMER	10/25/13
REV	IN ACCORDANCE WITH ECN	EFFECTIVE DATE	REVISED BY	DATE
DRW BY: JDW	<b>DRAWING STATUS: Released</b> PRODUCTION APPROVED FOR RELEASED STATUS ONLY			
DATE: 03/13/13				