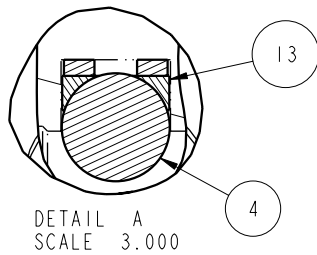
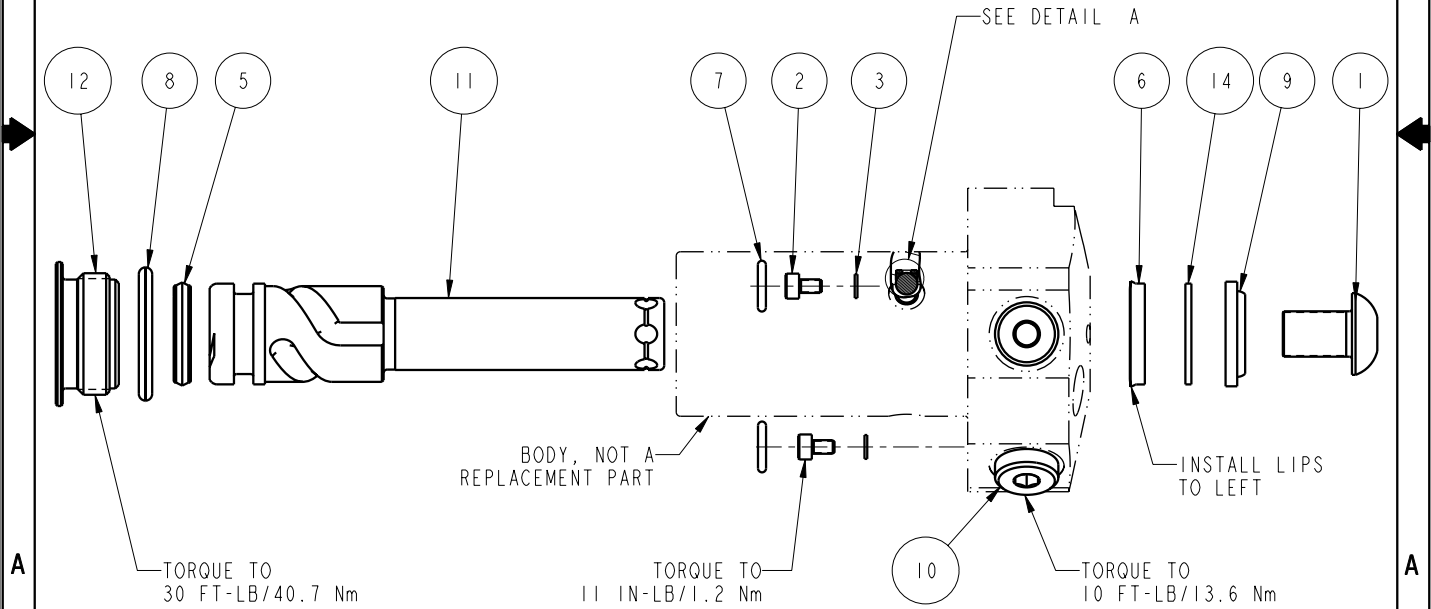


NO	QTY	PART NO	DESCRIPTION	STD SEAL KIT	FKM SEAL KIT
1	1	21500009	SCREW, CAP, BTNH, M10 X 16, ALY		
2	2	21500018	SCREW, CAP, SOCH, M3 X 5, ALY		
3	2	21500200	WASHER, .124x.207x.024, COPPER		
4	3	23650003	BALL, TUNGSTEN-CARBIDE. 188	X	X
5	1	39010018	SEAL, CROWN, 11/16x7/8x5/32, 90AU	X	39VI0018
6	1	39010020	SEAL, BEV, INSR, 5/8x1/8x7/8, 85 AU	X	39VI0020
7	2	39050042	O-RING, (-011), .301x.070, 90 AUD	X	39051025
8	1	39051031	O-RING, (-912), .924x.116, 95 FKM	X	X
9	1	39053001	WIPER, SNAP-IN, (5/8), 90 FKM	X	X
10	2	43068004	PLUG, SOCH, G1/8		
11	1	47510904	PLUNGER, SC, HS, 4.9KN, RH		
12	1	81400029	RETAINER, SC, HS, 1100		
13	3	90199957	ASSY, BALLSEAT, SC, 1100	X	X
14	1	39F54001	BU RING, (-208), HYTREL	X	X
N/A	N/A	60414502	KIT, SEAL, STANDARD		
N/A	N/A	6V414502	KIT, SEAL, FKM		



PARTS LIST	
	VEKTEK, INC. 1334 E. SIXTH AVE. P.O. BOX 625 EMPORIA, KS. 66801 U.S.A.
ASSEMBLIES AFFECTED 41460521	PARTS LIST, ASSY, SC, TF, TC, 4.9KN, DA, RH
SIZE A	MPL1410
REV B	

B	2583	RELEASE	K. ROEMER	10/25/13
REV	IN ACCORDANCE WITH ECN	EFFECTIVE DATE	REVISED BY	DATE
DRW BY:	JDW	DRAWING STATUS: Released		
DATE:	03/13/13	PRODUCTION APPROVED FOR RELEASED STATUS ONLY		

FORM FEG035_PL_ASIZE, REV. A

SHEET 1 OF 1