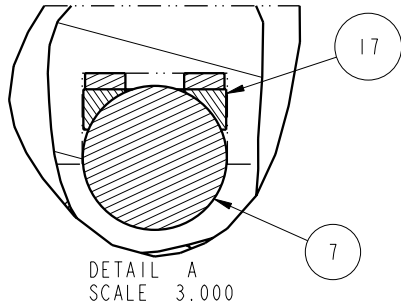
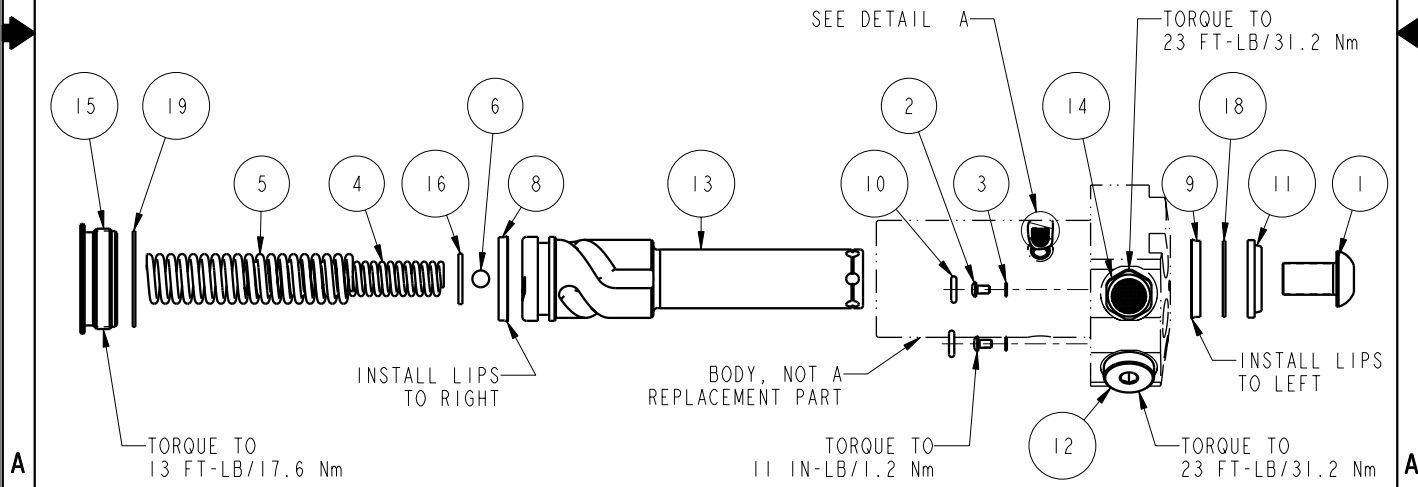


NO	QTY	PART NO	DESCRIPTION	STD SEAL KIT	FKM SEAL KIT	SPRING KIT
1	1	21500010	SCREW, CAP, BTNH, M12 X 20, ALY			
2	2	21500019	SCREW, CAP, BTNH, M3 X 6, ALY			
3	2	21500200	WASHER			
4	1	23313009	SPRING, COMPRESSION			X
5	1	23313010	SPRING, COMPRESSION			X
6	1	23600002	BALL, STEEL, ALLOY, .250			X
7	3	23650004	BALL, TUNGSTEN-CARBIDE .250	X	X	
8	1	39011027	SEAL, BEVEL, 1-1/16 x 3/32 x 1-1/4	X	39052012	
9	1	39011046	SEAL, BEVEL W/HEEL INSERT, 7/8 x 1/8 x 1-1/4	X	39V11046	
10	2	39051076	O-RING, (6mm x 2)	X	39V51076	X
11	1	39053000	WIPER, SNAP-IN, (7/8)	X	X	
12	1	43068006	PLUG, PORT, HOLLOW HEX, G1/4			
13	1	47511304	PLUNGER, SC, HS, 11.6KN, RH			
14	1	49001905	BREATHER, 1/4 BSPP			
15	1	81400030	RETAINER, SC, HS, 2600			
16	1	81591301	DISK, PIVOT, BALL, SC, 2600, SA			X
17	3	90199958	ASSY, BALLSEAT, SC, 2600/5000	X	X	
18	1	39F54002	BU RING, (-212 CUSTOM)	X	X	
19	1	39T55003	GASKET, (-124)	X	X	X
N/A	N/A	60414303	KIT, SEAL, STANDARD			
N/A	N/A	6V414303	KIT, SEAL, FKM			
N/A	N/A	61414003	KIT, SPRING			



PARTS LIST	
	VEKTEK, INC. 1334 E. SIXTH AVE. P.O. BOX 625 EMPORIA, KS. 66801 U.S.A.
ASSEMBLIES AFFECTED 41461111	PARTS LIST, ASSY, SC, TF, TC, 11.6KN, SA, RH
DATE: 03/13/13	SIZE A MPL1415 REV C

C	2635	RELEASE	KR	03/26/14
REV	IN ACCORDANCE WITH ECN	EFFECTIVE DATE	REVISED BY	DATE
DRW BY: JDW	DRAWING STATUS: Released			
PRODUCTION APPROVED FOR RELEASED STATUS ONLY				