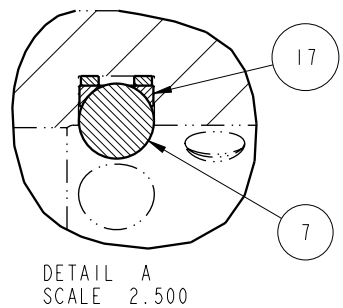
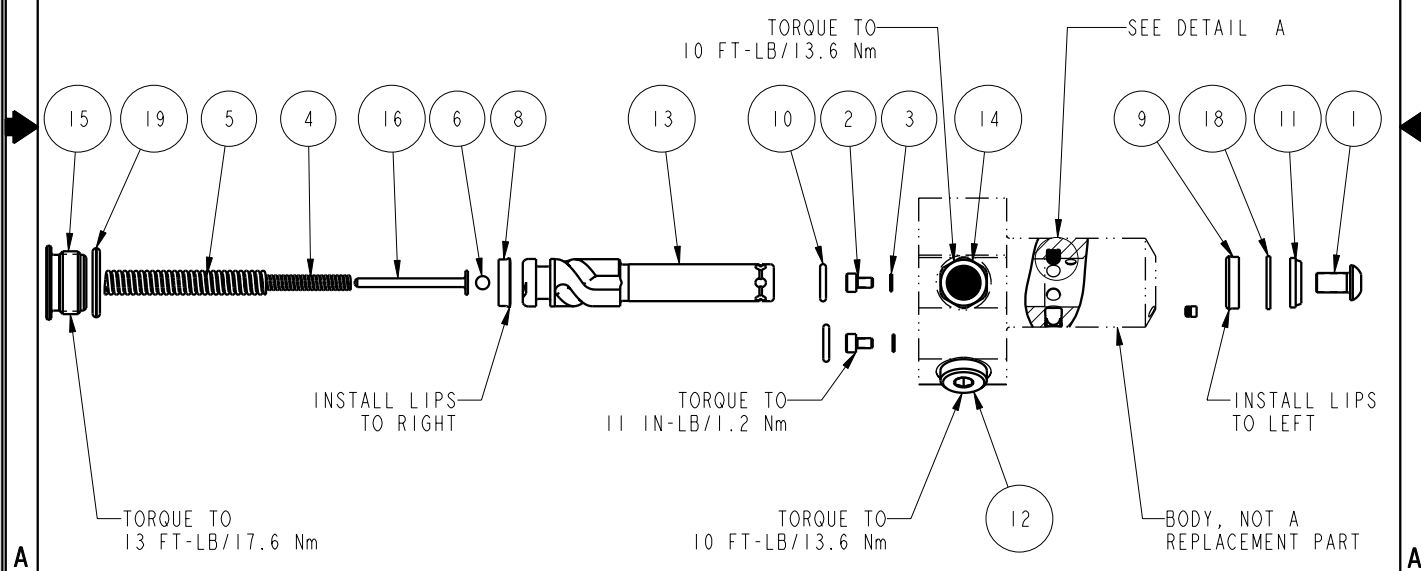


NO	QTY	PART NO	DESCRIPTION	STD SEAL KIT	FKM SEAL KIT	SPRING KIT
1	1	21500008	SCREW, CAP, BTNH, M6 X 10, ALY			
2	2	21500018	SCREW, CAP, SOCH, M3 X 5, ALY			
3	2	21500200	WASHER, .124x.207x.024,COPPER			
4	1	23310008	Spring, .175x.031x2.43x1.308,10.6			X
5	1	23311017	Spring, .283x.045x2.69x1.314,15.2			X
6	1	23600014	BALL, STEEL, ALLOY, .156			X
7	3	23650002	BALL,TUNGSTEN-CARBIDE.156	X	X	
8	1	39010036	SEAL,BEV,3/8x3/32x9/16,85 AU	X	39052010	
9	1	39010038	SEAL,BEV,7/16x3/32x5/8,85 HNBR	X	39052014	
10	2	39050042	O-RING,(-011),.301x.070,90 AUD	X	39051025	X
11	1	39053004	WIPER,SNAP-IN,(7/16), 70 FKM	X	X	
12	1	43068004	PLUG, SOCH, G1/8			
13	1	47510504	PLUNGER, SC, HS, 2KN, RH			
14	1	49001904	BREATHER, 1/8 BSPP			
15	1	81400028	RETAINER, SC, HS, 450			
16	1	81590501	ROD, SUPPORT, SPRING, SC, 450			X
17	3	90199956	ASSY,BALLSEAT,SC,450	X	X	
18	1	39F54000	BU RING,(-111),HYTREL	X	X	
19	1	39V00036	O-RING,(-908),.644x.087.90 FKM	X	X	X
N/A	N/A	60414301	KIT, SEAL, STANDARD			
N/A	N/A	6V414301	KIT, SEAL, FKM			
N/A	N/A	61414001	KIT, SPRING			



<b>PARTS LIST</b>	
	VEKTEK, INC. 1334 E. SIXTH AVE. P.O. BOX 625 EMPORIA, KS. 66801 U.S.A.
ASSEMBLIES AFFECTED 41420211	PARTS LIST, ASSY, SC, BF, TC, 2KN, SA, RH
SIZE A	MPL1423
REV B	

B	2583	RELEASE	K. ROEMER	10/29/13
REV	IN ACCORDANCE WITH ECN	EFFECTIVE DATE	REVISED BY	DATE
DRW BY: JDW	<b>DRAWING STATUS: Released</b>			
DATE: 03/21/13	PRODUCTION APPROVED FOR RELEASED STATUS ONLY			