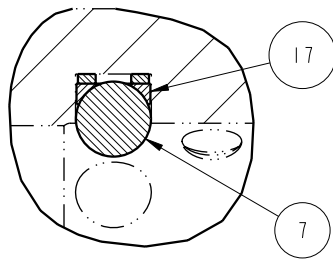
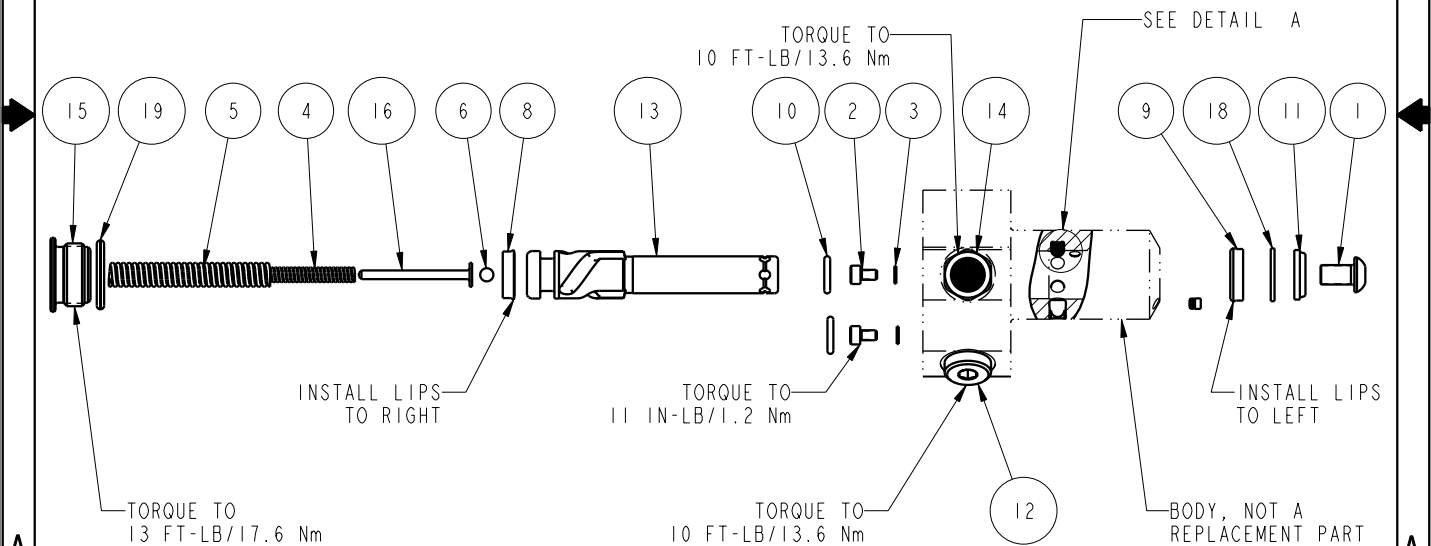



NO	QTY	PART NO	DESCRIPTION	STD SEAL KIT	FKM SEAL KIT	SPRING KIT
1	1	21500008	SCREW, CAP, BTNH, M6 X 10, ALY			
2	2	21500018	SCREW, CAP, SOCH, M3 X 5, ALY			
3	2	21500200	WASHER, .124x.207x.024,COPPER			
4	1	23310008	Spring, .175x.031x2.43x1.308,10.6			X
5	1	23311017	Spring, .283x.045x2.69x1.314,15.2			X
6	1	23600014	BALL, STEEL, ALLOY, .156			X
7	3	23650002	BALL, TUNGSTEN-CARBIDE .156	X	X	
8	1	39010036	SEAL, BEV, 3/8x3/32x9/16, 85 AU	X	39052010	
9	1	39010038	SEAL, BEV, 7/16x3/32x5/8, 85 HNBR	X	39052014	
10	2	39050042	O-RING, (-011), .301x.070, 90 AUD	X	39051025	X
11	1	39053004	WIPER, SNAP-IN, (7/16), 70 FKM	X	X	
12	1	43068004	PLUG, SOCH, G1/8			
13	1	47510503	PLUNGER, SC, HS, 2KN, LH			
14	1	49001904	BREATHER, 1/8 BSPP			
15	1	81400028	RETAINER, SC, HS, 450			
16	1	81590501	ROD, SUPPORT, SPRING, SC, 450			X
17	3	90199956	ASSY, BALLSEAT, SC, 450	X	X	
18	1	39F54000	BU RING, (-111), HYTREL	X	X	
19	1	39V00036	O-RING, (-908), .644x.087.90 FKM	X	X	X
N/A	N/A	60414301	KIT, SEAL, STANDARD			
N/A	N/A	6V414301	KIT, SEAL, FKM			
N/A	N/A	61414001	KIT, SPRING			



PARTS LIST	 VEKTEK VEKTEK, INC. 1334 E. SIXTH AVE. P.O. BOX 625 EMPORIA, KS. 66801 U.S.A.
	ASSEMBLIES AFFECTED 41420212
PARTS LIST, ASSY, SC, BF, TC, 2KN, SA, LH SIZE A MPL1424	REV B SHEET 1 OF 1

B	2583	RELEASE	K. ROEMER	10/29/13
REV	IN ACCORDANCE WITH ECN	EFFECTIVE DATE	REVISED BY	DATE
DRW BY:	JDW	DRAWING STATUS: Released PRODUCTION APPROVED FOR RELEASED STATUS ONLY		
DATE:	03/21/13			