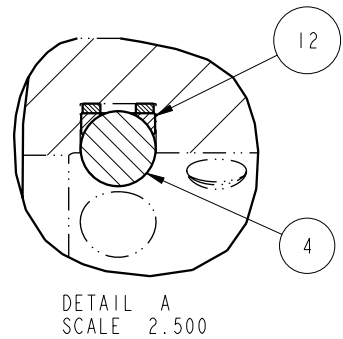
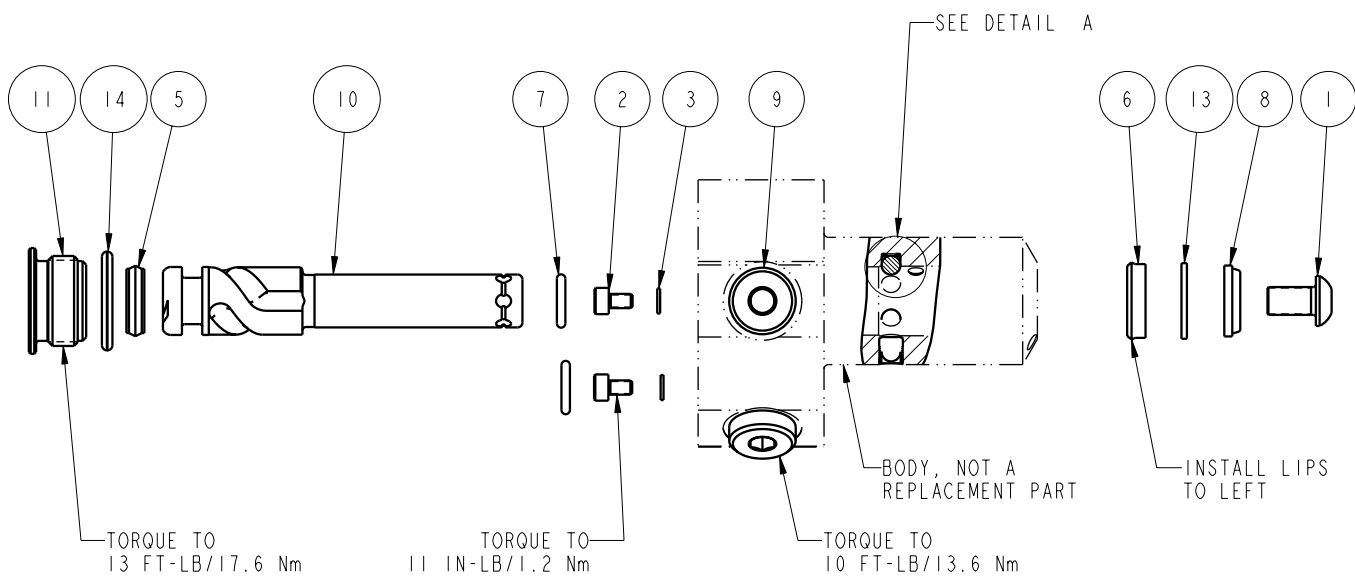



NO	QTY	PART NO	DESCRIPTION	STD SEAL KIT	FKM SEAL KIT
1	1	21500008	SCREW, CAP, BTNH, M6 X 10, ALY		
2	2	21500018	SCREW, CAP, SOCH, M3 X 5, ALY		
3	2	21500200	WASHER, .124x.207x.024,COPPER		
4	3	23650002	BALL,TUNGSTEN-CARBIDE .156	X	X
5	1	39010037	SEAL,CROWN,3/8x9/16x5/32,90AU	X	39V10037
6	1	39010038	SEAL,BEV,7/16x3/32x5/8,85 HNBR	X	39052014
7	2	39050042	O-RING,(-011),.301x.070,90 AUD	X	39051025
8	1	39053004	WIPER,SNAP-IN, (7/16), 70 FKM	X	X
9	2	43068004	PLUG, SOCH, G1/8		
10	1	47510504	PLUNGER, SC, HS, 2KN, RH		
11	1	81400028	RETAINER, SC, HS, 450		
12	3	90199956	ASSY,BALLSEAT,SC,450	X	X
13	1	39F54000	BU RING,(-111),HYTREL	X	X
14	1	39V00036	O-RING,(-908),.644x.087.90 FKM	X	X
N/A	N/A	60414501	KIT, SEAL, STANDARD		
N/A	N/A	6V414501	KIT, SEAL, FKM		



PARTS LIST	 VEKTEK, INC. 1334 E. SIXTH AVE. P.O. BOX 625 EMPORIA, KS. 66801 U.S.A.
	ASSEMBLIES AFFECTED 41420221
PARTS LIST, ASSY, SC, BF, TC, 2KN, DA, RH SIZE A MPL1426	REV B SHEET 1 OF 1

B	2583	RELEASE	K. ROEMER	10/29/13
REV	IN ACCORDANCE WITH ECN	EFFECTIVE DATE	REVISED BY	DATE
DRW BY:	JDW	DRAWING STATUS: Released		
DATE:	03/21/13	PRODUCTION APPROVED FOR RELEASED STATUS ONLY		