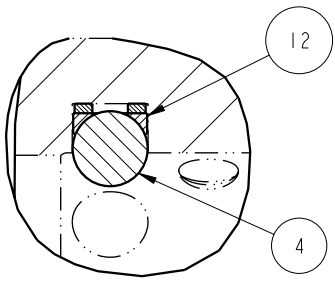
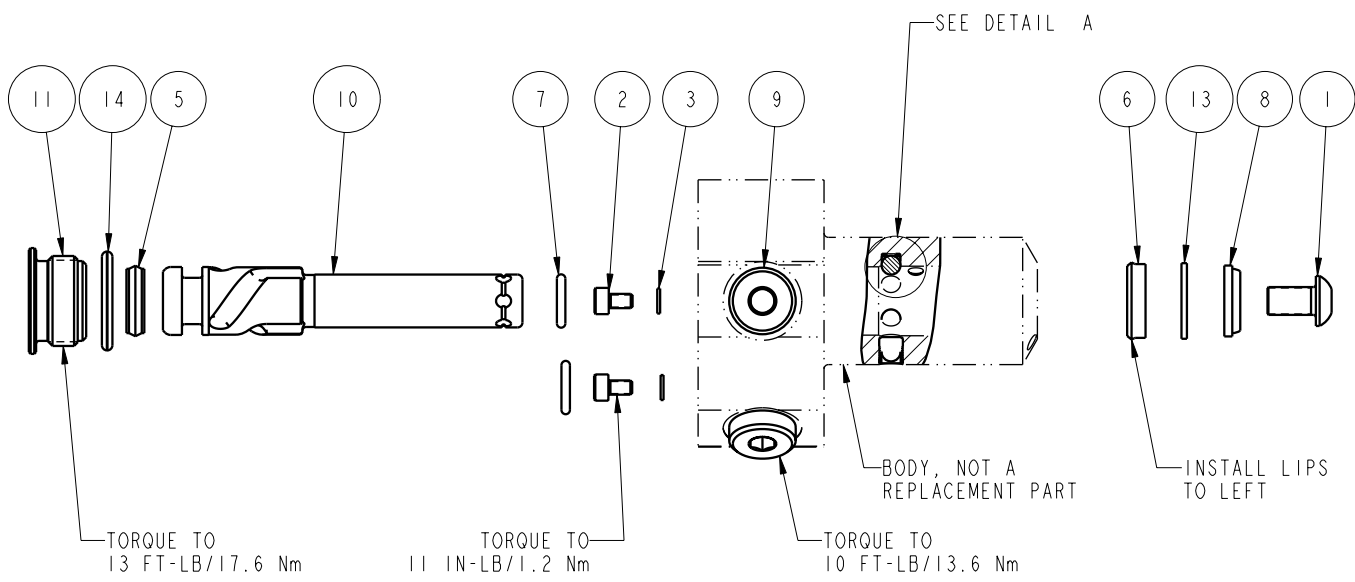


NO	QTY	PART NO	DESCRIPTION	STD SEAL KIT	FKM SEAL KIT
1	1	2150008	SCREW, CAP, BTNH, M6 X 10, ALY		
2	2	2150018	SCREW, CAP, SOCH, M3 X 5, ALY		
3	2	21500200	WASHER, .124x.207x.024,COPPER		
4	3	23650002	BALL,TUNGSTEN-CARBIDE .156	X	X
5	1	39010037	SEAL,CROWN,3/8x9/16x5/32,90AU	X	39V10037
6	1	39010038	SEAL,BEV,7/16x3/32x5/8,85 HNBR	X	39052014
7	2	39050042	O-RING,(-011),.301x.070,90 AUD	X	39051025
8	1	39053004	WIPER,SNAP-IN, (7/16), 70 FKM	X	X
9	2	43068004	PLUG, SOCH, G1/8		
10	1	47510503	PLUNGER, SC, HS, 2KN, LH		
11	1	81400028	RETAINER, SC, HS, 450		
12	3	90199956	ASSY,BALLSEAT,SC,450	X	X
13	1	39F54000	BU RING,(-111),HYTREL	X	X
14	1	39V00036	O-RING,(-908),.644x.087.90 FKM	X	X
N/A	N/A	60414501	KIT, SEAL, STANDARD		
N/A	N/A	6V414501	KIT, SEAL, FKM		



DETAIL A
SCALE 2.500

PARTS LIST	
	VEKTEK, INC. 1334 E. SIXTH AVE. P.O. BOX 625 EMPORIA, KS. 66801 U.S.A.
ASSEMBLIES AFFECTED 41420222	PARTS LIST, ASSY, SC, BF, TC, 2KN, DA, LH
SIZE A	MPL1427
	REV B

B	2583	RELEASE	K. ROEMER	10/29/13
REV	IN ACCORDANCE WITH ECN	EFFECTIVE DATE	REVISED BY	DATE
DRW BY:	JDW	DRAWING STATUS: Released PRODUCTION APPROVED FOR RELEASED STATUS ONLY		
DATE:	03/21/13			

SHEET 1 OF 1