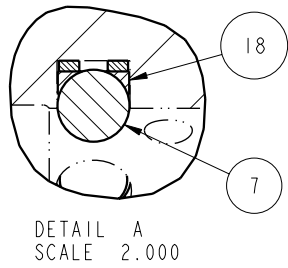
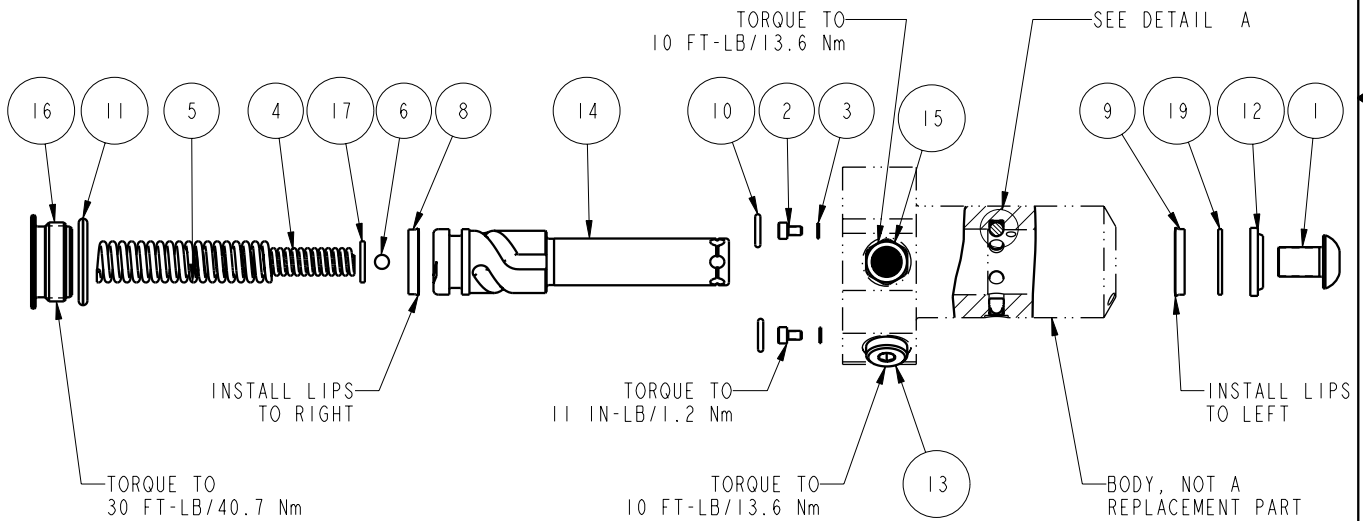



NO	QTY	PART NO	DESCRIPTION	STD SEAL KIT	FKM SEAL KIT	SPRING KIT
1	1	21500009	SCREW, CAP, BTNH, M10 X 16, ALY			
2	2	21500018	SCREW, CAP, SOCH, M3 X 5, ALY			
3	2	21500200	WASHER, .124x.207x.024,COPPER			
4	1	23311013	Spring, .370x.060x2.91x1.53,25.5			X
5	1	23313008	Spring, .550x.08x3.28x1.472,33			X
6	1	23600011	BALL, STEEL, ALLOY, .187			X
7	3	23650003	BALL, TUNGSTEN-CARBIDE.188	X	X	
8	1	39010015	SEAL,BEV,11/16x3/32x7/8,85 AU	X	39052011	
9	1	39010020	SEAL,BEV,INSR,5/8x1/8x7/8,85 AU	X	39V10020	
10	2	39050042	O-RING,(-011),.301x.070,90 AUD	X	39051025	X
11	1	39051031	O-RING,(-912),.924x.116,95 FKM	X	X	X
12	1	39053001	WIPER,SNAP-IN, (5/8), 90 FKM	X	X	
13	1	43068004	PLUG, SOCH, G1/8			
14	1	47510904	PLUNGER, SC, HS, 4.9KN, RH			
15	1	49001904	BREATHER, 1/8 BSPP			
16	1	81400029	RETAINER, SC, HS, 1100			
17	1	81590901	DISK, PIVOT, BALL, SC, 1100, SA			X
18	3	90199957	ASSY,BALLSEAT,SC,1100	X	X	
19	1	39F54001	BU RING,(-208),HYTREL	X	X	
N/A	N/A	60414302	KIT, SEAL, STANDARD			
N/A	N/A	6V414302	KIT, SEAL, FKM			
N/A	N/A	61414002	KIT, SPRING			



PARTS LIST	 VEKTEK VEKTEK, INC. 1334 E. SIXTH AVE. P.O. BOX 625 EMPORIA, KS. 66801 U.S.A.
	ASSEMBLIES AFFECTED 41420511
PARTS LIST, ASSY, SC, BF, TC, 4.9KN, SA, RH	SIZE A MPL1429
REV B	SHEET 1 OF 1

B	2583	RELEASE	K. ROEMER	10/29/13
REV	IN ACCORDANCE WITH ECN	EFFECTIVE DATE	REVISED BY	DATE
DRW BY:	JDW	DRAWING STATUS: Released PRODUCTION APPROVED FOR RELEASED STATUS ONLY		
DATE:	03/21/13			