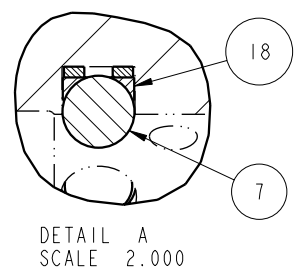
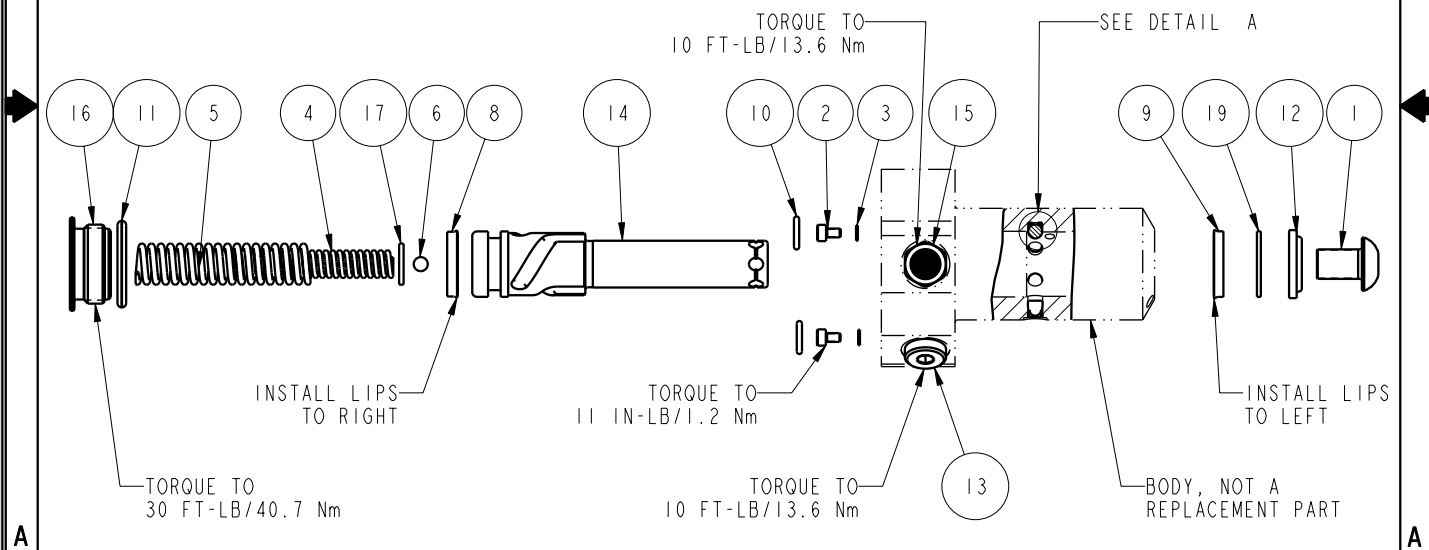


NO	QTY	PART NO	DESCRIPTION	STD SEAL KIT	FKM SEAL KIT	SPRING KIT
1	1	21500009	SCREW, CAP, BTNH, M10 X 16, ALY			
2	2	21500018	SCREW, CAP, SOCH, M3 X 5, ALY			
3	2	21500200	WASHER, .124x.207x.024,COPPER			
4	1	23311013	Spring, .370x.060x2.91x1.53,25.5			X
5	1	23313008	Spring, .550x.08x3.28x1.472,33			X
6	1	23600011	BALL, STEEL, ALLOY, .187			X
7	3	23650003	BALL,TUNGSTEN-CARBIDE.188	X	X	
8	1	39010015	SEAL,BEV,11/16x3/32x7/8,85 AU	X	39052011	
9	1	39010020	SEAL,BEV,INSR,5/8x1/8x7/8,85 AU	X	39V10020	
10	2	39050042	O-RING,(-011),.301x.070,90 AUD	X	39051025	X
11	1	39051031	O-RING,(-912),.924x.116,95 FKM	X	X	X
12	1	39053001	WIPER,SNAP-IN, (5/8), 90 FKM	X	X	
13	1	43068004	PLUG, SOCH, G1/8			
14	1	47510903	PLUNGER, SC, HS, 4.9KN, LH			
15	1	49001904	BREATHER, 1/8 BSPP			
16	1	81400029	RETAINER, SC, HS, 1100			
17	1	81590901	DISK, PIVOT, BALL, SC, 1100, SA			X
18	3	90199957	ASSY,BALLSEAT,SC,1100	X	X	
19	1	39F54001	BU RING,(-208),HYTREL	X	X	
N/A	N/A	60414302	KIT, SEAL, STANDARD			
N/A	N/A	6V414302	KIT, SEAL, FKM			
N/A	N/A	61414002	KIT, SPRING			



<b>PARTS LIST</b>	
	VEKTEK, INC. 1334 E. SIXTH AVE. P.O. BOX 625 EMPORIA, KS. 66801 U.S.A.
ASSEMBLIES AFFECTED 41420512	PARTS LIST, ASSY, SC, BF, TC, 4.9KN, SA, LH
SIZE A	MPL1430
	REV B

B	2583	RELEASE	K. ROEMER	10/29/13
REV	IN ACCORDANCE WITH ECN	EFFECTIVE DATE	REVISED BY	DATE
DRW BY:	JDW	<b>DRAWING STATUS: Released</b> PRODUCTION APPROVED FOR RELEASED STATUS ONLY		
DATE:	03/21/13			

SHEET 1 OF 1