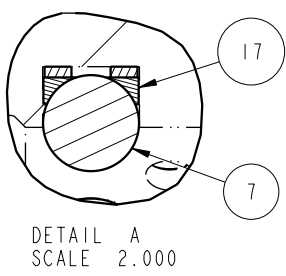
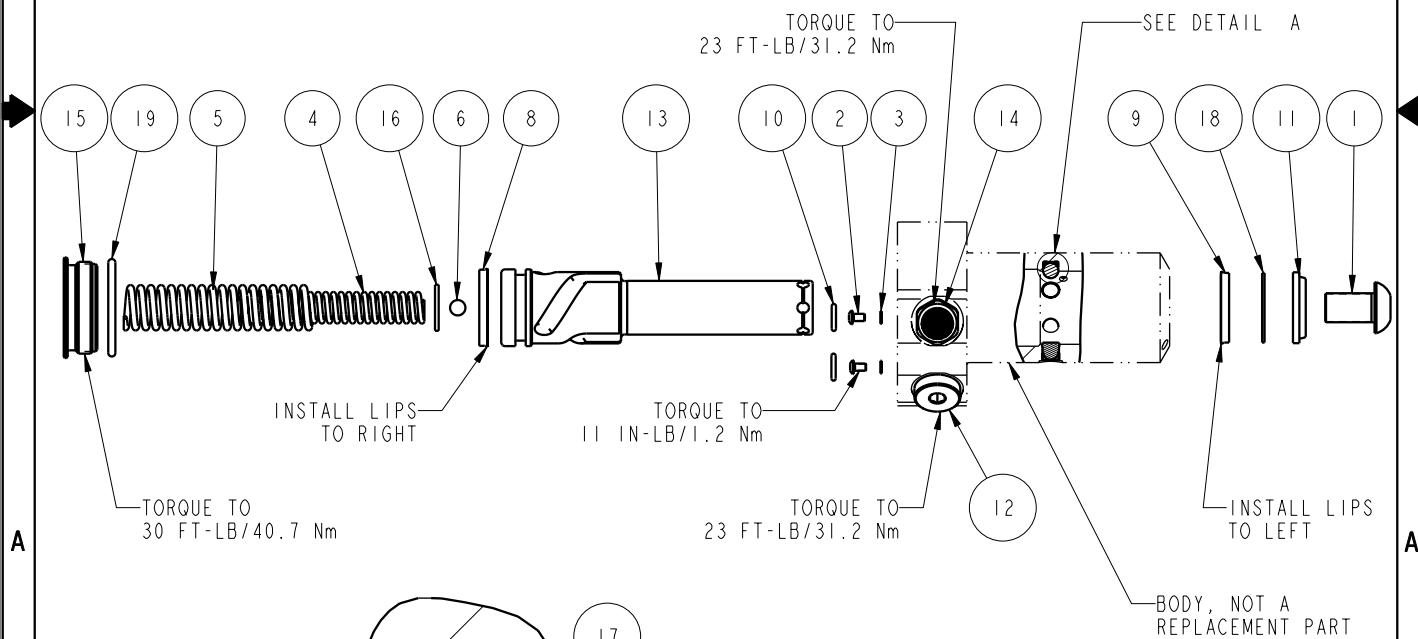


NO	QTY	PART NO	DESCRIPTION	STD SEAL KIT	FKM SEAL KIT	SPRING KIT
1	1	21500010	SCREW, CAP, BTNH, M12 X 20, ALY			
2	2	21500019	SCREW, CAP, BTNH, M3 X 6, ALY			
3	2	21500200	WASHER			
4	1	23313009	SPRING, COMPRESSION			X
5	1	23313010	SPRING, COMPRESSION			X
6	1	23600002	BALL, STEEL, ALLOY, .250			X
7	3	23650004	BALL, TUNGSTEN-CARBIDE .250	X	X	
8	1	39011027	SEAL, BEVEL, 1-1/16 x 3/32 x 1-1/4	X	39052012	
9	1	39011046	SEAL, BEVEL W/HEEL INSERT, 7/8 x 1/8 x 1-1/4	X	39052003	
10	2	39050042	O-RING, (-011)	X	39051025	X
11	1	39053000	WIPER, SNAP-IN, (7/8)	X	X	
12	1	43068006	PLUG, PORT, HOLLOW HEX, G1/4			
13	1	47511303	PLUNGER, SC, HS, 11.6KN, LH			
14	1	49001905	BREATHER, 1/4 BSPP			
15	1	81400030	RETAINER, SC, HS, 2600			
16	1	81591301	DISK, PIVOT, BALL, SC, 2600, SA			X
17	3	90199958	ASSY, BALLSEAT, SC, 2600/5000	X	X	
18	1	39F54002	BU RING, (-212 CUSTOM)	X	X	
19	1	39V51043	O-RING, (-918)	X	X	X
N/A	N/A	60414304	KIT, SEAL, STANDARD			
N/A	N/A	6V414304	KIT, SEAL, FKM			
N/A	N/A	61414004	KIT, SPRING			



<b>PARTS LIST</b>	
	VEKTEK, INC. 1334 E. SIXTH AVE. P.O. BOX 625 EMPORIA, KS. 66801 U.S.A.
ASSEMBLIES AFFECTED 41421112	PARTS LIST, ASSY, SC, BF, TC, 11.6KN, SA, LH
SIZE A	MPL1438
REV C	

C	2635	RELEASE	KR	03/26/14
REV	IN ACCORDANCE WITH ECN	EFFECTIVE DATE	REVISED BY	DATE
DRW BY:	JDW	<b>DRAWING STATUS: Released</b>		
DATE:	03/21/13	PRODUCTION APPROVED FOR RELEASED STATUS ONLY		

SHEET 1 OF 1