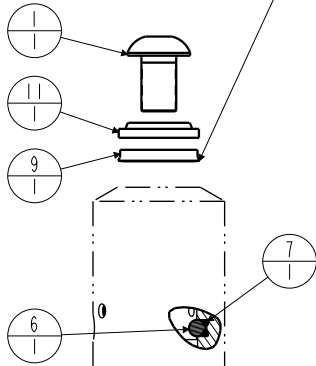


No.	QTY	PART No.	DESCRIPTION	Standard Seal Kit	FKM Seal Kit	Spring Kit
N/A	N/A	ISM1500	INSTALLATION SHEET	N/A	N/A	N/A
N/A	N/A	46100011	KIT, SPRING	N/A	N/A	NOTED
N/A	N/A	6V150107	KIT, SEAL, FKM	N/A	NOTED	N/A
N/A	N/A	46000018	KIT, SEAL, STANDARD	NOTED	N/A	N/A
17	1	39T55002	GASKET, (-021)	X	X	X
16	1	81590901	DISK, PIVOT, BALL, SC, 1100, SA			X
15	1	81530901	RETAINER, SC, 1100			
14	1	49001904	BREATHER, 1/8 BSPP			
13	1	47510900	PLUNGER, SC, 4.9 kN			
12	1	43068004	PLUG, SOCH, G1/8			
11	1	39053001	WIPER, SNAP-IN, (5/8)	X	X	
10	2	39050042	O-RING, (-011)	X	39051025	X
9	1	39010020	SEAL, BEVEL W/HHEEL INSERT, 5/8 x 1/8 x 7/8	X	39V10020	
8	1	39010015	SEAL, BEVEL, 11/16 x 3/32 x 7/8	X	39052011	
7	1	39000019	O-RING, (-003)	X	39051006	
6	2	23600011	BALL, STEEL, ALLOY, .187	X	X	X
5	1	23313008	SPRING, COMPRESSION			X
4	1	23311013	SPRING, COMPRESSION			X
3	2	21500200	WASHER			
2	2	21500018	SCREW, CAP, SOCH, M3 X 5, ALY			
1	1	21500009	SCREW, CAP, BTNH, M10 X 16, ALY			

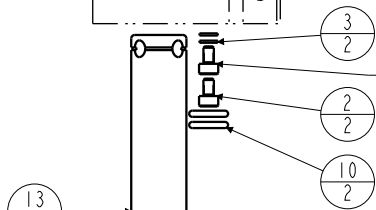
Assemble with lip side facing bottom of body



Body - Not Replaceable

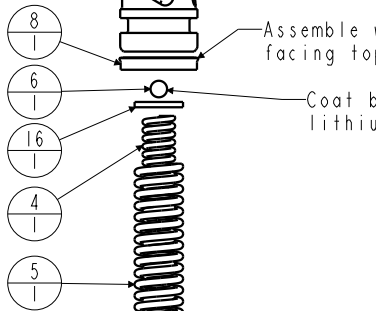
Lubricate all seals with clean hydraulic fluid prior to assembly.
Do Not Use Silicone Based Lubricants.

Tighten to 1.2 Nm (11 in-lbs) torque



Assemble with lip side facing top of plunger

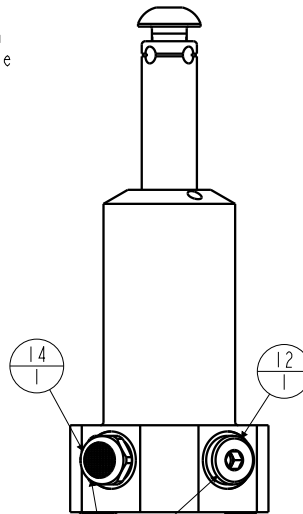
Coat ball with lithium grease



Tighten to 18 Nm (13 ft-lbs) torque



Tighten to 13.6 Nm (10 ft-lbs) torque



PARTS LIST



VEKTEK, INC.
1334 E. SIXTH AVE. P.O. BOX 625
EMPORIA, KS. 66801 U.S.A.

ASSEMBLIES AFFECTED

41520511
41520512
41520515

PARTS LIST, ASSY, SC, BF, 4.9KN, SA, Ver. saCam

SIZE
A

MPL1536

REV
L

SHEET 1 OF 1

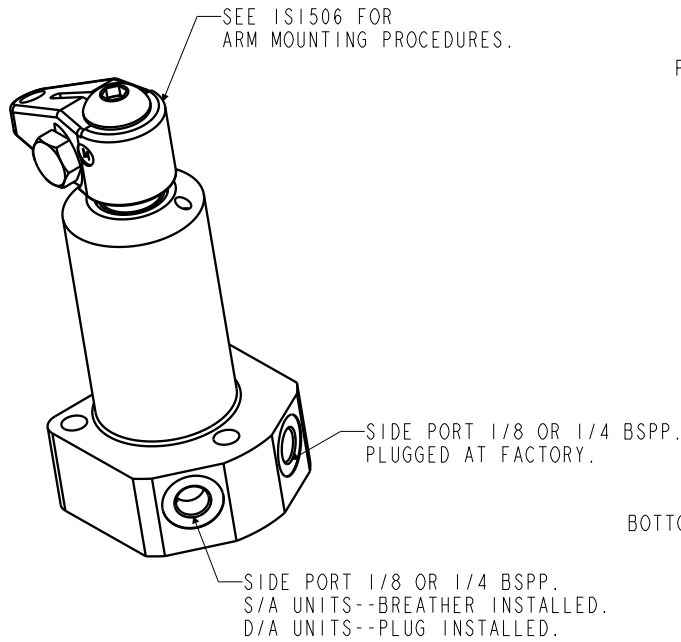
L	3957	RELEASE	JDW	10/24/19
REV	IN ACCORDANCE WITH ECN	EFFECTIVE DATE	REVISED BY	DATE
DRW BY:	COMBES	DRAWING STATUS: Released		
DATE:	04/06/99	PRODUCTION APPROVED FOR RELEASED STATUS ONLY		

1

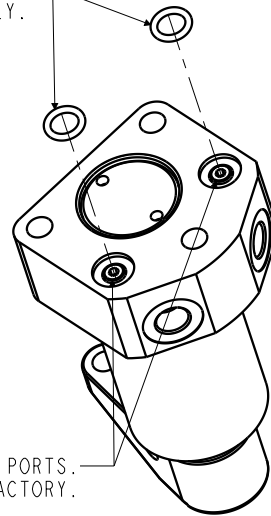
2

B

B



TWO MANIFOLD MOUNT O-RINGS PROVIDED WITH THE ASSEMBLY.



PLUMBING CONNECTIONS:
 SIDE PORTS--REMOVE PLUG(S) AND INSTALL PROPER FITTING.
 BOTTOM O-RING MANIFOLD MOUNT PORTS--REMOVE PLUG(S). INSERT O-RING(S)
 AND MOUNT TO THE MANIFOLD MOUNTING SURFACE.
 MANIFOLD MOUNTING SURFACE TO BE FLAT WITHIN .08 mm WITH A MAXIMUM SURFACE FINISH OF 2 μ m R_a.

A

A

INSTALLATION INSTRUCTIONS



VEKTEK, INC.
 1334 E. SIXTH AVE. P.O. BOX 625
 EMPORIA, KS. 66801 U.S.A.

ASSEMBLIES AFFECTED
 ALL METRIC
 FLANGE MOUNTED
 SWING CLAMPS

INSTALLATION INSTRUCTIONS, SC, BF, METRIC

SIZE A
ISMI500

REV C

FORM FEG041-IS.AS1ZE, REV. B

C	3958	RELEASE	JDW	10/31/19
REV	IN ACCORDANCE WITH ECN	EFFECTIVE DATE	REVISED BY	DATE
DRW BY:	BUSH	DRAWING STATUS: Released		
DATE:	01/02/94	PRODUCTION APPROVED FOR RELEASED STATUS ONLY		

1

2

SHEET 1 OF 1