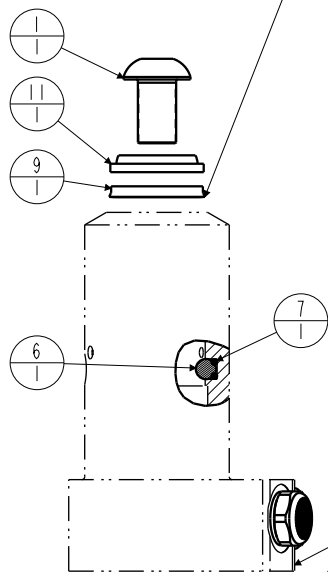


No.	QTY	PART No.	DESCRIPTION	Standard Seal Kit	FKM Seal Kit	Spring Kit
N/A	N/A	ISMI500	INSTALLATION SHEET	N/A	N/A	N/A
N/A	N/A	46100012	KIT, SPRING	N/A	N/A	NOTED
N/A	N/A	6V415601	KIT, SEAL, FKM	N/A	NOTED	N/A
N/A	N/A	60150300	KIT, SEAL, STANDARD	NOTED	N/A	N/A
17	1	39T55003	GASKET, (-124)	X	X	X
16	1	81591301	DISK, PIVOT, BALL, SC, 2600, SA			X
15	1	81531301	RETAINER, SC, 2600			
14	1	49001905	BREATHER, 1/4 BSPP			
13	1	47511300	PLUNGER, SC, 11.6 kN			
12	1	43068006	PLUG, PORT, HOLLOW HEX, G1/4			
11	1	39053000	WIPER, SNAP-IN, (7/8)	X	X	
10	2	39050042	O-RING, (-011)	X	30051025	X
9	1	39011046	SEAL, BEVEL W/HEEL INSERT, 7/8 x 1/8 x 1-1/4	X	39052003	
8	1	39011027	SEAL, BEVEL, 1-1/16 x 3/32 x 1-1/4	X	39052012	
7	1	39000020	O-RING, (-005)	X	3905107	
6	2	23600002	BALL, STEEL, ALLOY, .250	X	X	X
5	1	23313010	SPRING, COMPRESSION			X
4	1	23313009	SPRING, COMPRESSION			X
3	2	21500200	WASHER			
2	2	21500019	SCREW, CAP, BTNH, M3 X 6, ALY			
1	1	21500010	SCREW, CAP, BTNH, M12 X 20, ALY			

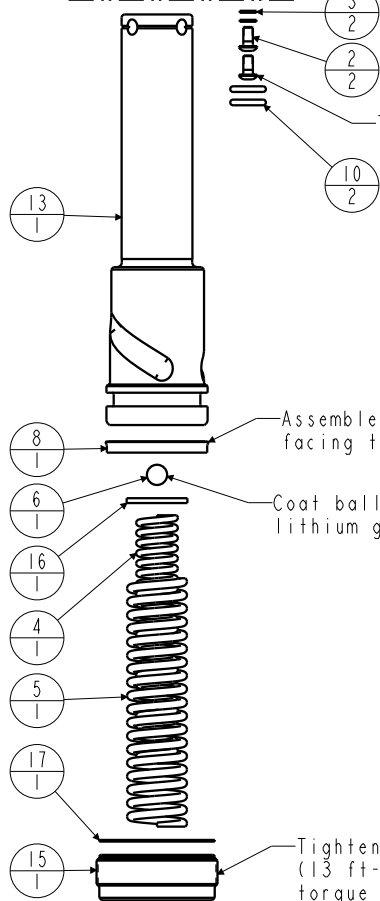
Assemble with lip side facing bottom of body



Body- Not Replaceable

Lubricate all seals with clean hydraulic fluid prior to assembly. Do Not Use Silicone Based Lubricants.

Tighten to 1.2 Nm (11 in-lbs) torque



Assemble with lip side facing top of plunger

Coat ball with lithium grease

Tighten to 31.2 Nm (23 ft-lbs) torque

Tighten to 17.6 Nm (13 ft-lbs) torque

### PARTS LIST



VEKTEK, INC.  
1334 E. SIXTH AVE. P.O. BOX 625  
EMPORIA, KS. 66801 U.S.A.

#### ASSEMBLIES AFFECTED

41521111  
41521112  
41521115

PARTS LIST, ASSY, SC, BF, 11.6KN, SA, VersaCam

SIZE  
A

MPL1537

REV  
M

SHEET 1 OF 1

FORM FEG035\_PL\_ASIZE, REV. B

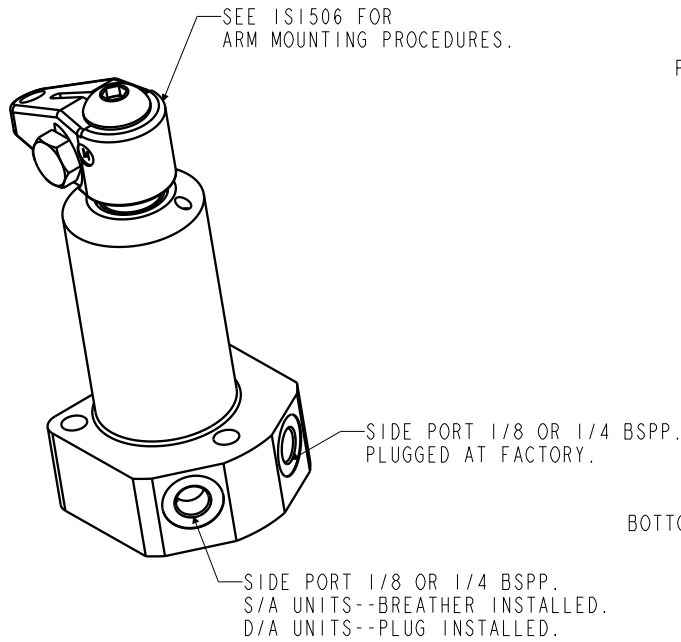
M	3957	RELEASE	JDW	10/24/19
REV	IN ACCORDANCE WITH ECN	EFFECTIVE DATE	REVISED BY	DATE
DRW BY:	COMBES	<b>DRAWING STATUS: Released</b>		
DATE:	04/06/99	PRODUCTION APPROVED FOR RELEASED STATUS ONLY		

1

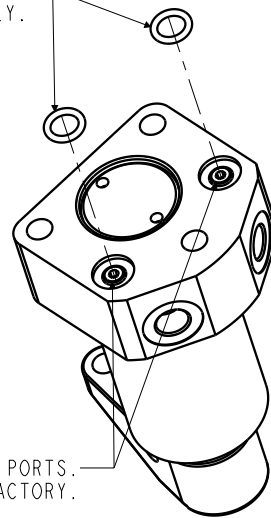
2

B

B



TWO MANIFOLD MOUNT O-RINGS PROVIDED WITH THE ASSEMBLY.



BOTTOM O-RING MANIFOLD MOUNT PORTS. ALL PORTS PLUGGED AT FACTORY.

PLUMBING CONNECTIONS:  
 SIDE PORTS--REMOVE PLUG(S) AND INSTALL PROPER FITTING.  
 BOTTOM O-RING MANIFOLD MOUNT PORTS--REMOVE PLUG(S). INSERT O-RING(S)  
 AND MOUNT TO THE MANIFOLD MOUNTING SURFACE.  
 MANIFOLD MOUNTING SURFACE TO BE FLAT WITHIN .08 mm WITH A MAXIMUM SURFACE FINISH OF 2  $\mu\text{m}$  R<sub>a</sub>.

A

A

### INSTALLATION INSTRUCTIONS



VEKTEK, INC.  
 1334 E. SIXTH AVE. P.O. BOX 625  
 EMPORIA, KS. 66801 U.S.A.

ASSEMBLIES AFFECTED  
 ALL METRIC  
 FLANGE MOUNTED  
 SWING CLAMPS

INSTALLATION INSTRUCTIONS, SC, BF, METRIC

SIZE  
 A ISM1500

REV C

FORM FEG041-IS-ASIZE, REV. B

C	3958	RELEASE	JDW	10/31/19
REV	IN ACCORDANCE WITH ECN	EFFECTIVE DATE	REVISED BY	DATE
DRW BY:	BUSH	<b>DRAWING STATUS: Released</b>		
DATE:	01/02/94	PRODUCTION APPROVED FOR RELEASED STATUS ONLY		

1

2

SHEET 1 OF 1