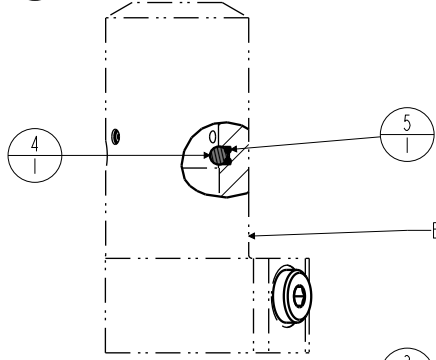
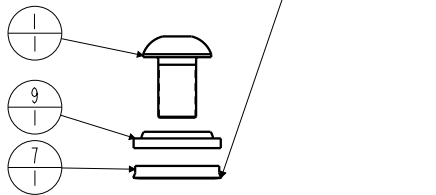


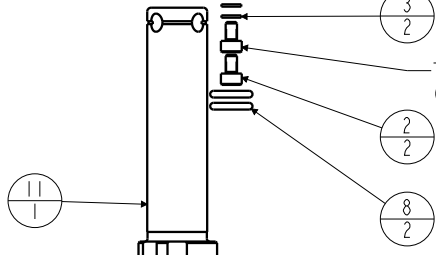
| N/A | N/A | ISM1500 | INSTALLATION SHEET | N/A | N/A |
|-----|-----|----------|--|-------------------|--------------|
| N/A | N/A | 6V150207 | KIT, SEAL, FKM | N/A | NOTED |
| N/A | N/A | 60150501 | KIT, SEAL, STANDARD | NOTED | N/A |
| 13 | 1 | 39T55002 | GASKET, (-021) | X | X |
| 12 | 1 | 81530901 | RETAINER, SC, 1100 | | |
| 11 | 1 | 47510900 | PLUNGER, SC, 4.9 kN | | |
| 10 | 2 | 43068004 | PLUG, SOCH, G1/8 | | |
| 9 | 1 | 39053001 | WIPER, SNAP-IN, (5/8) | X | X |
| 8 | 2 | 39050042 | O-RING, (-011) | X | 3951025 |
| 7 | 1 | 39010020 | SEAL, BEVEL W/HEEL INSERT, 5/8 x 1/8 x 7/8 | X | 39V10020 |
| 6 | 1 | 39010018 | SEAL, CROWN, 11/16 x 7/8 x 5/32 | X | 39V10018 |
| 5 | 1 | 39000019 | O-RING, (-003) | X | 39051006 |
| 4 | 1 | 23600011 | BALL, STEEL, ALLOY, .187 | X | X |
| 3 | 2 | 21500200 | WASHER | | |
| 2 | 2 | 21500018 | SCREW, CAP, SOCH, M3 X 5, ALY | | |
| 1 | 1 | 21500009 | SCREW, CAP, BTNH, M10 X 16, ALY | | |
| No. | QTY | PART No. | DESCRIPTION | Standard Seal Kit | FKM Seal Kit |

Assemble with lip side facing bottom of body



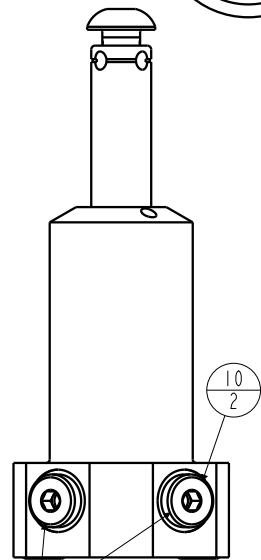
Body- Not Replaceable

Tighten to 1.2 Nm (11 in-lbs) torque




Tighten to 18 Nm (13 ft-lbs) torque

Lubricate all seals with clean hydraulic fluid prior to assembly.
Do Not Use Silicone Based Lubricants.



Tighten to 13.6 Nm (10 ft-lbs) torque

| | | |
|-------------------|--|--|
| PARTS LIST |  VEKTEK VEKTEK, INC. 1334 E. SIXTH AVE. P.O. BOX 625 EMPORIA, KS. 66801 U.S.A. | |
| | ASSEMBLIES AFFECTED | PARTS LIST, ASSY, SC, BF, 4.9KN, DA, Ver.s.cAm |
| | 41520521 41520522 41520525 | SIZE A MPL1539 REV K |

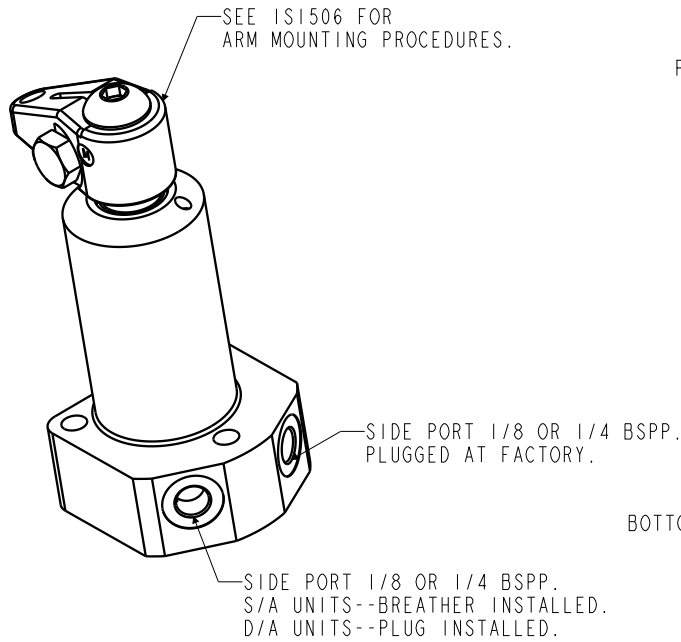
| | | | | |
|----------------|---|----------------|------------|----------|
| K | 3958 | RELEASE | JDW | 10/31/19 |
| REV | IN ACCORDANCE WITH ECN | EFFECTIVE DATE | REVISED BY | DATE |
| DRW BY: COMBES | DRAWING STATUS: Released PRODUCTION APPROVED FOR RELEASED STATUS ONLY | | | |
| DATE: 04/07/99 | | | | |

1

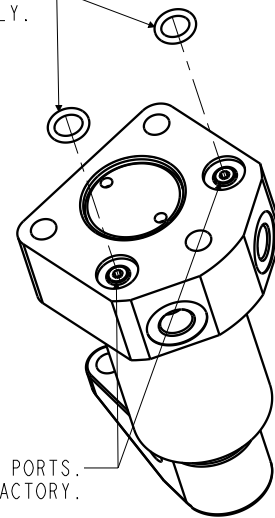
2

B

B



TWO MANIFOLD MOUNT O-RINGS PROVIDED WITH THE ASSEMBLY.



PLUMBING CONNECTIONS:
 SIDE PORTS--REMOVE PLUG(S) AND INSTALL PROPER FITTING.
 BOTTOM O-RING MANIFOLD MOUNT PORTS--REMOVE PLUG(S). INSERT O-RING(S) AND MOUNT TO THE MANIFOLD MOUNTING SURFACE.
 MANIFOLD MOUNTING SURFACE TO BE FLAT WITHIN .08 mm WITH A MAXIMUM SURFACE FINISH OF 2 μm R_a.

A

A

INSTALLATION INSTRUCTIONS



VEKTEK, INC.
 1334 E. SIXTH AVE. P.O. BOX 625
 EMPORIA, KS. 66801 U.S.A.

ASSEMBLIES AFFECTED
 ALL METRIC
 FLANGE MOUNTED
 SWING CLAMPS

INSTALLATION INSTRUCTIONS, SC, BF, METRIC

SIZE A
ISMI500

REV C

FORM FEG041-IS-ASIZE, REV. B

| | | | | |
|---------|------------------------|--|------------|----------|
| C | 3958 | RELEASE | JDW | 10/31/19 |
| REV | IN ACCORDANCE WITH ECN | EFFECTIVE DATE | REVISED BY | DATE |
| DRW BY: | BUSH | DRAWING STATUS: Released | | |
| DATE: | 01/02/94 | PRODUCTION APPROVED FOR RELEASED STATUS ONLY | | |

1

2

SHEET 1 OF 1