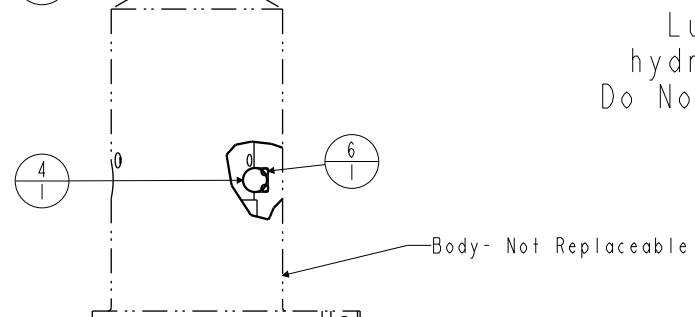
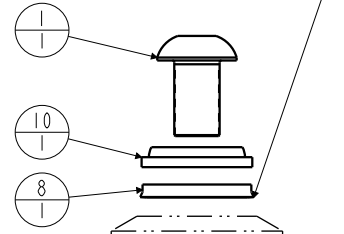
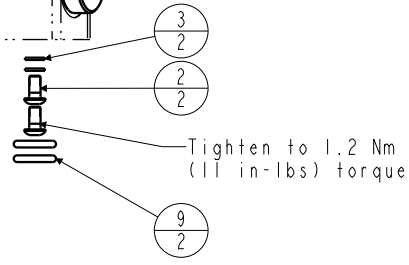


No.	QTY	PART No.	DESCRIPTION	Standard Seal Kit	FKM Seal Kit
N/A	N/A	SM1500	INSTALLATION SHEET	N/A	N/A
N/A	N/A	6V150214	KIT, SEAL, FKM	N/A	NOTED
N/A	N/A	60150500	KIT, SEAL, STANDARD	NOTED	N/A
14	1	39T55003	GASKET, (-124)	X	X
13	1	81531301	RETAINER, SC, 2600		
12	1	47511300	PLUNGER, SC, 11.6 kN		
11	2	43068006	PLUG, PORT, HOLLOW HEX, G1/4		
10	1	39053000	WIPER, SNAP-IN, (7/8)	X	X
9	2	39050042	O-RING, (-011)	X	39051025
8	1	39011046	SEAL, BEVEL W/HEEL INSERT, 7/8 x 1/8 x 1 1/8	X	39052003
7	1	39011030	SEAL, CROWN, 1-1/16x1-1/4x5/32	X	39V11030
6	1	39000020	O-RING, (-005)	X	39051007
5	1	27412009	PLUG, SEALING, 9/32, SHORT		
4	1	23600002	BALL, STEEL, ALLOY, .250	X	X
3	2	21500200	WASHER		
2	2	21500019	SCREW, CAP, BTNH, M3 X 6, ALY		
1	1	21500010	SCREW, CAP, BTNH, M12 X 20, ALY		

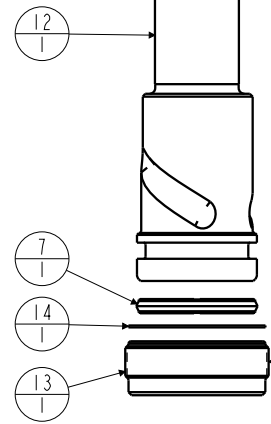
Assemble with lip side facing bottom of body



Body- Not Replaceable

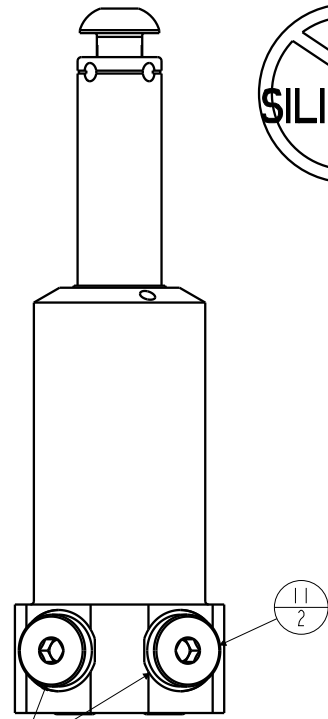


Tighten to 1.2 Nm (11 in-lbs) torque




Tighten to 18 Nm (13 ft-lbs) torque

Lubricate all seals with clean hydraulic fluid prior to assembly.
Do Not Use Silicone Based Lubricants.



Tighten to 31 Nm (23 ft-lbs) torque

PARTS LIST	 VEKTEK, INC. 1334 E. SIXTH AVE. P.O. BOX 625 EMPORIA, KS. 66801 U.S.A.	
	ASSEMBLIES AFFECTED	PARTS LIST, ASSY, SC, BF, 11.6KN, DA, VersaCam
	SIZE A	MPL1540

P	3958	RELEASE	JDW	10/31/19
REV	IN ACCORDANCE WITH ECN	EFFECTIVE DATE	REVISED BY	DATE
DRW BY:	COMBES	DRAWING STATUS: Released		
DATE:	04/07/99	PRODUCTION APPROVED FOR RELEASED STATUS ONLY		

SHEET 1 OF 1