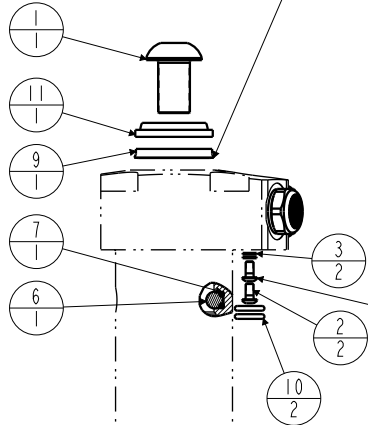


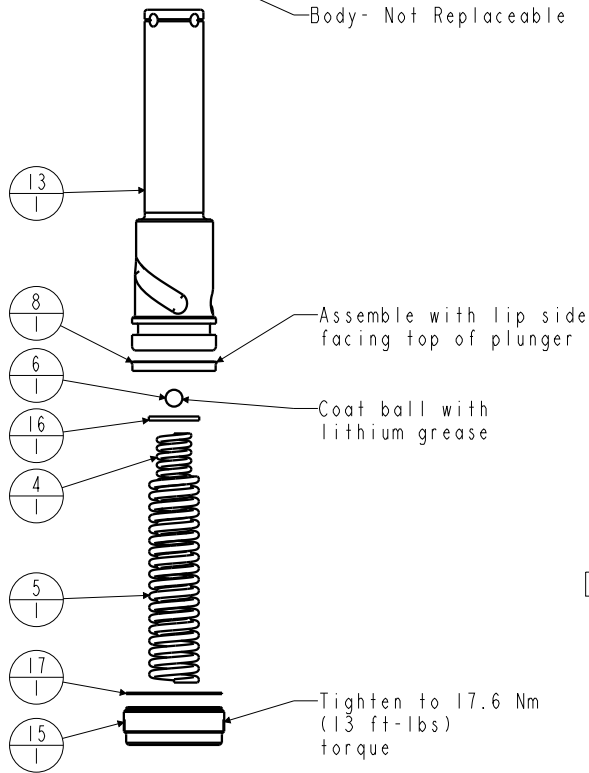
No.	QTY	PART No.	DESCRIPTION	Standard Seal Kit	FKM Seal Kit	Spring Kit
N/A	N/A	46100012	KIT, SPRING	N/A	N/A	NOTED
N/A	N/A	6V415601	KIT, SEAL, FKM	N/A	NOTED	N/A
N/A	N/A	60150300	KIT, SEAL, STANDARD	NOTED	N/A	N/A
17	1	39T55003	GASKET, (-124)	X	X	X
16	1	81591301	DISK, PIVOT, BALL, SC, 2600, SA			X
15	1	81531301	RETAINER, SC, 2600			
14	1	49001905	BREATHER, 1/4 BSPP			
13	1	47511300	PLUNGER, SC, 11.6 kN			
12	1	43068006	PLUG, 1/4 BSPP MALE			
11	1	39053000	WIPER, SNAP-IN, (7/8)	X	X	
10	2	39050042	O-RING, (-011)	X	39051025	X
9	1	39011046	SEAL, BEVEL W/WHEEL INSERT, 7/8 x 1/8 x 1-1/4	X	39052003	
8	1	39011027	SEAL, BEVEL, 1-1/16 x 3/32 x 1-1/4	X	39052012	
7	1	39000020	O-RING, (-005)	X	39051007	X
6	2	23600002	BALL, STEEL, ALLOY, .250	X	X	X
5	1	23313010	SPRING, COMPRESSION			X
4	1	23313009	SPRING, COMPRESSION			X
3	2	21500200	WASHER			
2	2	21500019	SCREW, CAP, BTNH, M3 X 6, ALY			
1	1	21500010	SCREW, CAP, BTNH, M12 X 20, ALY			

Assemble with lip side facing bottom of body

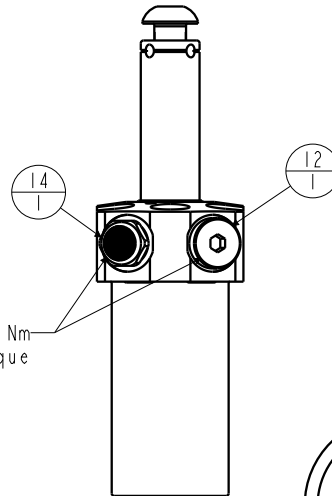


Tighten to 1.2 Nm (11 in-lbs) torque

Body - Not Replaceable



Tighten to 17.6 Nm (13 ft-lbs) torque



Tighten to 31.2 Nm (23 ft-lbs) torque



Lubricate all seals with clean hydraulic fluid prior to assembly. Do Not Use Silicone Based Lubricants.

PARTS LIST



VEKTEK, INC.
1334 E. SIXTH AVE. P.O. BOX 625
EMPORIA, KS. 66801 U.S.A.

ASSEMBLIES AFFECTED

41561111
41561112
41561115

PARTS LIST, ASSY, SC, TF, 11.6KN, SA, VersaCam

SIZE
A

MPL1557

REV
K

SHEET 1 OF 1

FORM FEG035_PL_ASIZE, REV. B

K	3924	RELEASE	JDW	09/20/19
REV	IN ACCORDANCE WITH ECN	EFFECTIVE DATE	REVISED BY	DATE
DRW BY:	COMBES	DRAWING STATUS: Released		
DATE:	03/16/99	PRODUCTION APPROVED FOR RELEASED STATUS ONLY		