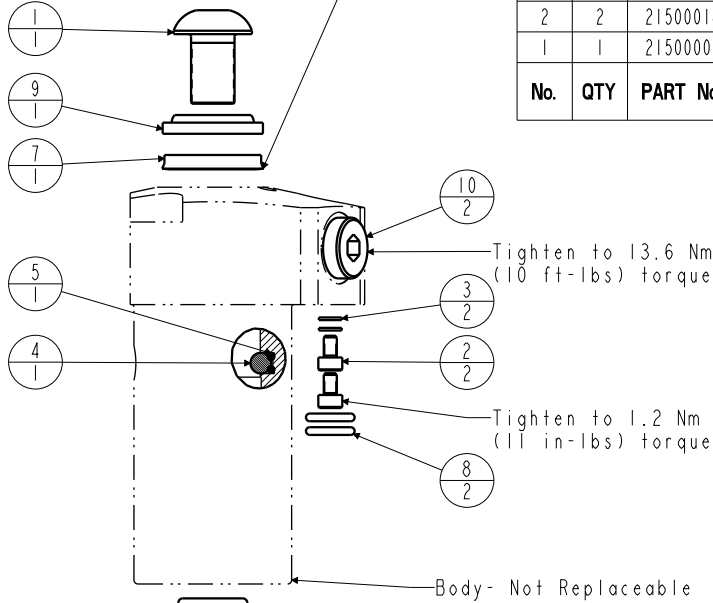
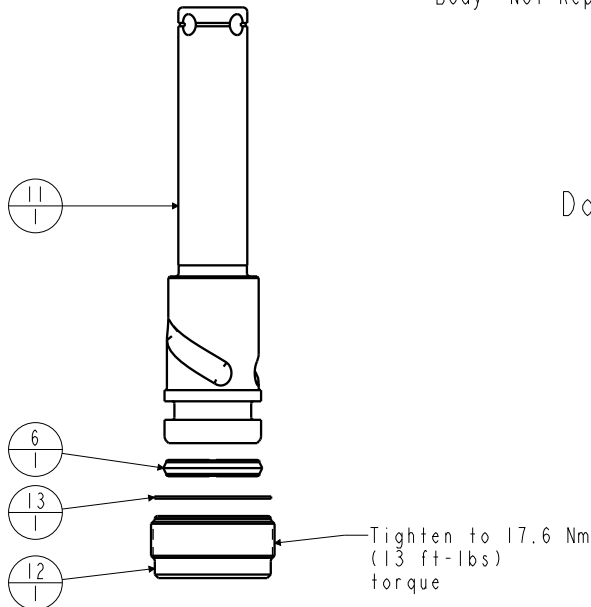



No.	QTY	PART No.	DESCRIPTION	Standard Seal Kit	FKM Seal Kit
N/A	N/A	6V150207	KIT, SEAL, FKM	N/A	NOTED
N/A	N/A	60150501	KIT, SEAL, STANDARD	NOTED	N/A
13	1	39T55002	GASKET, (-021)	X	X
12	1	81530901	RETAINER, SC, 1100		
11	1	47510900	PLUNGER, SC, 4.9 kN		
10	2	43068004	PLUG, 1/8 BSPP		
9	1	39053001	WIPER, SNAP-IN, (5/8)	X	X
8	2	39050042	O-RING, (-011)	X	39051025
7	1	39010020	SEAL, BEVEL W/HEEL INSERT, 5/8 x 1/8 x 7/8	X	39V10020
6	1	39010018	SEAL, CROWN, 11/16x7/8x5/32	X	39V10018
5	1	39000019	O-RING, (-003)	X	39051006
4	1	23600011	BALL, STEEL, ALLOY, .187	X	X
3	2	21500200	WASHER		
2	2	21500018	SCREW, CAP, SOCH, M3 X 5, ALY		
1	1	21500009	SCREW, CAP, BTNH, M10 X 16, ALY		

Assemble with lip side facing bottom of body



Lubricate all seals with clean hydraulic fluid prior to assembly.
Do Not Use Silicone Based Lubricants.



PARTS LIST		 VEKTEK, INC. 1334 E. SIXTH AVE. P.O. BOX 625 EMPORIA, KS. 66801 U.S.A.	
ASSEMBLIES AFFECTED	41560521	PARTS LIST, ASSY, SC, TF, 4.9KN, DA, Ver.sCam	
	41560522		
	41560525		
SIZE	A	MPL1559	REV L

L	3925	RELEASE	JDW	10/22/19
REV	IN ACCORDANCE WITH ECN	EFFECTIVE DATE	REVISED BY	DATE
DRW BY: COMBES	DRAWING STATUS: Released			
DATE: 03/16/99	PRODUCTION APPROVED FOR RELEASED STATUS ONLY			