



VEKTEK, INC.
1334 E. SIXTH AVE.
P.O. BOX 625
EMPORIA, KS. 66801
U.S.A.

PARTS LIST

MPL-1582

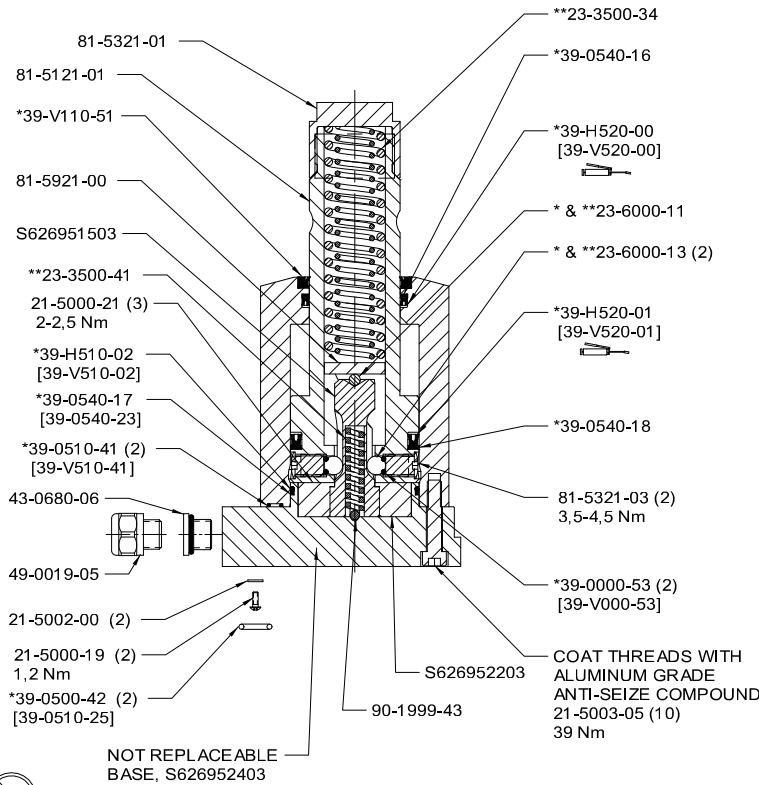
REV M
ECN 2721

MODEL
NUMBERS

41-5233-11

DRAWN/DATE
ROMINE
08/01/01

ASSY, SC, LP, BF, 33KN, SA, RH

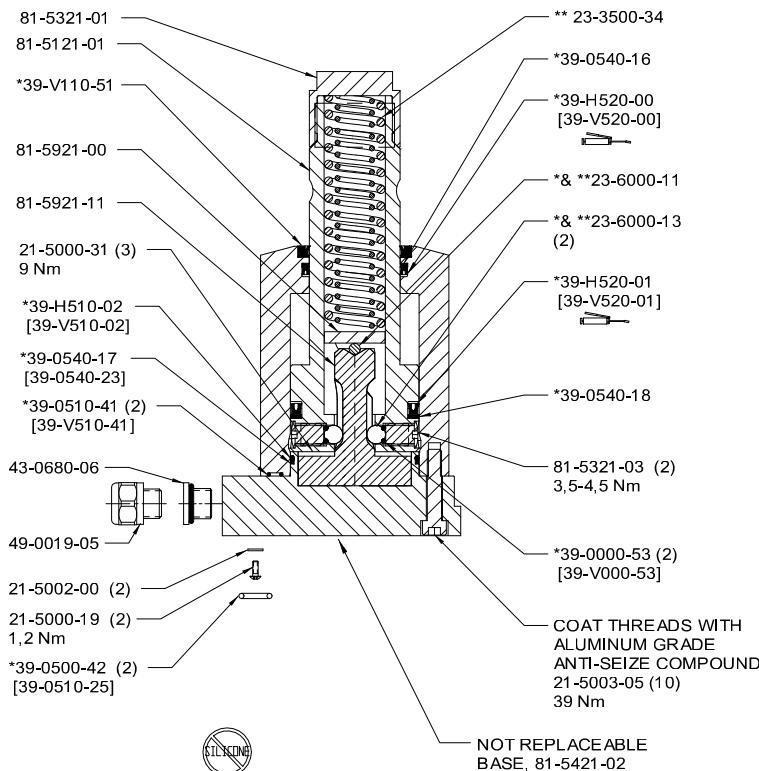


UNIT WITH PLUNGER CLUTCH
MODELS THAT APPLY
6951FN-33-11 , Revision B & Earlier

*INCLUDED IN STANDARD SEAL KIT No. 60-7110-16
FLUOROCARBON SEAL KIT No. [6V-7110-16]
**INCLUDED IN SPRING KIT No. 61-7040-06



ASSY, SC, LP, BF, 33KN, SA, RH



UNIT WITHOUT PLUNGER CLUTCH
AS OF 11/09/04
MODELS THAT APPLY
41-5233-11 , Revision A & Later
6951FN-33-11 , Revision C & Later

*INCLUDED IN STANDARD SEAL KIT No. 60-7110-16
FLUOROCARBON SEAL KIT No. [6V-7110-16]
**INCLUDED IN SPRING KIT No. 61-7040-09

