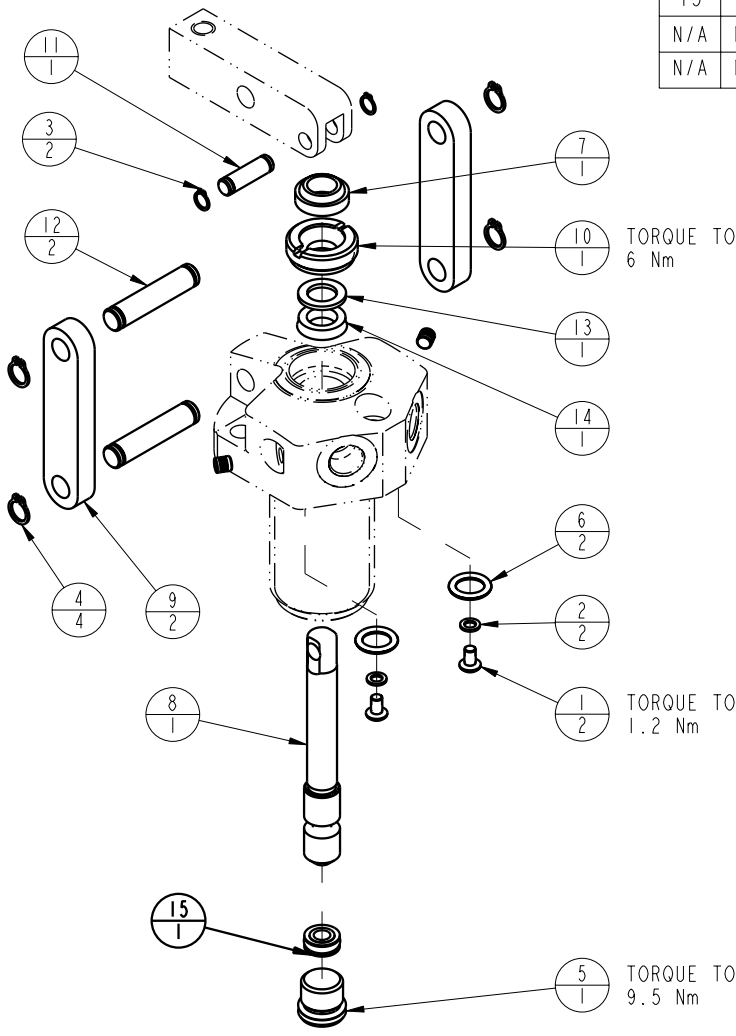


MODEL NO.			MODEL NAME
41662040			ASSY, LC, DA, 2 KN
NO.	QTY	PART NO.	DESCRIPTION
1	2	21500019	SCREW, CAP, BTNH, M3 X 6, ALY
2	2	21500200	WASHER
3	2	23050020	RING, RTNG, EXT, 0.188
4	4	23050021	RING, RTNG, EXT, 0.250
5	1	30670001	PLUG, SAE 4, FKM
6	2	39051025	O-RING, (-011)
7	1	39053025	WIPER, SNAP-IN, (5/16)
8	1	81600006	PLUNGER, LC, DA, 450/2 KN
9	2	81600021	LINK, LC, 450 lb
10	1	81600036	RETAINER, LC, 450
11	1	81600076	PIN, LC, SHORT, 450
12	2	81600081	PIN, LC, LONG, 450
13	1	39F54005	BU RING, (-109)
14	1	39V52031	SEAL, BEVEL, 5/16 x 3/32 x 1/2
15	1	39V52037	SEAL, T, (3/16 X 3/32 X 3/8)
N/A	N/A	60160001	KIT, SEAL, LC, 450/2KN
N/A	N/A	6V160001	KIT, SEAL, LC, 450/2KN, FKM



TORQUE TO 6 Nm


TORQUE TO 1.2 Nm

TORQUE TO 9.5 Nm

2. ALL SEALS, BU RINGS, RETAINING RINGS, O-RINGS, AND PLUGS ARE INCLUDED IN THE SEAL KIT.

1. APPLY LUBRICANT TO ALL SEALS PRIOR TO ASSEMBLY.

NOTE:

PARTS LIST	 VEKTEK, INC. 1334 E. SIXTH AVE. P.O. BOX 625 EMPORIA, KS. 66801 U.S.A.	
	ASSEMBLIES AFFECTED	PARTS LIST, LC, DA, 2 KN
41662040	SIZE A	REV D

D	2644	RELEASE	GAR	5/5/14
REV	IN ACCORDANCE WITH ECN	EFFECTIVE DATE	REVISED BY	DATE
DRW BY: JAW	<b>DRAWING STATUS: Released</b>			
DATE: 05/20/05	PRODUCTION APPROVED FOR RELEASED STATUS ONLY			