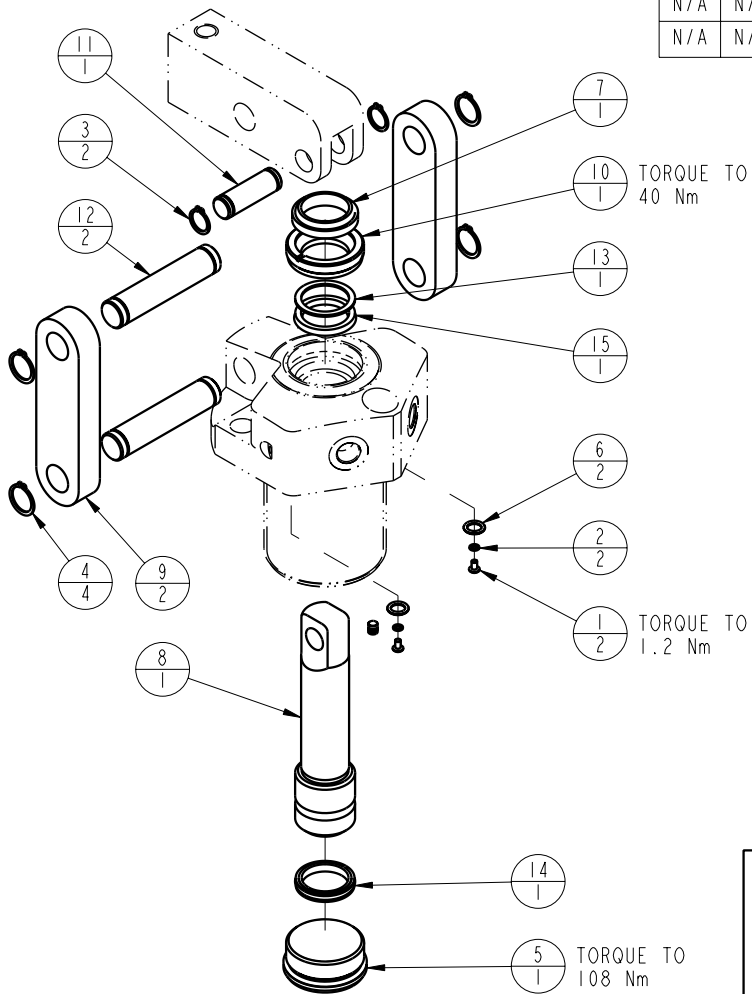



MODEL NO.		MODEL NAME	
41662140		ASSY, LC, DA, 22 KN	
NO.	QTY	PART NO.	DESCRIPTION
1	2	21500019	SCREW, CAP, BTNH, M3 X 6, ALY
2	2	21500200	WASHER
3	2	23050023	RING, RTNG, EXT, 0.500
4	4	23050024	RING, RTNG, EXT, 0.625
5	1	30670004	PLUG, SAE 20, FKM
6	2	39051025	O-RING, (-011)
7	1	39053029	WIPER, SNAP-IN, (1)
8	1	81600009	PLUNGER, LC, DA, 5000/ 22 KN
9	2	81600024	LINK, LC, 5000 lb
10	1	81600039	RETAINER, LC, 5000
11	1	81600079	PIN, LC, SHORT, 5000
12	2	81600084	PIN, LC, LONG, 5000
13	1	39F54007	BU RING, (-214)
14	1	39V11033	SEAL, T, (1 X 1/8 X 1 1/4)
15	1	39V52034	SEAL, BEVEL, 1 x 1/8 x 1-1/4
N/A	N/A	60-1600-04	KIT, SEAL, LC, 5000/22KN, STD
N/A	N/A	6V-1600-04	KIT, SEAL, LC, 5000/22KN, FKM



2. ALL SEALS, BU RINGS, RETAINING RINGS, O-RINGS, AND PLUGS ARE INCLUDED IN THE SEAL KIT.
1. APPLY LUBRICANT TO ALL SEALS PRIOR TO ASSEMBLY.

NOTE:

PARTS LIST	 VEKTEK, INC. 1334 E. SIXTH AVE. P.O. BOX 625 EMPORIA, KS. 66801 U.S.A.	
	ASSEMBLIES AFFECTED	PARTS LIST, LC, DA, 22 KN
41662140	SIZE A	REV D
		FORM FEG035_PL_ASIZE, REV. B

D	2644	RELEASE	GAR	5/5/14
REV	IN ACCORDANCE WITH ECN	EFFECTIVE DATE	REVISED BY	DATE
DRW BY: K. ROEMER	<b>DRAWING STATUS: Released</b>			
DATE: 07/30/04	PRODUCTION APPROVED FOR RELEASED STATUS ONLY			