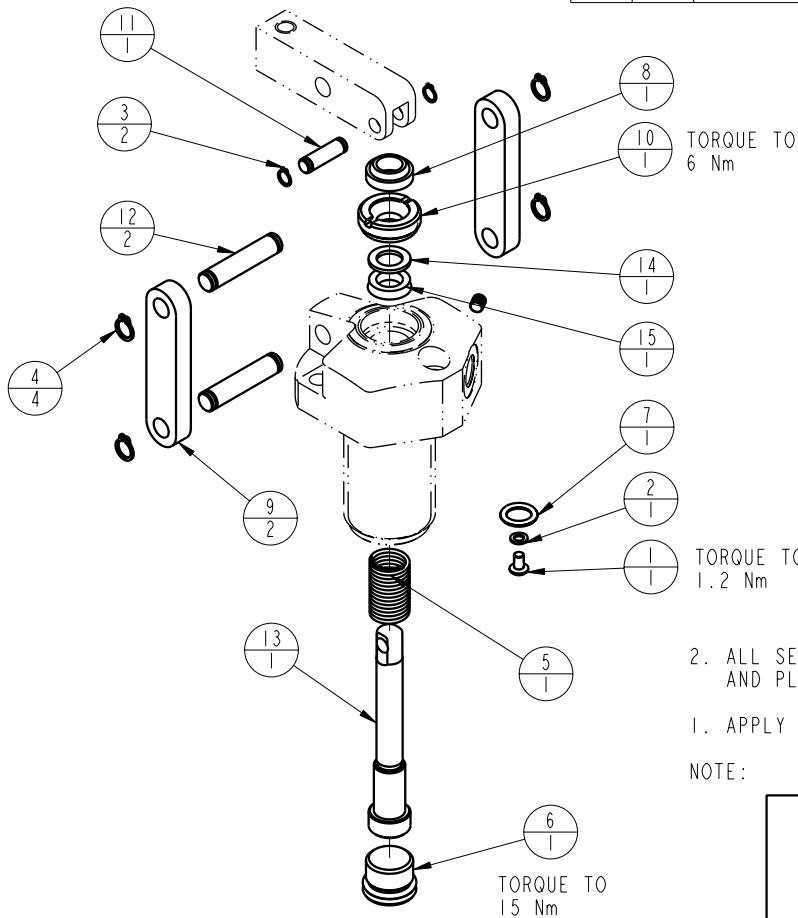



MODEL NO.			MODEL NAME
41661040			ASSY, LC, SA, 15 KN
NO.	QTY	PART NO.	DESCRIPTION
1	1	21500019	SCREW, CAP, BTNH, M3 X 6, ALY
2	1	21500200	WASHER
3	2	23050020	RING, RTNG, EXT, 0.188
4	4	23050021	RING, RTNG, EXT, 0.250
5	1	23350048	SPRING, COMPRESSION
6	1	30670008	PLUG, SAE 6, FKM
7	1	39051025	O-RING, (-011)
8	1	39053025	WIPER, SNAP-IN, (5/16)
9	2	81600021	LINK, LC, 450 lb
10	1	81600036	RETAINER, LC, 450
11	1	81600076	PIN, LC, SHORT, 450
12	2	81600081	PIN, LC, LONG, 450
13	1	81600112	PLUNGER, LC, SA, 350/1.5 KN
14	1	39F54005	BU RING, (-109)
15	1	39V52031	SEAL, BEVEL, 5/16 x 3/32 x 1/2
N/A	N/A	60-1600-11	KIT, SEAL, LC, SA, 350/1.5 KN
N/A	N/A	6V-1600-11	KIT, SEAL, LC, SA, 350/1.5 KN, FKM



2. ALL SEALS, BU RINGS, RETAINING RINGS, O-RINGS, AND PLUGS ARE INCLUDED IN THE SEAL KIT.
1. APPLY LUBRICANT TO ALL SEALS PRIOR TO ASSEMBLY.

NOTE:

PARTS LIST	 VEKTEK, INC. 1334 E. SIXTH AVE. P.O. BOX 625 EMPORIA, KS. 66801 U.S.A.	
	ASSEMBLIES AFFECTED	PARTS LIST, LC, SA, 1.5 KN
41-6610-40	SIZE A	REV C
		MPL1609
		FORM FEG035_PL_ASIZE, REV. B

C	2644	RELEASE	GAR	5/5/14
REV	IN ACCORDANCE WITH ECN	EFFECTIVE DATE	REVISED BY	DATE
DRW BY: K. ROEMER	DRAWING STATUS: <b>Released</b>			
DATE: 08/23/06	PRODUCTION APPROVED FOR RELEASED STATUS ONLY			