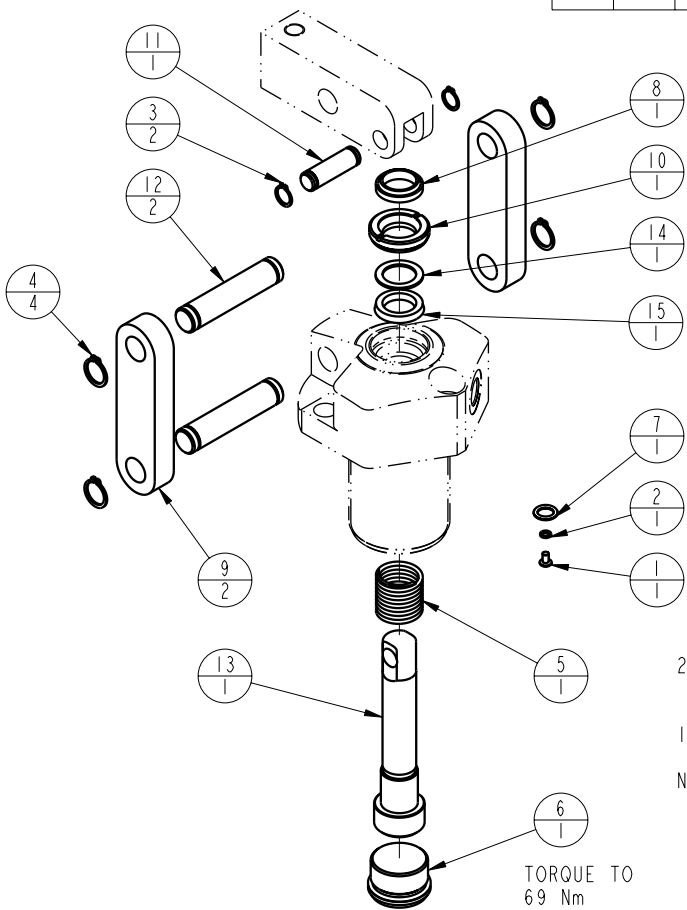


MODEL NO.			MODEL NAME
41661090			ASSY, LC, SA, 6 KN
NO.	QTY	PART NO.	DESCRIPTION
1	1	21500019	SCREW, CAP, BTNH, M3 X 6, ALY
2	1	21500200	WASHER
3	2	23050022	RING, RTNG, EXT, 0.375
4	4	23050023	RING, RTNG, EXT, 0.500
5	1	23350050	SPRING, COMPRESSION
6	1	30670003	PLUG, SAE 12, FKM
7	1	39051025	O-RING, (-011)
8	1	39053027	WIPER, SNAP-IN, (5/8)
9	2	81600023	LINK, LC, 2600 1b
10	1	81600038	RETAINER, LC, 2600
11	1	81600078	PIN, LC, SHORT, 2600
12	2	81600083	PIN, LC, LONG, 2600
13	1	81600114	PLUNGER, LC, SA, 1300/6 KN
14	1	39F54001	BU RING, (-208 CUSTOM)
15	1	39V52033	SEAL, BEVEL, 5/8 x 1/8 x 7/8
N/A	N/A	60-1600-13	KIT, SEAL, LC, SA, 1300/6 KN
N/A	N/A	6V-1600-13	KIT, SEAL, LC, SA, 1300/6 KN, FKM



TORQUE TO 6 Nm

TORQUE TO 1.2 Nm

TORQUE TO 69 Nm

2. ALL SEALS, BU RINGS, RETAINING RINGS, O-RINGS, AND PLUGS ARE INCLUDED IN THE SEAL KIT.

1. APPLY LUBRICANT TO ALL SEALS PRIOR TO ASSEMBLY.

NOTE:

PARTS LIST



VEKTEK, INC.
1334 E. SIXTH AVE. P.O. BOX 625
EMPORIA, KS. 66801 U.S.A.

ASSEMBLIES AFFECTED

PARTS LIST, LC, SA, 6 KN

41-6610-90

SIZE
A

MPL1611

REV
C

SHEET 1 OF 1

C	2644	RELEASE	GAR	5/5/14
REV	IN ACCORDANCE WITH ECN	EFFECTIVE DATE	REVISED BY	DATE
DRW BY:	K. ROEMER	DRAWING STATUS: Released		
DATE:	08/23/06	PRODUCTION APPROVED FOR RELEASED STATUS ONLY		

FORM FEG035_PL_ASIZE, REV. B