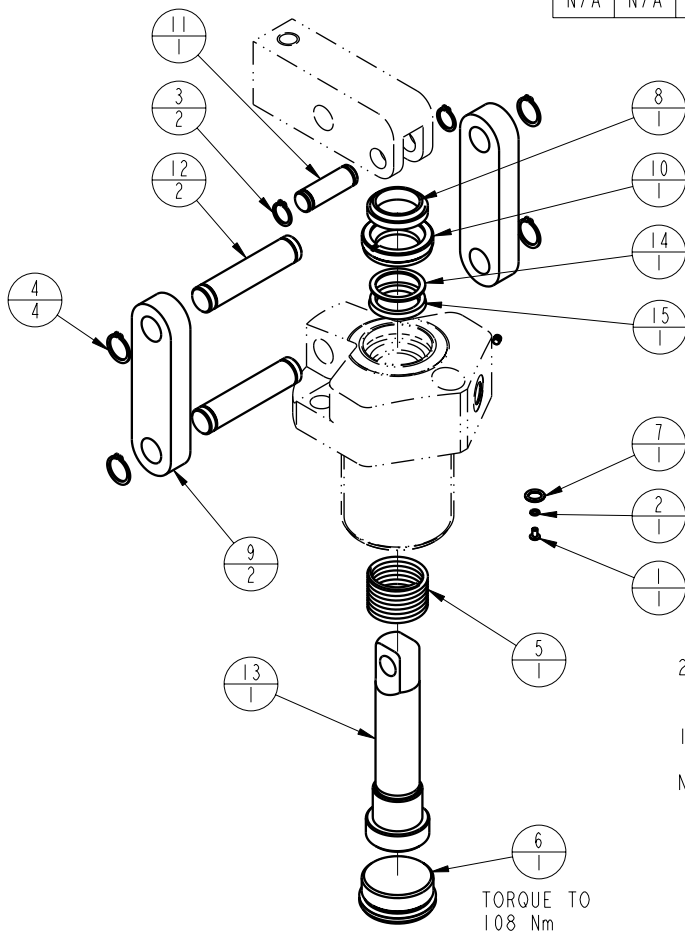


MODEL NO.			MODEL NAME
41661140			ASSY, LC, SA, 13 KN
NO.	QTY	PART NO.	DESCRIPTION
1	1	21500019	SCREW, CAP, BTNH, M3 X 6, ALY
2	1	21500200	WASHER
3	2	23050023	RING, RTNG, EXT, 0.500
4	4	23050024	RING, RTNG, EXT, 0.625
5	1	23350051	SPRING, COMPRESSION
6	1	30670004	PLUG, SAE 20, FKM
7	1	39051025	O-RING, (-011)
8	1	39053029	WIPER, SNAP-IN, (1)
9	2	81600024	LINK, LC, 5000 1b
10	1	81600039	RETAINER, LC, 5000
11	1	81600079	PIN, LC, SHORT, 5000
12	2	81600084	PIN, LC, LONG, 5000
13	1	81600115	PLUNGER, LC, SA, 3000/13 KN
14	1	39F54007	BU RING, (-214)
15	1	39V52034	SEAL, BEVEL, 1 x 1/8 x 1-1/4
N/A	N/A	60-1600-14	KIT, SEAL, LC, SA, 3000/13 KN
N/A	N/A	6V-1600-14	KIT, SEAL, LC, SA, 3000/13 KN, FKM



TORQUE TO
40 Nm

TORQUE TO
1.2 Nm

2. ALL SEALS, BU RINGS, RETAINING RINGS, O-RINGS, AND PLUGS ARE INCLUDED IN THE SEAL KIT.

1. APPLY LUBRICANT TO ALL SEALS PRIOR TO ASSEMBLY.

NOTE:

PARTS LIST



VEKTEK, INC.
1334 E. SIXTH AVE. P.O. BOX 625
EMPORIA, KS. 66801 U.S.A.

ASSEMBLIES AFFECTED

PARTS LIST, LC, SA, 13 KN

41-6611-40

SIZE
A

MPL1612

REV
C

SHEET 1 OF 1

FORM FEG035_PL_AS1ZE, REV. B

C	2644	RELEASE	GAR	5/5/14
REV	IN ACCORDANCE WITH ECN	EFFECTIVE DATE	REVISED BY	DATE
DRW BY:	K. ROEMER	DRAWING STATUS: Released		
DATE:	08/23/06	PRODUCTION APPROVED FOR RELEASED STATUS ONLY		