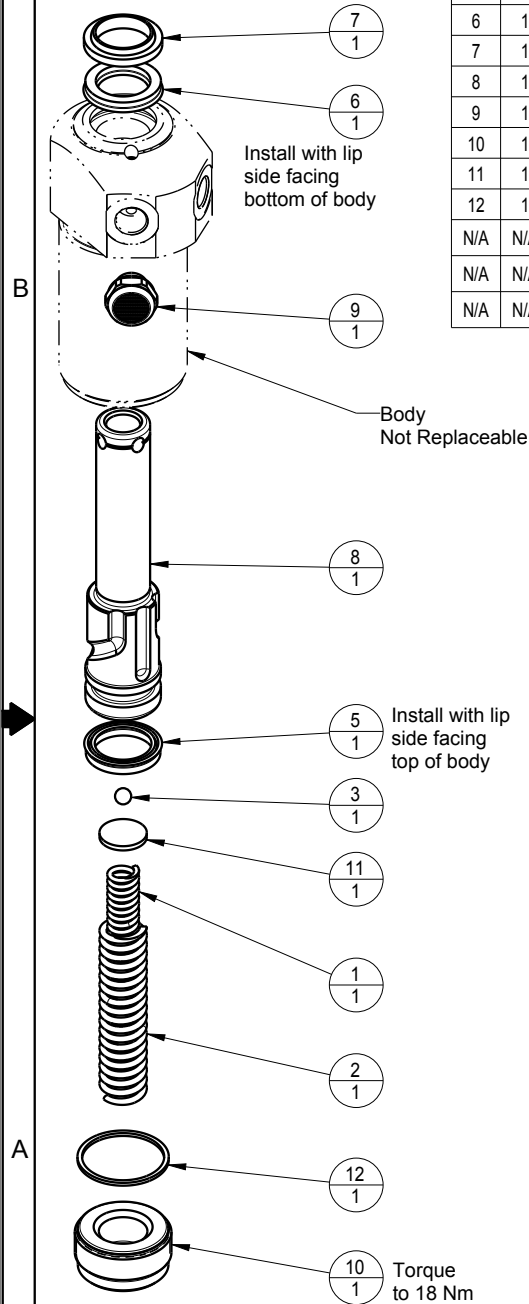
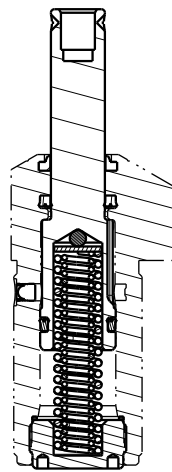



NO	QTY	PART NO	DESCRIPTION	STD SEAL KIT	FKM SEAL KIT	SPRING KIT
1	1	23311013	SPRING, COMPRESSION			X
2	1	23313008	SPRING, COMPRESSION			X
3	1	23600011	BALL, STEEL, ALLOY, .187	X	X	X
4	1	27412004	PLUG, SEALING, 5mm			
5	1	39010015	SEAL, BEVEL, 11/16 x 3/32 x 7/8	X	39052011	
6	1	39010020	SEAL, BEVEL W/HEEL INSERT, 5/8 x 1/8 x 7/8	X	39V10020	
7	1	39053001	WIPER, SNAP-IN, (5/8)	X	X	
8	1	47510900	PLUNGER, SC, 4.9 kN			
9	1	49001904	BREATHER, 1/8 BSPP			
10	1	81530901	RETAINER, SC, 1100			
11	1	81590901	DISK, PIVOT, BALL, SC, 1100, SA			X
12	1	39T55002	GASKET, (-021)	X	X	X
N/A	N/A	46250101	KIT, SEAL, CYL, PP, TB, SA, 6.2KN	NOTED	N/A	N/A
N/A	N/A	6V250105	KIT, SEAL, CYL, PP, TB, SA, 6.2KN, FKM	N/A	NOTED	N/A
N/A	N/A	46100007	KIT, SPRING	N/A	N/A	NOTED



Lubricate all seals with clean hydraulic fluid prior to assembly



SECTION A-A

PARTS LIST	 VEKTEK, INC. 1334 E. SIXTH AVE. P.O. BOX 625 EMPORIA, KS. 66801 U.S.A.	
	ASSEMBLIES AFFECTED	PARTS LIST, ASSY, CYL, PP, TB, 6.2KN
REV	DATE	REV B
DATE: 5-4-17	DATE	DATE
SIZE A	MPL2108	REV B

B	3297	RELEASE	GAR	8/8/17
REV	IN ACCORDANCE WITH ECN	EFFECTIVE DATE	REVISED BY	DATE
DRW BY: MAJ	DRAWING STATUS: Released			
DATE: 5-4-17	PRODUCTION APPROVED FOR RELEASED STATUS ONLY			

SHEET 1 OF 1