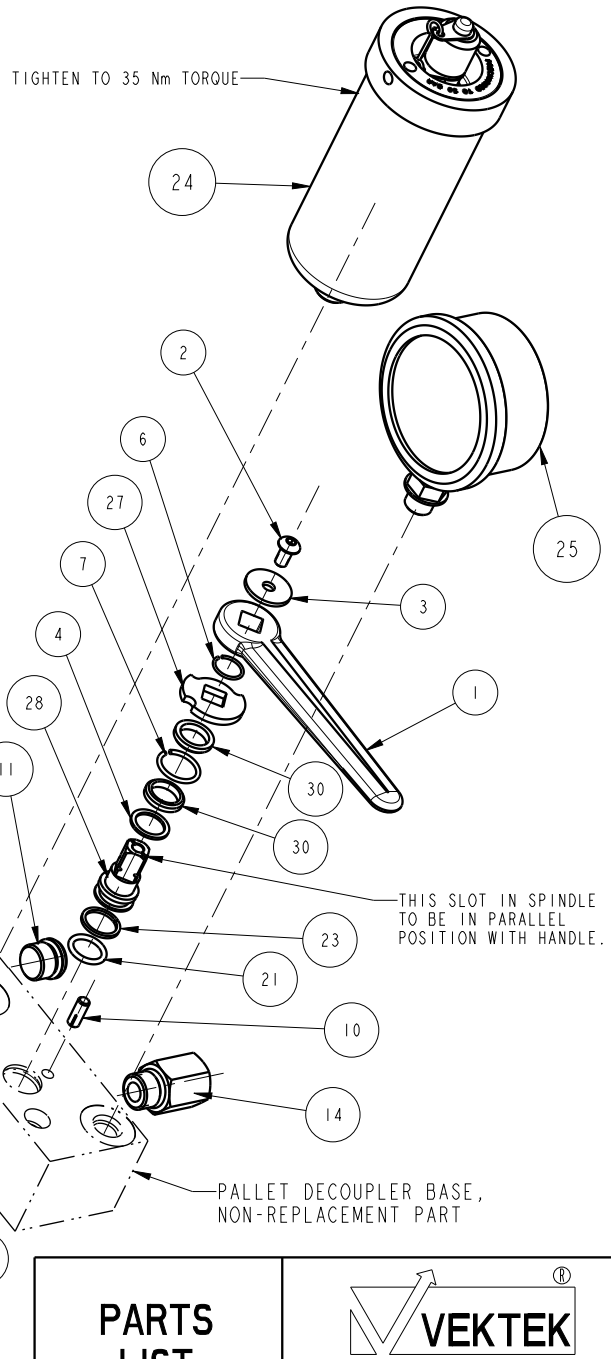


No.	QTY	PART No.	DESCRIPTION	Included in Repair Kit
N/A	N/A	62560000	KIT, REPAIR, PALLET DECOUPLER	
31	1	39V00068	O-RING, (-202)	*
30	2	87010193	SPACER, SPINDLE, STEEL, VALVE, BALL	*
29	1	87010192	BALL, CONTROL, DIRECTIONAL	*
28	1	87010191	SPINDLE, CONTROL, VALVE, BALL	*
27	1	87010190	WASHER, LIMIT, VALVE, BALL	*
26	1	85670000	ADAPTOR, DECOUPLER, PALLET	
25	1	72212152	GAUGE, PRESS, HYDR, 5000 PSI	
24	1	49011604	ASSY, ACC, 59 CC, 50 BAR, SAE 6	
23	1	39010042	BU RING, (-014)	*
22	2	39010040	SEAL, VALVE, BALL	*
21	1	39000037	O-RING, (-906)	*
20	1	39000035	O-RING, (-015)	*
19	1	39000026	O-RING, (-906)	*
18	1	35349089	EXPANSION PLUG	*
17	1	35349057	GUIDE, RELEASE	*
16	1	35349056	ROD, RELEASE	*
15	1	31050001	FILTER SCREEN, SAE 6, 178 MICRON	*
14	1	30871966	ADAPTER, ACC, SAE 6 - G1/4	
13	1	30772766	COUPLING, OD, SAE 6, MALE	
12	1	30719706	COVER, DUST, OD, SAE 6	
11	3	30601166	PLUG, SOCH, SAE 6	
10	1	23521018	PIN, GROOVE, TYPE H, 3/16, 1/2 LONG	
9	1	23355004	SPRING, WIRE, FLAT, CREST-TO-CREST	*
8	1	23350057	SPRING, COMPRESSION	*
7	1	23012008	RETAINING RING, ROUND, INTL	*
6	1	23002011	RETAINING RING, ROUND, EXT	*
5	1	21440015	SHSS, OVAL POINT	*
4	1	21430017	WASHER	*
3	1	21430000	WASHER	*
2	1	21410004	BHCS, 10-32 x 3/8, ALY	*
1	1	00107000	HANDLE, VALVE, STRAIGHT	*

NOTE:

1. APPLY LUBRICANT TO ALL SEALS PRIOR TO INSTALLATION. DO NOT USE SILICON TYPE LUBRICANTS.
2. SET THE OVER-PRESSURE RELIEF VALVE AT 415 BAR AND THEN INSTALL THE EXPANSION PLUG.



PARTS LIST



VEKTEK, INC.  
1334 E. SIXTH AVE. P.O. BOX 625  
EMPORIA, KS. 66801 U.S.A.

ASSEMBLIES AFFECTED  
45-6001-02

PARTS LIST, ASSY, PD, VERT, 50 BAR

M	2805	RELEASE	JDW	03/04/15
REV	IN ACCORDANCE WITH ECN	EFFECTIVE DATE	REVISED BY	DATE
DRW BY:	BUSH	DRAWING STATUS: <b>Released</b>		
DATE:	1-16-95	PRODUCTION APPROVED FOR RELEASED STATUS ONLY		

SIZE	MPL5603	REV	M
A			

FORM FEG035\_PL\_ASIZE, REV. B

SHEET 1 OF 1