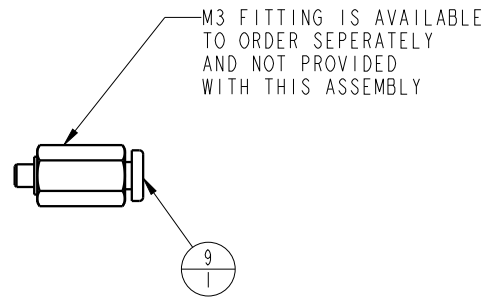
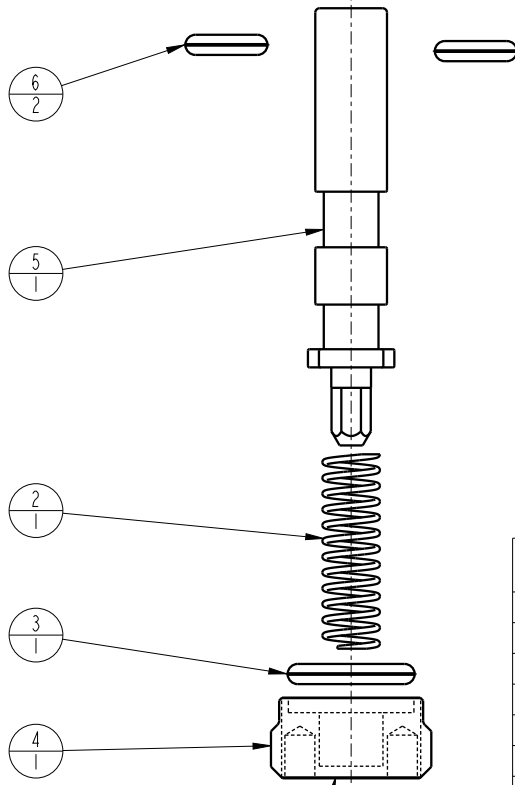
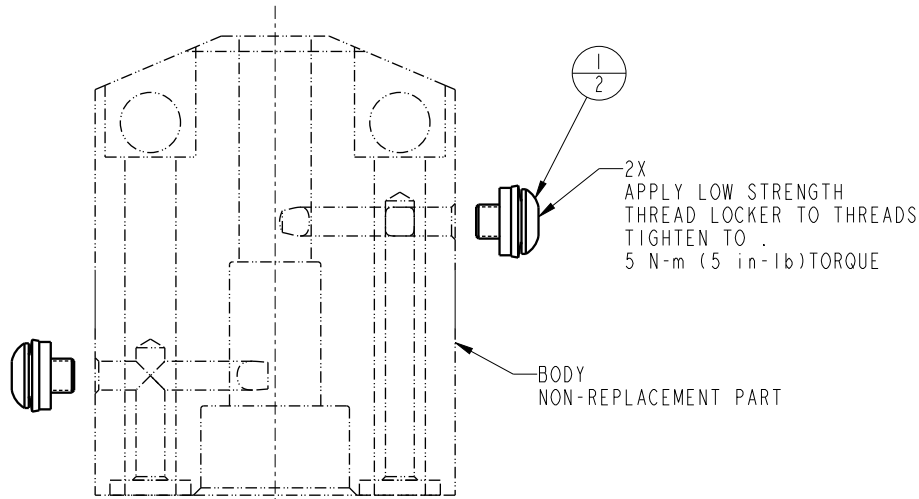


THIS IS A TWO PAGE PARTS LIST.  
THIS FIRST PAGE APPLIES TO  
MODELS 45-0485-00 & L5-0485-00  
AT REVISION B AND LATER REVISIONS.



NO	QTY	PART NO	DESCRIPTION	REPAIR KIT
1	2	21500055	SCREW, CAP, BTNH, M3 X 4, SST, w/ BND WSHR	X
2	1	23350133	SPRING, COMPRESSION	X
3	1	39051025	O-RING, (-011)	X
4	1	85040002	RETAINER, SENSOR, POSITION, PNEU	
5	1	85040003	PISTON, SENSOR, POSITION, PNEU, OCO	
6	2	39V00053	O-RING, (-007)	X
9	N/A	P3037020	1/8 TUBE - M3 CONNECTOR	
N/A	N/A	62504000	KIT, REPAIR	NOTED
N/A	N/A	1S5003	INSTRUCTION SHEET	

### PARTS LIST



VEKTEK, INC.  
1334 E. SIXTH AVE. P.O. BOX 625  
EMPORIA, KS. 66801 U.S.A.

ASSEMBLIES AFFECTED  
45-0485-00  
L5-0485-00

PARTS LIST, ASSY, SENSOR, POSITION, PNEU, OCO

SIZE  
A

MPL6903

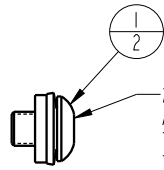
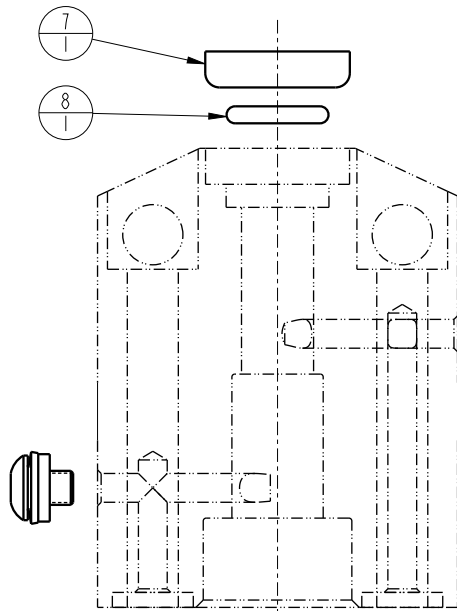
REV  
D

SHEET 1 OF 2

FORM FEG035\_PL\_ASIZE, REV. B

D	5164	RELEASE	RLK	8/28/23
REV	IN ACCORDANCE WITH ECN	EFFECTIVE DATE	REVISED BY	DATE
DRW BY: MAJ	<b>DRAWING STATUS: Released</b>			
DATE: 11-11-16	PRODUCTION APPROVED FOR RELEASED STATUS ONLY			

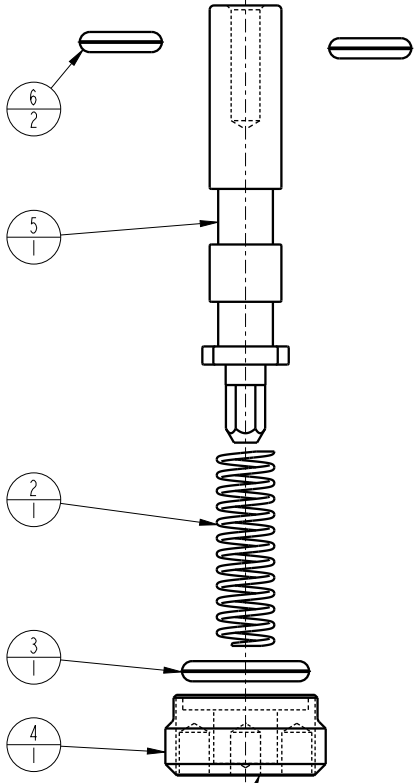
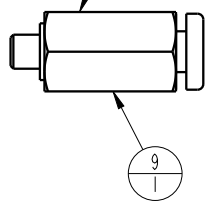
THIS IS A TWO PAGE PARTS LIST.  
 THIS SECOND PAGE APPLIES TO  
 MODELS 45-0485-00 & L5-0485-00 AT REVISION A.



2X  
 APPLY LOW STRENGTH  
 THREAD LOCKER TO THREADS  
 TIGHTEN TO  
 5 N-m (5 in-lb) TORQUE

BODY  
 NON-REPLACEMENT PART

M3 FITTING IS AVAILABLE  
 TO ORDER SEPARATELY  
 AND NOT PROVIDED  
 WITH THIS ASSEMBLY



NO	QTY	PART NO	DESCRIPTION	REPAIR KIT
1	2	21500055	SCREW, CAP, BTNH, M3 X 4, SST, w/ BND WSHR	X
2	1	23350133	SPRING, COMPRESSION	X
3	1	39051025	O-RING, (-011)	X
4	1	85040002	RETAINER, SENSOR, POSITION, PNEU	
5	1	85040003	PISTON, SENSOR, POSITION, PNEU, OCO	
6	2	39V00053	O-RING, (-007)	X
7	1	39V10029	WIPER, PRESS-IN, (1/4)	X
8	1	39V51001	O-RING, (6mm x 1.5)	X
10	N/A	P3037020	1/8- TUBE - M3 CONNECTOR	
N/A	N/A	62504000	KIT, REPAIR	NOTED
N/A	N/A	IS5003	INSTRUCTION SHEET	

APPLY LOW STRENGTH  
 THREAD LOCKER TO THREADS  
 TIGHTEN TO  
 2.8 N-m (25 in-lb) TORQUE

<b>PARTS LIST</b>	
	VEKTEK, INC. 1334 E. SIXTH AVE. P.O. BOX 625 EMPORIA, KS. 66801 U.S.A.
ASSEMBLIES AFFECTED 45-0485-00 L5-0485-00	PARTS LIST, ASSY, SENSOR, POSITION, PNEU, OCO
SIZE A	MPL6903
	REV D

D	5164	RELEASE	RLK	8/28/23
REV	IN ACCORDANCE WITH ECN	EFFECTIVE DATE	REVISED BY	DATE
DRW BY:	MAJ	<b>DRAWING STATUS: Released</b>		
DATE:	11/11/16	PRODUCTION APPROVED FOR RELEASED STATUS ONLY		

SHEET 2 OF 2