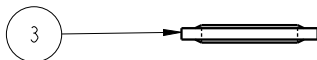
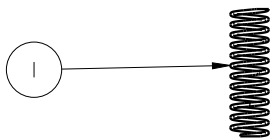
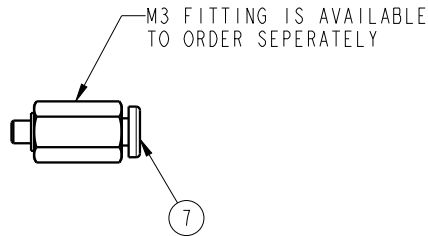
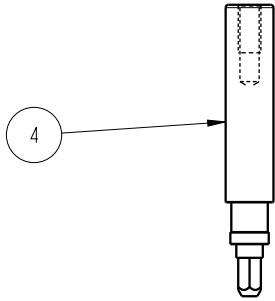
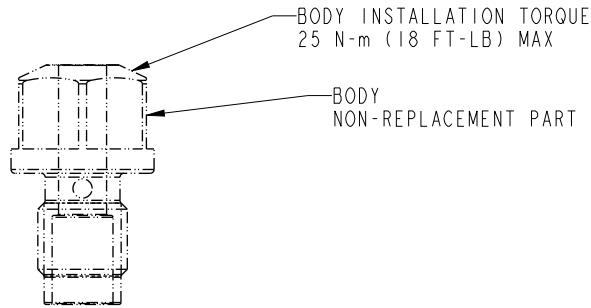


THIS IS A TWO PAGE PARTS LIST.
 THIS FIRST PAGE APPLIES TO
 MODELS 45-0459-01 & L5-0459-01 AT REVISION B AND LATER REVISIONS.



NO	QTY	PART NO	DESCRIPTION	REPAIR KIT
1	1	23350133	SPRING, COMPRESSION	X
2	1	39051091	O-RING, (7.5mm x 1.5)	X
3	1	39055021	SEAL, BONDED, M12	X
4	1	85040004	PISTON, SENSOR, POSITION, PNEU, OC	
7	N/A	P3037020	1/8 TUBE- M3 CONNECTOR	
N/A	N/A	62504001	KIT, REPAIR	NOTED
N/A	N/A	1S5003	INSTRUCTION SHEET	

PARTS LIST



VEKTEK, INC.
 1334 E. SIXTH AVE. P.O. BOX 625
 EMPORIA, KS. 66801 U.S.A.

C	5164	RELEASE	RLK	8/28/23
REV	IN ACCORDANCE WITH ECN	EFFECTIVE DATE	REVISED BY	DATE
DRW BY:	MAJ	DRAWING STATUS: Released		
DATE:	11/11/16	PRODUCTION APPROVED FOR RELEASED STATUS ONLY		

ASSEMBLIES AFFECTED
 45049501
 L5049501

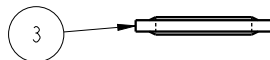
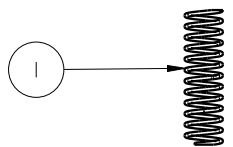
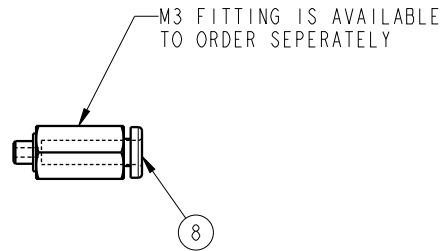
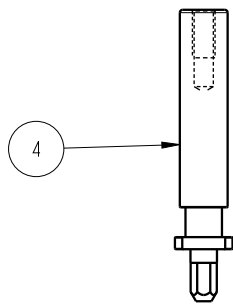
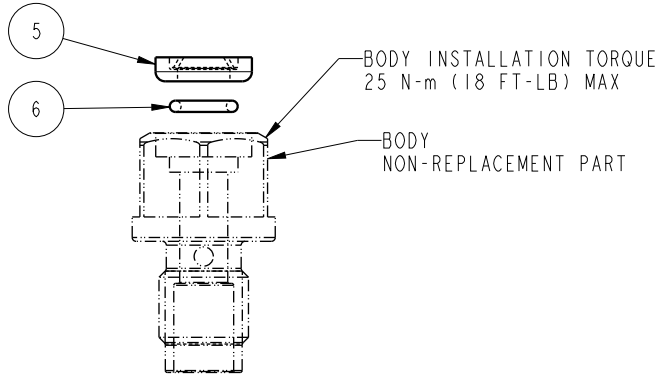
PARTS LIST, ASSY, SENSOR, POSITION, PNEU, OC

SIZE A
MPL6906

REV C

SHEET 1 OF 2

THIS IS A TWO PAGE PARTS LIST.
 THIS SECOND PAGE APPLIES TO
 MODELS 45-0459-01 & L5-0459-01 AT REVISION A.



NO	QTY	PART NO	DESCRIPTION	REPAIR KIT
1	1	23350133	SPRING, COMPRESSION	X
2	1	39051091	O-RING, (7.5mm x 1.5)	X
3	1	39055021	SEAL, BONDED, M12	X
4	1	85040004	PISTON, SENSOR, POSITION, PNEU, OC	
5	1	39V10029	WIPER, PRESS-IN, (1/4)	X
6	1	39V51001	O-RING, (6mm x 1.5)	X
8	N/A	P3037020	1/8 TUBE - M3 CONNECTOR	
N/A	N/A	62504001	KIT, REPAIR	NOTED
N/A	N/A	ISS003	INSTRUCTION SHEET	

PARTS LIST



VEKTEK, INC.
 1334 E. SIXTH AVE. P.O. BOX 625
 EMPORIA, KS. 66801 U.S.A.

ASSEMBLIES AFFECTED
 45049501
 L5049501

PARTS LIST, ASSY, SENSOR, POSITION, PNEU, CART, OC

SIZE
 A MPL6906

REV
 C

C	5164	RELEASE	RLK	8/28/23
REV	IN ACCORDANCE WITH ECN	EFFECTIVE DATE	REVISED BY	DATE
DRW BY: MAJ	DRAWING STATUS: Released			
DATE: 11/11/16	PRODUCTION APPROVED FOR RELEASED STATUS ONLY			