


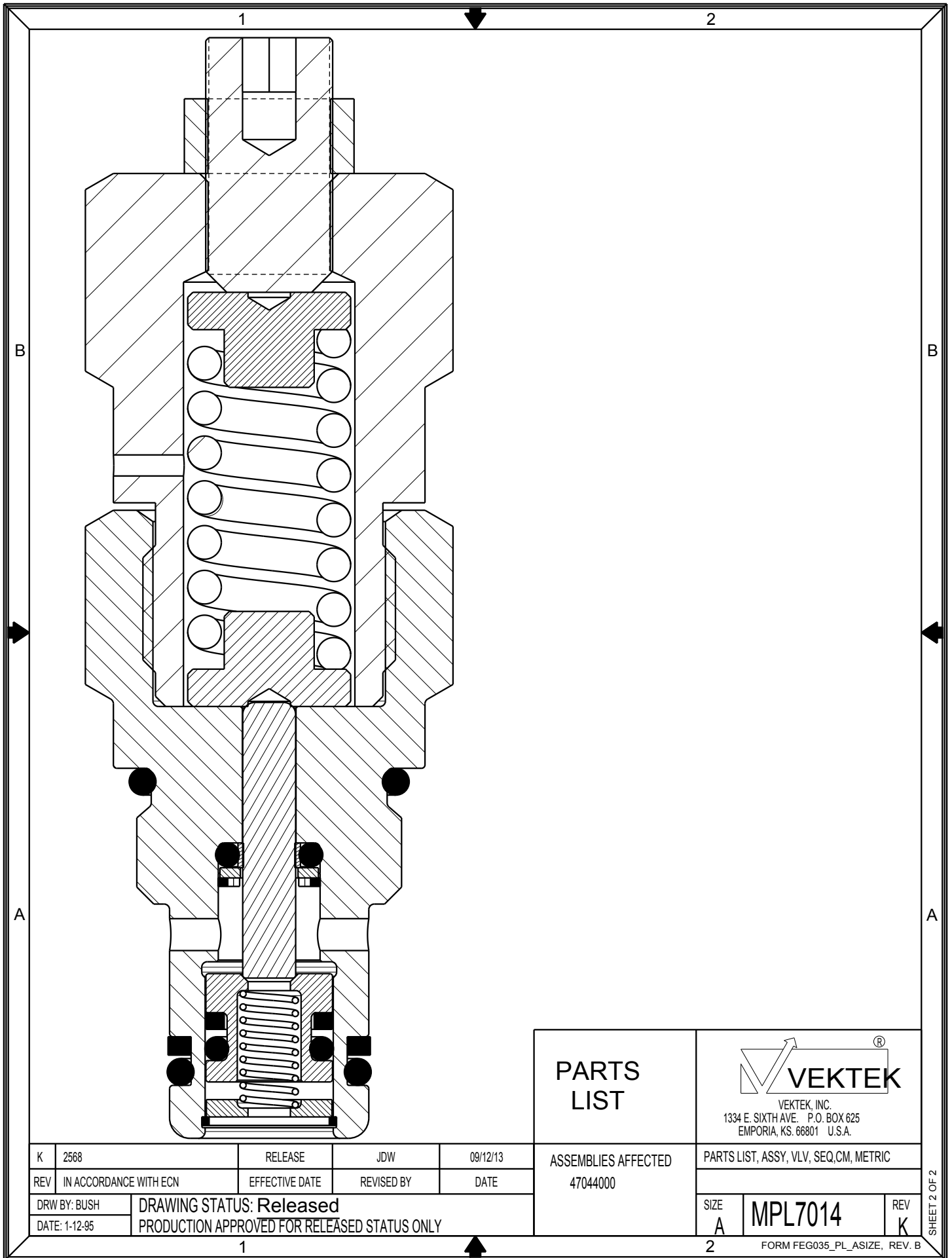
| No. | QTY | PART No. | DESCRIPTION | STD. SEAL KIT | FKM SEAL KIT | SPRING KIT |
|-----|-----|------------|------------------------------|-----------------|--------------|------------|
| 1 | 1 | 21-4400-35 | SET SCREW,FLAT POINT | NO | NO | NO |
| 2 | 1 | 21-4200-19 | HEX NUT | NO | NO | NO |
| 3 | 1 | 87-0000-30 | BODY,(NON-REPLACEMENT PART) | NO | NO | NO |
| 4 | 2 | 87-0300-00 | SPRING GUIDE | NO | NO | NO |
| 5 | 1 | 23-3120-05 | SPRING | NO | NO | YES |
| 6 | 1 | 87-0500-00 | GLAND,(NON-REPLACEMENT PART) | NO | NO | NO |
| 7 | 1 | 87-0100-01 | PLUNGER | NO | NO | NO |
| 8 | 1 | 39-0100-63 | ROD SEAL | YES | YES | NO |
| 9 | 1 | 39-0000-09 | O-RING (STANDARD) | YES | NO | NO |
| | 1 | 39-0510-21 | O-RING (FLUOROCARBON) | NO | YES | NO |
| 10 | 1 | 21-4300-22 | RETAINER | NO | NO | NO |
| 11 | 1 | 23-0100-06 | RETAINING RING | YES | YES | NO |
| 12 | 1 | 87-0100-00 | PISTON | NO | NO | NO |
| 13 | 1 | 39-0100-61 | BU RING | YES | YES | NO |
| 14 | 1 | 39-0000-63 | O-RING | YES | YES | NO |
| 15 | 1 | 23-3100-14 | SPRING | YES | YES | YES |
| 16 | 1 | 87-0300-02 | RETAINER | NO | NO | NO |
| 17 | 1 | 23-0020-15 | RETAINING RING | YES | YES | YES |
| 18 | 1 | 39-0100-62 | BU RING | YES | YES | NO |
| 19 | 1 | 39-0000-65 | O-RING (STANDARD) | YES | NO | NO |
| | 1 | 39-V000-65 | O-RING (FLUOROCARBON) | NO | YES | NO |
| 20 | 1 | 39-0000-64 | O-RING (STANDARD) | YES | NO | NO |
| | 1 | 39-V000-64 | O-RING (FLUOROCARBON) | NO | YES | NO |
| N/A | N/A | 60-7040-00 | SEAL KIT (STANDARD) | INCLUDED IN KIT | | |
| N/A | N/A | 6V-7040-00 | SEAL KIT (FLUOROCARBON) | | | |
| N/A | N/A | 61-7040-00 | SPRING KIT | | | |


NOTES:
1. LUBRICATE ALL SEALS BEFORE ASSEMBLY.

| | |
|----------------------------------|---|
| PARTS LIST |  VEKTEK, INC. 1334 E. SIXTH AVE. P.O. BOX 625 EMPORIA, KS. 66801 U.S.A. |
| | ASSEMBLIES AFFECTED 47044000 |
| PARTS LIST, VLV, SEQ, CM, METRIC | SIZE A |
| DATE: 1-12-95 | REV K |
| MPL7014 | |

| | | | | |
|---------------|---|----------------|------------|----------|
| K | 2568 | RELEASE | JDW | 09/12/13 |
| REV | IN ACCORDANCE WITH ECN | EFFECTIVE DATE | REVISED BY | DATE |
| DRW BY: BUSH | DRAWING STATUS: Released PRODUCTION APPROVED FOR RELEASED STATUS ONLY | | | |
| DATE: 1-12-95 | | | | |

SHEET 1 OF 2



| | | |
|---|---|--|
| PARTS LIST |  VEKTEK, INC. 1334 E. SIXTH AVE. P.O. BOX 625 EMPORIA, KS. 66801 U.S.A. | |
| | ASSEMBLIES AFFECTED | PARTS LIST, ASSY, VLV, SEQ, CM, METRIC |
| 47044000 | SIZE A | REV K |
| DRAWING STATUS: Released PRODUCTION APPROVED FOR RELEASED STATUS ONLY | | FORM FEG035_PL_ASIZE, REV. B |

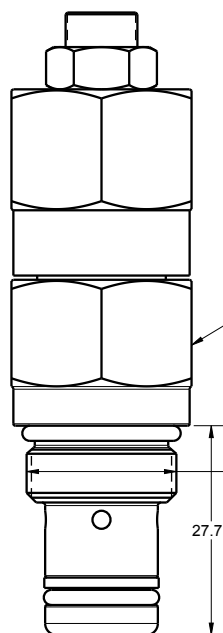
| | | | | |
|---------|------------------------|----------------|------------|----------|
| K | 2568 | RELEASE | JDW | 09/12/13 |
| REV | IN ACCORDANCE WITH ECN | EFFECTIVE DATE | REVISED BY | DATE |
| DRW BY: | BUSH | | | |
| DATE: | 1-12-95 | | | |

SHEET 2 OF 2

1

2

NOTE:
FOR CAVITY TOOLING (MULTI-STEP REAMER AND M20 X 1.5 TAP), ORDER KIT 62-7040-00



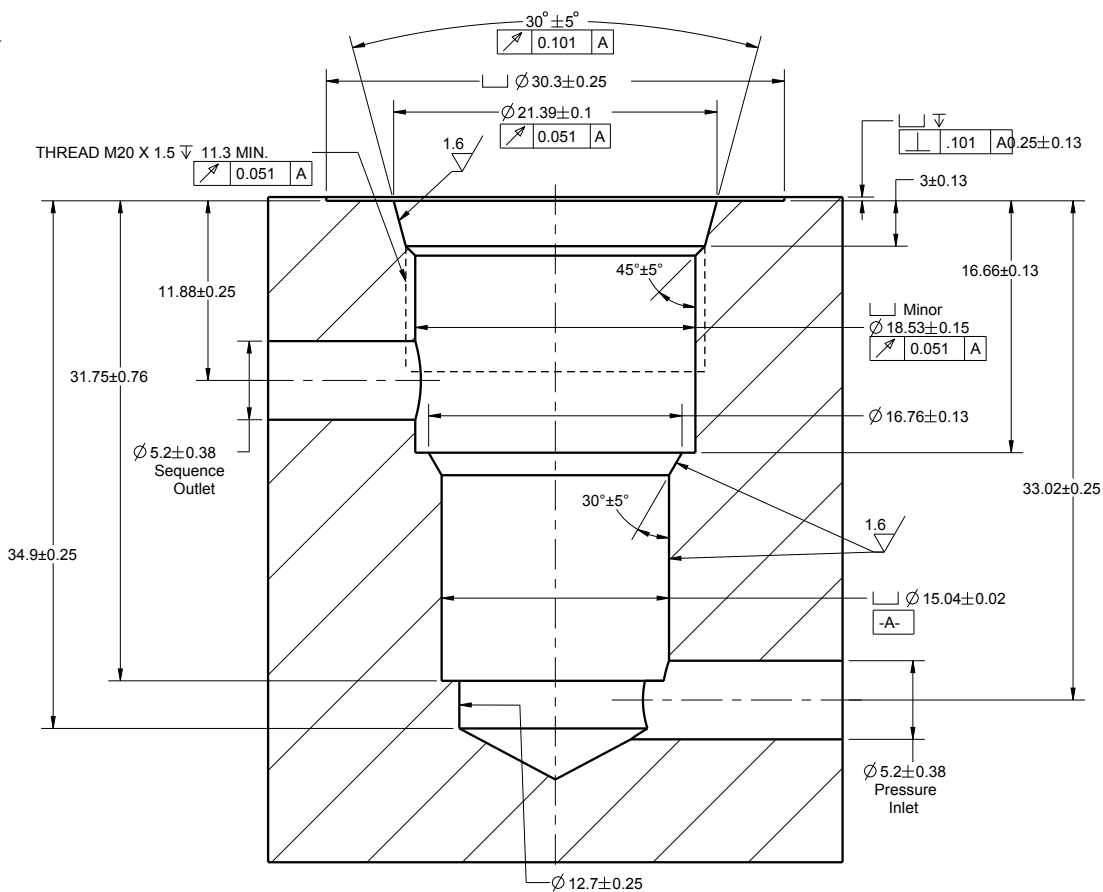
24 HEX TYPICAL
TORQUE TO 48 Nm
(35 FT-LB)

M20 x 1.5
THREADS

27.7

SEQUENCE VALVE
CARTRIDGE

SEQUENCE VALVE CARTRIDGE CAVITY DIMENSIONS FOR MACHINING WITH PORT TOOL



INSTALLATION INSTRUCTIONS



VEKTEK, INC.
1334 E. SIXTH AVE. P.O. BOX 625
EMPORIA, KS. 66801 U.S.A.

| | | | | |
|----------------|--|----------------|------------|----------|
| D | 3337 | RELEASE | JDW | 12/13/17 |
| REV | IN ACCORDANCE WITH ECN | EFFECTIVE DATE | REVISED BY | DATE |
| DRW BY: ROMINE | DRAWING STATUS: Released | | | |
| DATE: 03/23/07 | PRODUCTION APPROVED FOR RELEASED STATUS ONLY | | | |

ASSEMBLIES AFFECTED
47-0400-00
47-0400-01

VALVE, SEQUENCE, CAVITY, METRIC

SIZE
A IS7003

REV
D

1

2

FORM FEG041_IS_SIZE, REV. B

SHEET 1 OF 1