
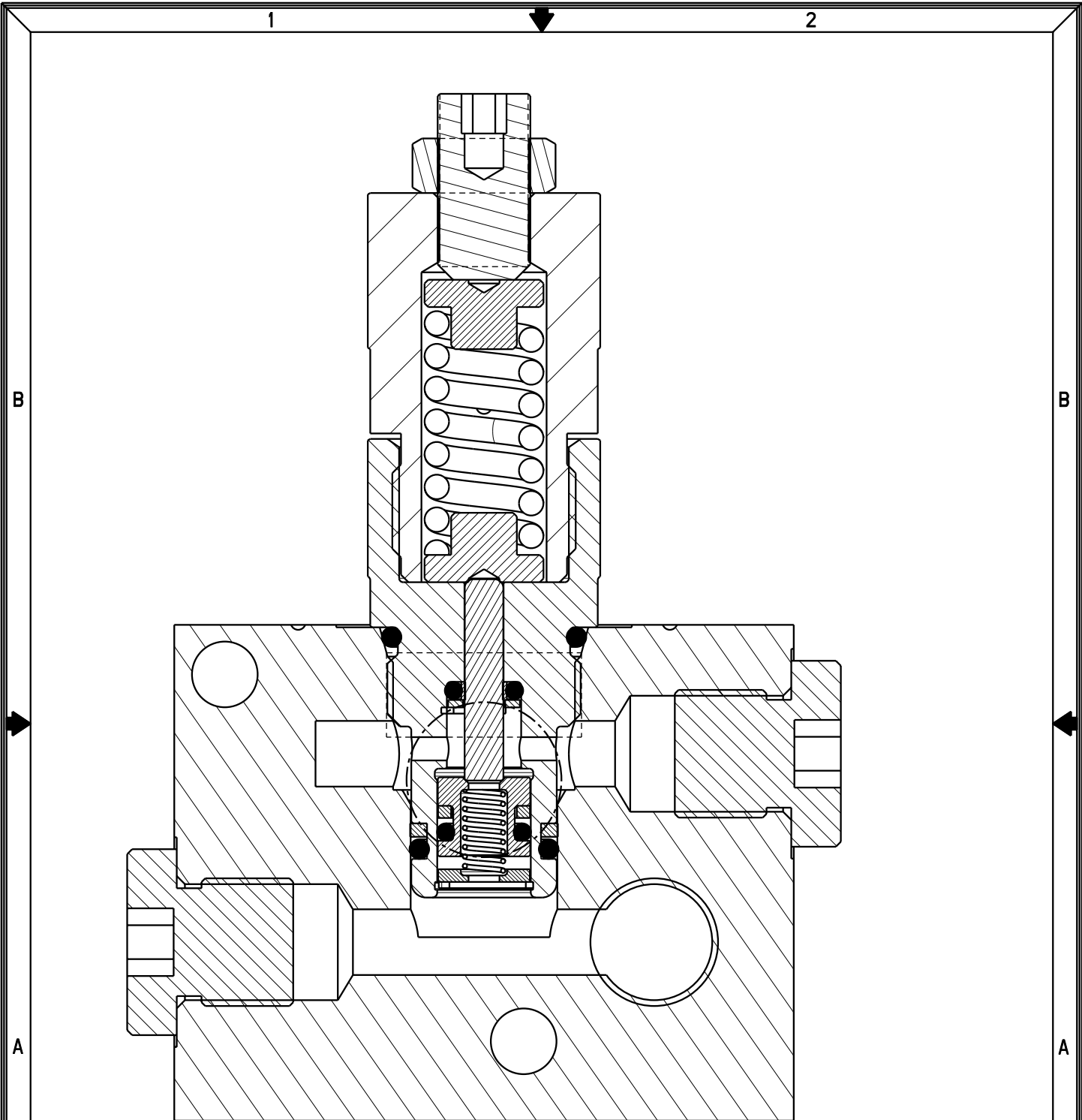



| No. | QTY | PART No. | DESCRIPTION | STD. SEAL KIT | FKM SEAL KIT | SPRING KIT |
|-----|-----|------------|-------------------------------|-----------------|--------------|------------|
| 1 | 1 | 21-4400-35 | SET SCREW, FLAT POINT | NO | NO | NO |
| 2 | 1 | 21-4200-19 | HEX NUT | NO | NO | NO |
| 3 | 1 | N/A | BODY, (NON-REPLACEMENT PART) | NO | NO | NO |
| 4 | 2 | 87-0300-00 | SPRING GUIDE | NO | NO | NO |
| 5 | 1 | 23-3120-05 | SPRING | NO | NO | YES |
| 6 | 1 | N/A | GLAND, (NON-REPLACEMENT PART) | NO | NO | NO |
| 7 | 1 | 87-0100-01 | PLUNGER | NO | NO | NO |
| 8 | 1 | 39-0100-63 | ROD SEAL | YES | YES | NO |
| 9 | 1 | 39-0000-09 | O-RING (STANDARD) | YES | NO | NO |
| | 1 | 39-0510-21 | O-RING (FLUOROCARBON) | NO | YES | NO |
| 10 | 1 | 21-4300-22 | RETAINER | NO | NO | NO |
| 11 | 1 | 23-0100-06 | RETAINING RING | YES | YES | NO |
| 12 | 1 | 87-0100-00 | PISTON | NO | NO | NO |
| 13 | 1 | 39-0100-61 | BU RING | YES | YES | NO |
| 14 | 1 | 39-0000-63 | O-RING | YES | YES | NO |
| 15 | 1 | 23-3100-14 | SPRING | YES | YES | YES |
| 16 | 1 | 87-0300-02 | RETAINER | NO | NO | NO |
| 17 | 1 | 23-0020-15 | RETAINING RING | YES | YES | YES |
| 18 | 1 | 39-0100-62 | BU RING | YES | YES | NO |
| 19 | 1 | 39-0000-65 | O-RING (STANDARD) | YES | NO | NO |
| | 1 | 39-V000-65 | O-RING (FLUOROCARBON) | NO | YES | NO |
| 20 | 1 | 39-0000-64 | O-RING (STANDARD) | YES | NO | NO |
| | 1 | 39-V000-64 | O-RING (FLUOROCARBON) | NO | YES | NO |
| 21 | 1 | 87-0440-03 | MANIFOLD | NO | NO | NO |
| 22 | 3 | 43-0680-06 | 1/4 BSPP MALE PLUG | NO | NO | NO |
| 23 | 2 | 21-5002-00 | COPPER WASHER | NO | NO | NO |
| 24 | 2 | 39-0000-50 | O-RING (STANDARD) | YES | NO | NO |
| | 2 | 39-0510-22 | O-RING (FLUOROCARBON) | NO | YES | NO |
| 25 | 2 | 21-5000-19 | BUTTON HEAD CAP SCREW | NO | NO | NO |
| N/A | N/A | 60-7040-00 | SEAL KIT (STANDARD) | INCLUDED IN KIT | | |
| N/A | N/A | 6V-7040-00 | SEAL KIT (FLUOROCARBON) | | | |
| N/A | N/A | 61-7040-00 | SPRING KIT | | | |

NOTES:
1. LUBRICATE ALL SEALS BEFORE ASSEMBLY.

| | |
|--|--|
| PARTS LIST |  VEKTEK VEKTEK, INC. 1334 E. SIXTH AVE. P.O. BOX 625 EMPORIA, KS. 66801 U.S.A. |
| | ASSEMBLIES AFFECTED 47044002 |
| PARTS LIST, VLV, SEQ, MANF, METRIC SIZE A MPL7015 | REV J SHEET 1 OF 2 |

| | | | | |
|---------|------------------------|--|------------|----------|
| J | 2568 | RELEASE | JDW | 09/11/13 |
| REV | IN ACCORDANCE WITH ECN | EFFECTIVE DATE | REVISED BY | DATE |
| DRW BY: | BUSH | DRAWING STATUS: Released | | |
| DATE: | 7-7-95 | PRODUCTION APPROVED FOR RELEASED STATUS ONLY | | |



| | | |
|-------------------|---|--|
| PARTS LIST |  VEKTEK, INC. 1334 E. SIXTH AVE. P.O. BOX 625 EMPORIA, KS. 66801 U.S.A. | |
| | ASSEMBLIES AFFECTED | PARTS LIST, ASSY, VLV, SEQ, MANF, METRIC |
| 47044002 | SIZE A | MPL7015 |
| | | REV J |
| | | FORM FEG035_PL_ASIZE, REV. A |

| | | | | |
|---------|------------------------|---|------------|----------|
| J | 2568 | RELEASE | JDW | 09/11/13 |
| REV | IN ACCORDANCE WITH ECN | EFFECTIVE DATE | REVISED BY | DATE |
| DRW BY: | BUSH | DRAWING STATUS: Released PRODUCTION APPROVED FOR RELEASED STATUS ONLY | | |
| DATE: | 7-7-95 | | | |

SHEET 2 OF 2