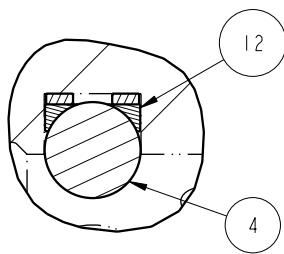
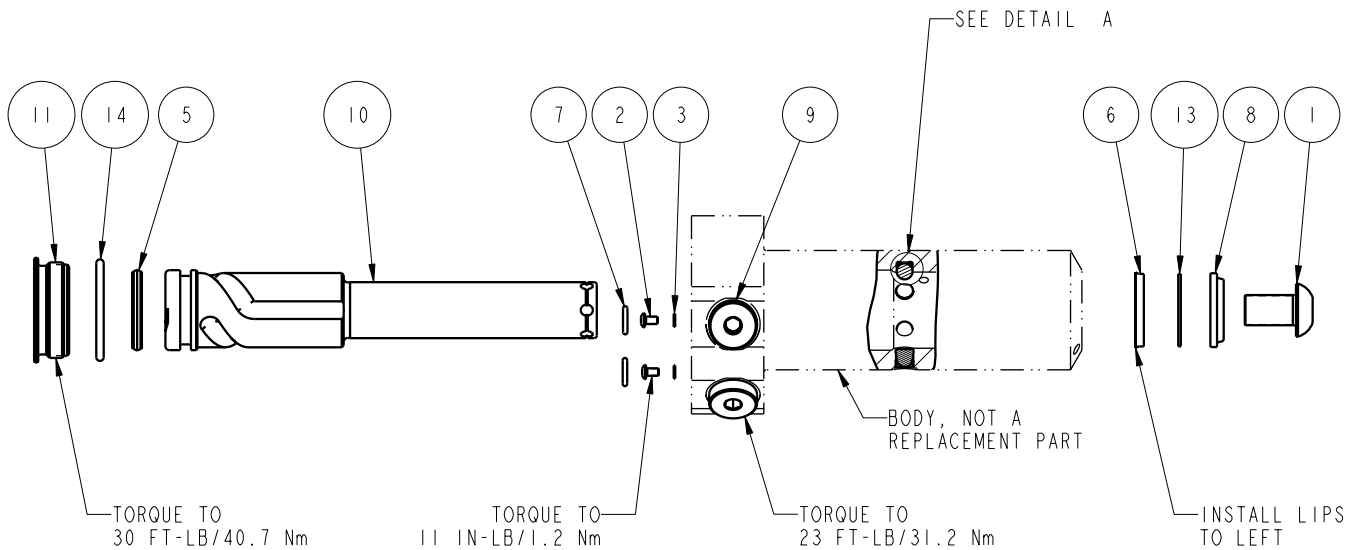



NO	QTY	PART NO	DESCRIPTION	STD SEAL KIT	FKM SEAL KIT
1	1	21500010	SCREW, CAP, BTNH, M12 X 20, ALY		
2	2	21500019	SCREW, CAP, BTNH, M3 X 6, ALY		
3	2	21500200	WASHER		
4	3	23650004	BALL, TUNGSTEN-CARBIDE.250	X	X
5	1	39011030	SEAL,CROWN,1-1/16x1-1/4x5/32	X	39V11030
6	1	39011046	SEAL,BEVEL W/HEEL INSERT,7/8 x1/8 x1-1/4	X	39052003
7	2	39050042	O-RING, (-011)	X	39051025
8	1	39053000	WIPER,SNAP-IN, (7/8)	X	X
9	2	43068006	PLUG, PORT, HOLLOW HEX, G1/4		
10	1	47511314	PLUNGER, SC, HS, 11.6KN, RH, LS		
11	1	81400030	RETAINER, SC, HS, 2600		
12	3	90199958	ASSY,BALLSEAT,SC,2600/5000	X	X
13	1	39F54002	BU RING, (-212 CUSTOM)	X	X
14	1	39V51043	O-RING, (-918)	X	X
N/A	N/A	60414504	KIT, SEAL, STANDARD		
N/A	N/A	6V414504	KIT, SEAL, FKM		



PARTS LIST	 VEKTEK, INC. 1334 E. SIXTH AVE. P.O. BOX 625 EMPORIA, KS. 66801 U.S.A.
	ASSEMBLIES AFFECTED 41421123
PARTS LIST, ASSY, SC, BF, TC, 11.6KN, DA, RH, LS	SIZE A MPLV1443
REV C PRODUCTION APPROVED FOR RELEASED STATUS ONLY	REV C FORM FEG035_PL_ASIZE, REV. B

C	2635	RELEASE	KR	03/26/14
REV	IN ACCORDANCE WITH ECN	EFFECTIVE DATE	REVISED BY	DATE
DRW BY:	DRAWING STATUS: Released			
DATE: 12/3/11	PRODUCTION APPROVED FOR RELEASED STATUS ONLY			