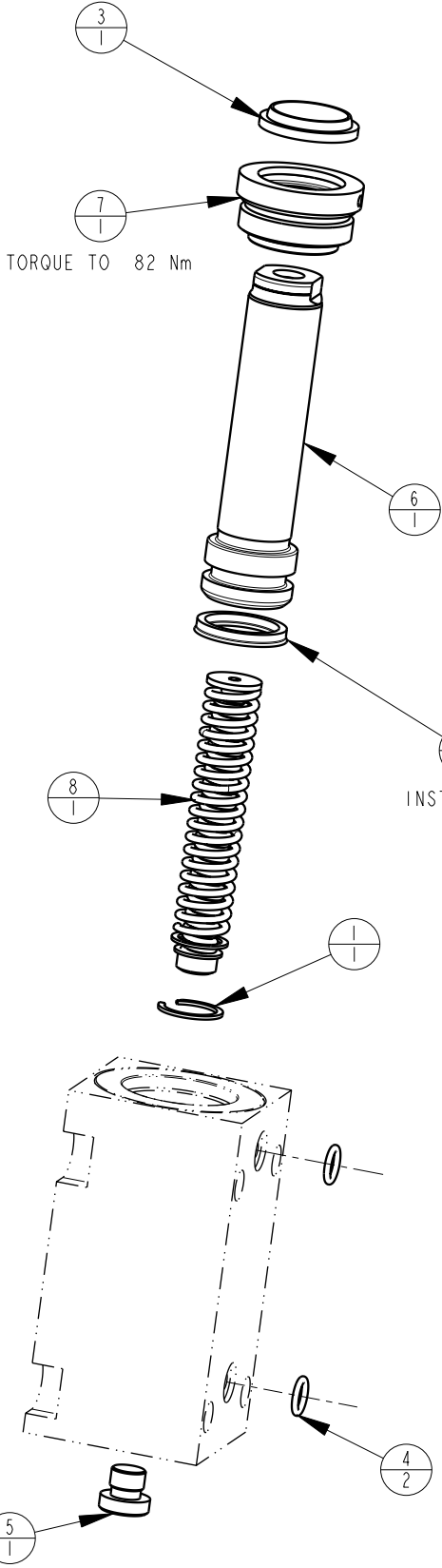


MODEL NO.			MODEL NAME
42111004			ASSY,CYL, BB, MM, 17,8KN, 51 STRK,SA
NO.	QTY	PART NO.	DESCRIPTION
1	1	23050012	SNAP RING, INTERNAL
2	1	39010014	SEAL, BEVEL, 13/16 x 3/32 x 1
3	1	39012008	WIPER,SNAP-IN, (13/16)
4	2	39050042	O-RING, (-011)
5	1	43068004	PLUG, 1/8 BSPP
6	1	48011002	METRIC PISTON, CYL., 51,0 STRK., 17,8 kN
7	1	82031002	GLAND,CYL, 3900 & 17.8 KN
8	1	92060005	SPRING, PAK
N/A	N/A	60210301	KIT, SEAL, BB, 17,8 KN, SA
N/A	N/A	6V210111	KIT, SEAL, BB, 3900/17,8 KN, SA, FKM
N/A	N/A	61210313	KIT, SPRING, BB, 17,8 KN




TORQUE TO 82 Nm

INSTALL LIPS DOWN

3. SPRING PAK AND RETAINING RING ARE INCLUDED IN THE SPRING KIT.
2. ALL SEALS, O-RINGS, AND WIPERS ARE INCLUDED IN THE STANDARD OR FKM SEAL KIT.
1. APPLY LUBRICANT TO ALL SEALS PRIOR TO ASSEMBLY (DO NOT USE SILICONE TYPE LUBRICANTS).

NOTE:

<b>PARTS LIST</b>	 VEKTEK, INC. 1334 E. SIXTH AVE. P.O. BOX 625 EMPORIA, KS. 66801 U.S.A.
	<b>PARTS LIST, BB, MM, 17,8 KN, SA</b>
ASSEMBLIES AFFECTED 42-1110-04	SIZE A <b>MPLV2153</b>
FORM FEG035_PL_ASIZE, REV. B	

B	2625	RELEASE	GAR	2/28/14
REV	IN ACCORDANCE WITH ECN	EFFECTIVE DATE	REVISED BY	DATE
DRW BY:	G. ROMINE	<b>DRAWING STATUS: Released</b>		
DATE:	11/19/07	PRODUCTION APPROVED FOR RELEASED STATUS ONLY		

SHEET 1 OF 1