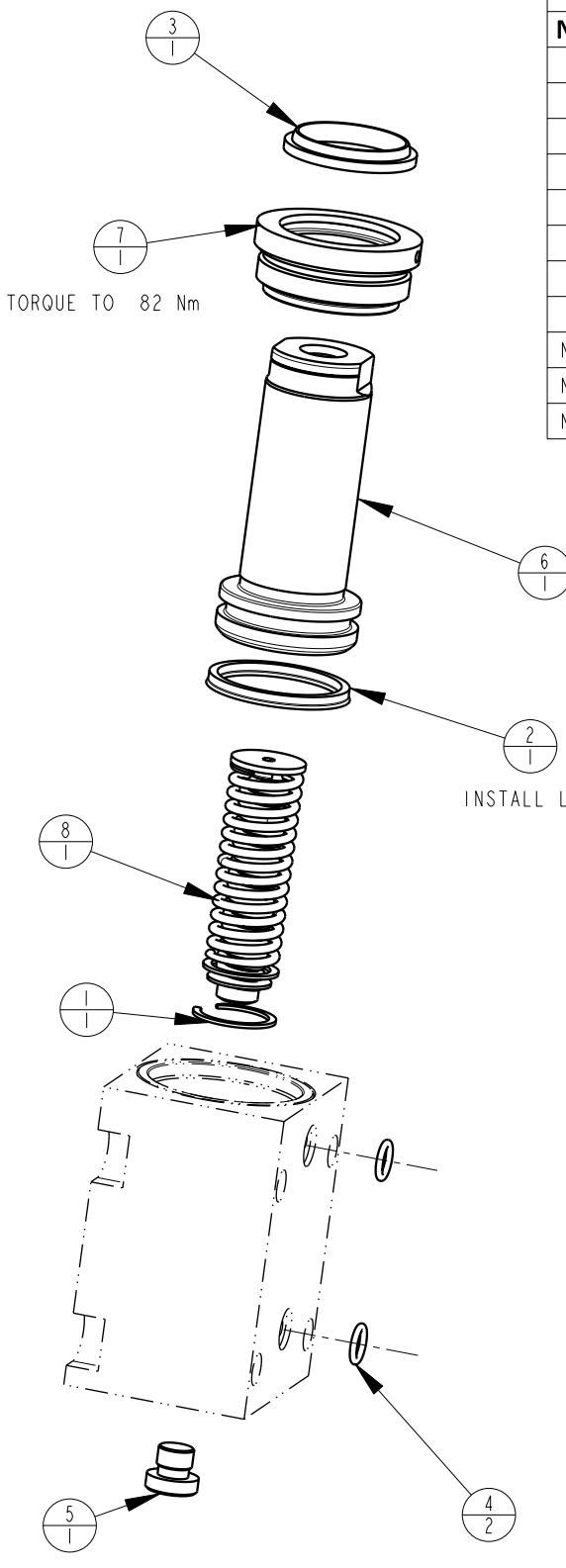



MODEL NO.			MODEL NAME
42111009			ASSY,CYL, BB, MM, 39,9KN, 38,1 STRK,SA
NO.	QTY	PART NO.	DESCRIPTION
1	1	23050013	SNAP RING, INTERNAL
2	1	39011028	SEAL, BEVEL, 1-5/16 X 3/32 X 1-1/2
3	1	39050020	WIPER,SNAP-IN, (1-1/8)
4	2	39050042	O-RING, (-011)
5	1	43068004	PLUG, 1/8 BSPP
6	1	48011505	PISTON, CYL., 39,9 kN, 38,1 STRK
7	1	82031501	GLAND, CYL, 8800 & 39.9 KN
8	1	92060008	SPRING, PAK
N/A	N/A	60210302	KIT, SEAL, BB, 39,9 KN, SA
N/A	N/A	6V210112	KIT, SEAL, BB, 8800/39,9 KN, SA, FKM
N/A	N/A	46100042	KIT, SPRING, BB, 42111009



3. SPRING PAK AND RETAINING RING ARE INCLUDED IN THE SPRING KIT.
2. ALL SEALS, O-RINGS, AND WIPERS ARE INCLUDED IN THE STANDARD OR FKM SEAL KIT.
1. APPLY LUBRICANT TO ALL SEALS PRIOR TO ASSEMBLY (DO NOT USE SILICONE TYPE LUBRICANTS).

NOTE:

<b>PARTS LIST</b>	 VEKTEK, INC. 1334 E. SIXTH AVE. P.O. BOX 625 EMPORIA, KS. 66801 U.S.A.
	ASSEMBLIES AFFECTED 42-1110-09
<b>PARTS LIST, BB, MM, 39,9 KN, SA</b>	
SIZE A	MPLV2158
REV B	

B	2625	RELEASE	GAR	2/28/14
REV	IN ACCORDANCE WITH ECN	EFFECTIVE DATE	REVISED BY	DATE
DRW BY:	G. ROMINE	<b>DRAWING STATUS: Released</b>		
DATE:	02/29/08	PRODUCTION APPROVED FOR RELEASED STATUS ONLY		