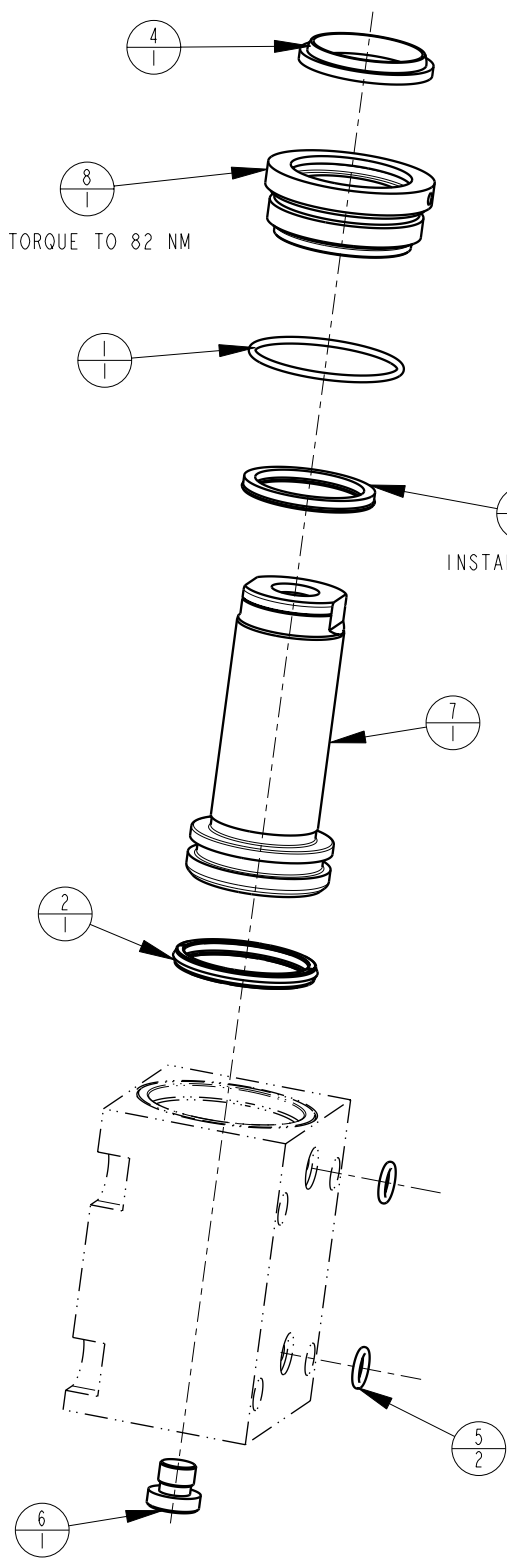


| MODEL NO. |     |          | MODEL NAME                             |
|-----------|-----|----------|----------------------------------------|
| 42112009  |     |          | ASSY,CYL, BB, MM, 39,9KN, 38,1 STRK,DA |
| NO.       | QTY | PART NO. | DESCRIPTION                            |
| 1         | 1   | 39001013 | O-RING, (-029)                         |
| 2         | 1   | 39011031 | SEAL,CROWN,1-5/16x1-1/2x5/32           |
| 3         | 1   | 39011048 | SEAL, LL, (1-1/8 X 1/8 X 1/8 X 1-3/8)  |
| 4         | 1   | 39050020 | WIPER,SNAP-IN, (1-1/8)                 |
| 5         | 2   | 39050042 | O-RING, (-011)                         |
| 6         | 1   | 43068004 | PLUG, 1/8 BSPP                         |
| 7         | 1   | 48011505 | PISTON, CYL., 39,9 kN, 38,1 STRK       |
| 8         | 1   | 82031501 | GLAND, CYL, 8800 & 39.9 KN             |
| N/A       | N/A | 60210402 | KIT, SEAL, BB, 39,9 KN, DA             |
| N/A       | N/A | 6V210201 | KIT, SEAL, BB, 8800/39,9 KN, DA, FKM   |




TORQUE TO 82 NM

INSTALL LIPS DOWN

- 2. ALL SEALS, O-RINGS, AND WIPERS ARE INCLUDED IN THE STANDARD OR FKM SEAL KIT.
- 1. APPLY LUBRICANT TO ALL SEALS PRIOR TO ASSEMBLY (DO NOT USE SILICONE TYPE LUBRICANTS).

NOTE:

|                                   |                                                                                                                                                                       |
|-----------------------------------|-----------------------------------------------------------------------------------------------------------------------------------------------------------------------|
| <b>PARTS LIST</b>                 | <br>VEKTEK, INC.<br>1334 E. SIXTH AVE. P.O. BOX 625<br>EMPORIA, KS. 66801 U.S.A. |
|                                   | <b>PARTS LIST, BB, MM, 39,9 KN, DA</b><br><br>SIZE A <b>MPLV2166</b> REV B                                                                                            |
| ASSEMBLIES AFFECTED<br>42-1120-09 | FORM FEG035_PL_ASIZE, REV. B                                                                                                                                          |

|         |                        |                                              |            |         |
|---------|------------------------|----------------------------------------------|------------|---------|
| B       | 2625                   | RELEASE                                      | GAR        | 2/28/14 |
| REV     | IN ACCORDANCE WITH ECN | EFFECTIVE DATE                               | REVISED BY | DATE    |
| DRW BY: | G. ROMINE              | <b>DRAWING STATUS: Released</b>              |            |         |
| DATE:   | 11/19/07               | PRODUCTION APPROVED FOR RELEASED STATUS ONLY |            |         |