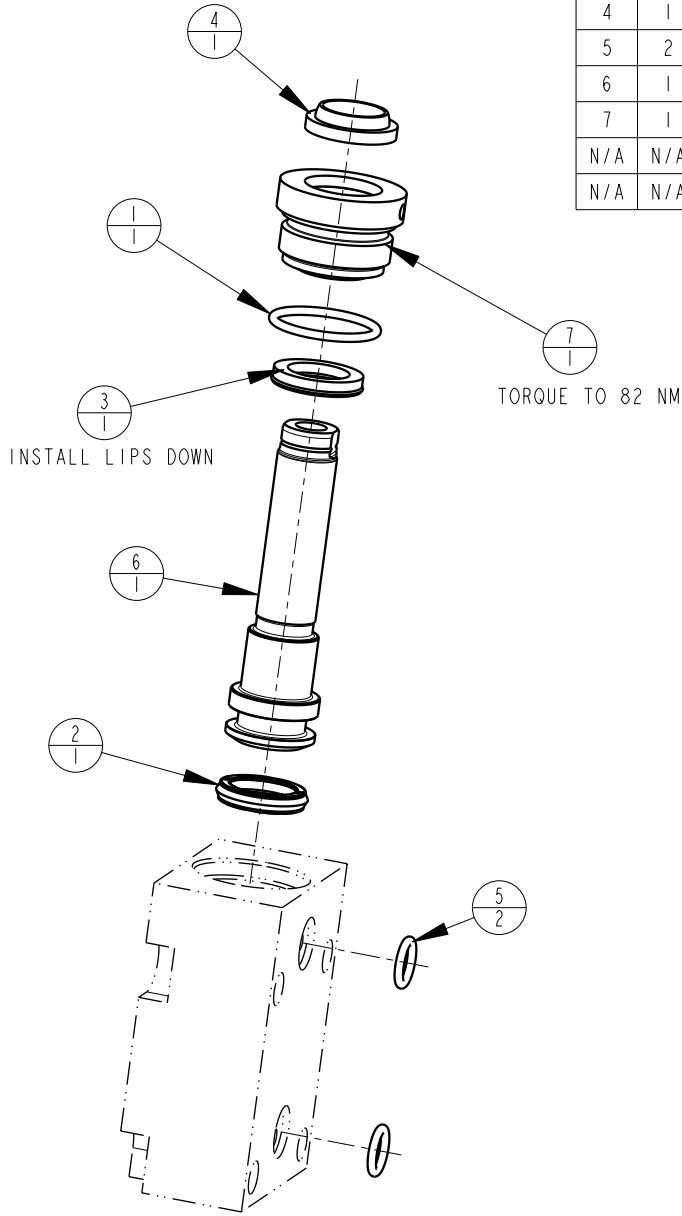


MODEL NO.			MODEL NAME
42112001			ASSY,CYL, BB, MM, 10,1KN, 19 STRK,DA
NO.	QTY	PART NO.	DESCRIPTION
1	1	39000013	O-RING, (-019)
2	1	39010016	SEAL,CROWN,9/16x3/4x5/32
3	1	39010019	SEAL, LL, (1/2 X 1/8 X 1/8 X 3/4)
4	1	39012011	WIPER,SNAP-IN, (1/2)
5	2	39050042	O-RING, (-011)
6	1	48010800	PISTON, CYL, BB, 10.1KN, 19 STRK
7	1	82030802	GLAND, CYL, BB, DA, 2200
N/A	N/A	60210400	KIT, SEAL, BB, 10,1 KN, DA
N/A	N/A	6V210202	KIT, SEAL, BB, 2200/10,1 KN, DA, FKM



2. ALL SEALS, O-RINGS, AND WIPERS ARE INCLUDED IN THE STANDARD OR FKM SEAL KIT.
1. APPLY LUBRICANT TO ALL SEALS PRIOR TO ASSEMBLY (DO NOT USE SILICONE TYPE LUBRICANTS).

NOTE:

### PARTS LIST



VEKTEK, INC.  
1334 E. SIXTH AVE. P.O. BOX 625  
EMPORIA, KS. 66801 U.S.A.

ASSEMBLIES AFFECTED  
42-1120-01

PARTS LIST, BB, MM, 10,1 KN, DA

SIZE A  
MPLV2172

REV B

SHEET 1 OF 1

B	2625	RELEASE	GAR	2/28/14
REV	IN ACCORDANCE WITH ECN	EFFECTIVE DATE	REVISED BY	DATE
DRW BY:	G. ROMINE	<b>DRAWING STATUS: Released</b>		
DATE:	11/19/07	PRODUCTION APPROVED FOR RELEASED STATUS ONLY		

FORM FEG035\_PL\_ASIZE, REV. B