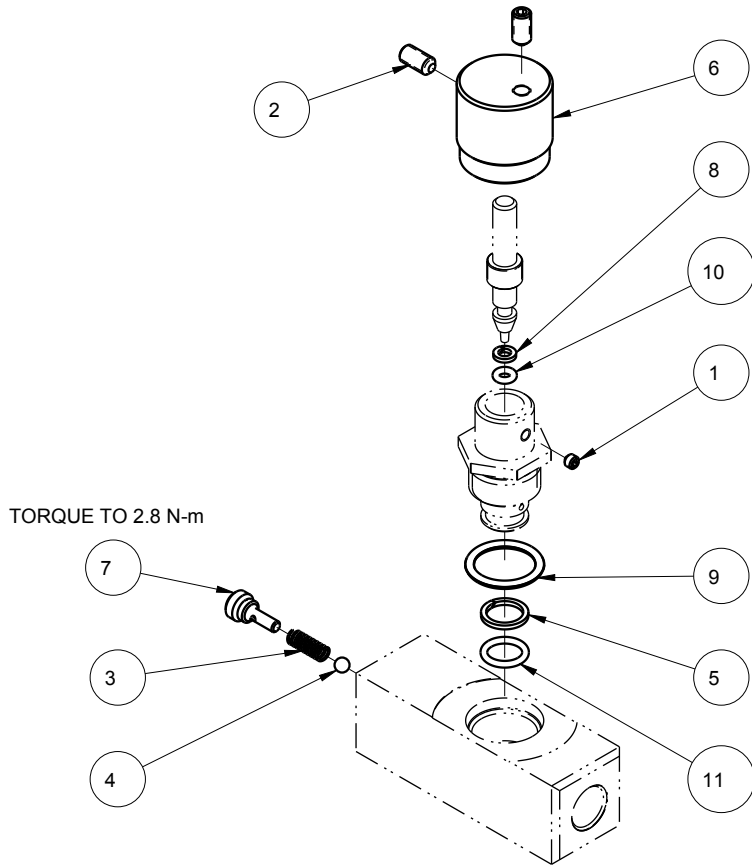



MODEL NO.			MODEL NAME	
MPLV4701			ASSY, FLOW CONTROL, METRIC	
NO.	QTY	PART NO.	DESCRIPTION	SEAL KIT
1	1	21440022	SHSS, CUP POINT	NO
2	2	21500315	SCREW, SET, CUP PT, M5 X .8-6g X 10	NO
3	1	23310014	SPRING, COMPRESSION	NO
4	1	23600014	BALL, STEEL, ALLOY, .156	NO
5	1	39054010	BU RING,(-012)	YES
6	1	87000003	KNOB, FLOW CONTROL	NO
7	1	87000049	PIN, GUIDE, SPRING	NO
8	1	39F54018	BU RING,(-006)	YES
9	1	39V00036	O-RING, (-908)	YES
10	1	39V51040	O-RING, (-006)	YES
11	1	39V51044	O-RING, (-012)	YES
N/A	N/A	6V702000	KIT, SEAL, FLOW CONTROL, FKM	NOTED



NOTES:
 1. APPLY LUBRICANT TO ALL SEALS PRIOR TO INSTALLATION.
 2. DO NOT USE SILICONE TYPE LUBRICANTS.

PARTS LIST		 VEKTEK, INC. 1334 E. SIXTH AVE. P.O. BOX 625 EMPORIA, KS. 66801 U.S.A.	
ASSEMBLIES AFFECTED		*****	
47020014		SIZE A	
L7020014		MPLV4701	
		REV D	

D	3320	RELEASE	GAR	10/17/17
REV	IN ACCORDANCE WITH ECN	EFFECTIVE DATE	REVISED BY	DATE
DRW BY: K. ROEMER		DRAWING STATUS: Released		
DATE: 08/10/07		PRODUCTION APPROVED FOR RELEASED STATUS ONLY		

SHEET 1 OF 1