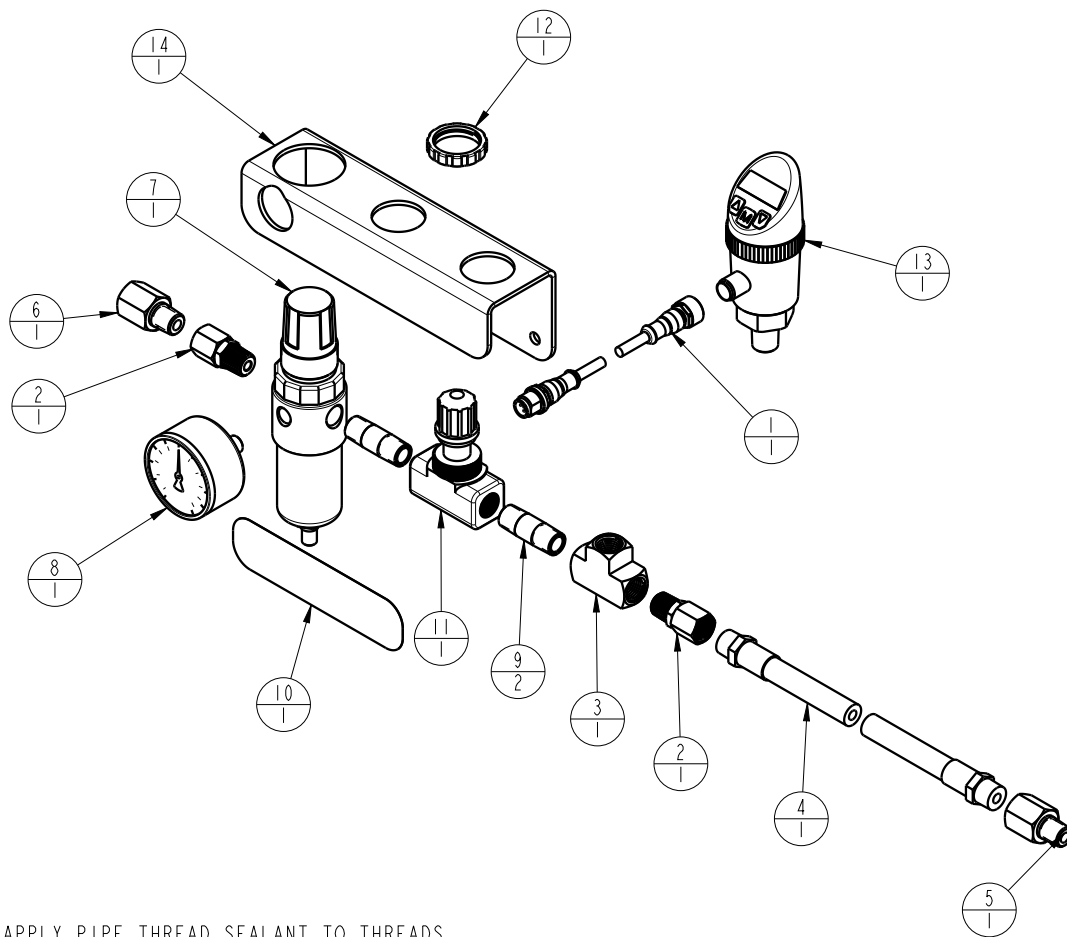



NO	QTY	PART NO	DESCRIPTION
1	1	27742203	CABLE, M12 MALE, M12 FEMALE, 5 POLE, 5M
2	2	30013444	CONNECTOR, SWIVEL, M, F, 1/4 NPT
3	1	30244444	TEE, BRANCH, BRASS, 1/4 NPT
4	1	35355400	HOSE, AIR, 1/4 X 1/2 X 15'
5	1	43080005	ADAPTER, MALE 1/4 BSPT - FEM 1/4 NPT
6	1	43080006	ADAPTER, MALE 1/4 NPT - FEM 1/4 BSPT
7	1	50044001	FILTER-REGULATOR, 25 PSI
8	1	50201003	GAUGE, PRESS, AIR, 30 PSI, 200 KPa
9	2	50603001	NIPPLE, PIPE, 1/4 NPT X 1.5, BRASS
10	1	67040090	LABEL, AIR SENSING CONTROL KIT
11	1	70200330	VALVE, FLOW CONTROL, 1/4 NPT
12	1	70200331	NUT, PANEL, FC, 1-20
13	1	70740370	SWITCH, PRESSURE, ELEC, 150 PSI
14	1	85080000	MOUNT, MODULE, CONTROL, AIR
N/A	N/A	1S5003	PNEU CONFIRMATION VLV APP SETUP GUIDE



1. APPLY PIPE THREAD SEALANT TO THREADS.
2. PROGRAM PRESSURE SWITCH I.A.W. 1S7075 WITH THE FOLLOWING EXCEPTIONS:
  - A. CHANGE OUTPUT 1 (Ou1) TO Hno (NORMALLY OPEN).
  - B. CHANGE UNITS (uni) TO KPA.
  - C. CHANGE ANALOG OUTPUT (OuA) TO OFF.
  - D. CHANGE SET POINT 1 (SPI) TO 100 KPa.
  - E. CHANGE RESET POINT 1 (RPI) TO 70 KPa

<b>PARTS LIST</b>	 VEKTEK, INC. 1334 E. SIXTH AVE. P.O. BOX 625 EMPORIA, KS. 66801 U.S.A.
	<b>PARTS LIST, AIR SENSING CONTROL</b>  SIZE A <b>MPLV5005</b> REV A

A	3470	RELEASE	KR	07/12/18
REV	IN ACCORDANCE WITH ECN	EFFECTIVE DATE	REVISED BY	DATE
DRW BY:	KR	<b>DRAWING STATUS: Released</b> PRODUCTION APPROVED FOR RELEASED STATUS ONLY		
DATE:	05/14/18			

ASSEMBLIES AFFECTED  
45-0824-00

SHEET 1 OF 1