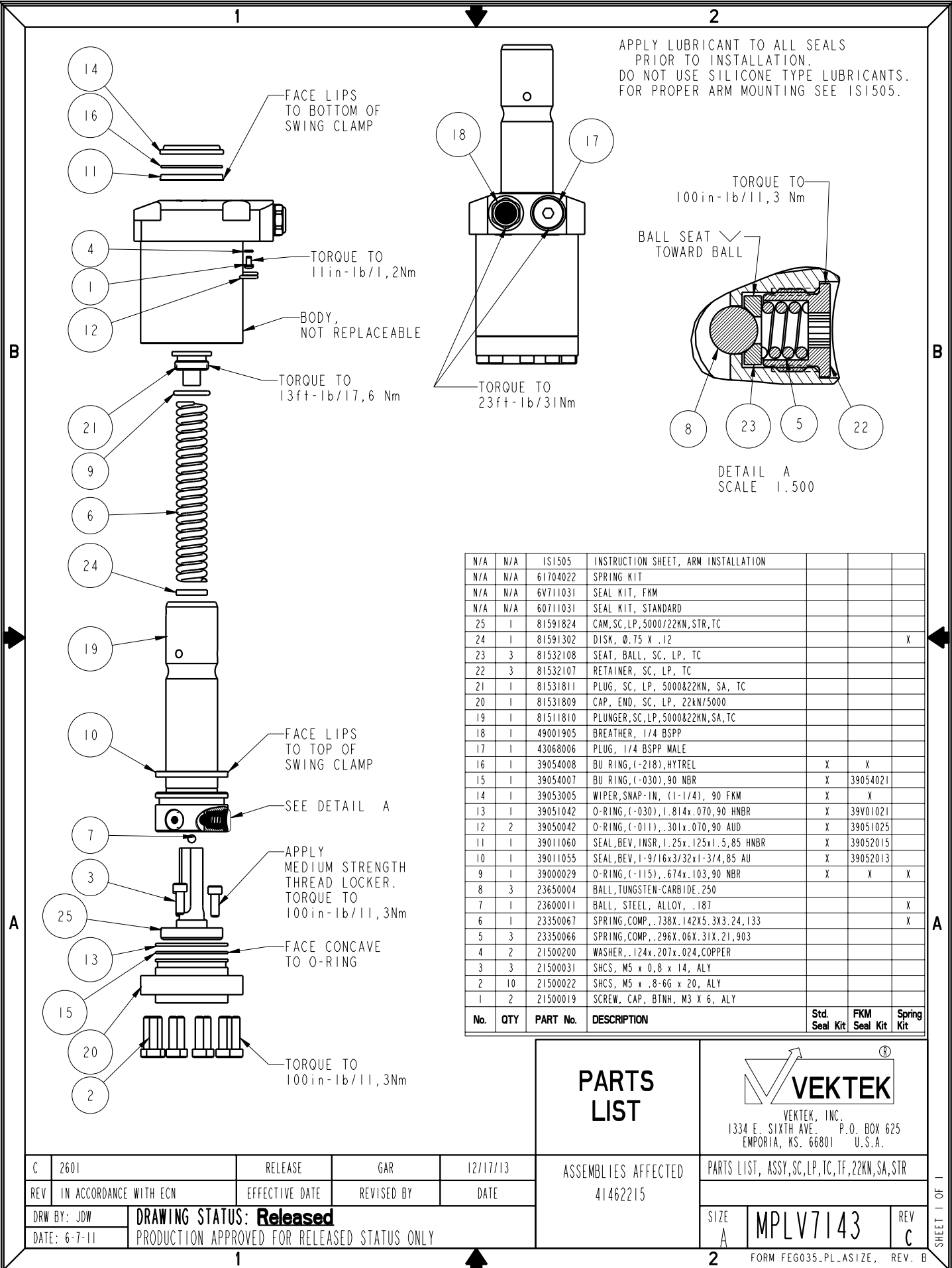



APPLY LUBRICANT TO ALL SEALS
PRIOR TO INSTALLATION.
DO NOT USE SILICONE TYPE LUBRICANTS.
FOR PROPER ARM MOUNTING SEE IS1505.



No.	QTY	PART No.	DESCRIPTION	Std. Seal Kit	FKM Seal Kit	Spring Kit
N/A	N/A	IS1505	INSTRUCTION SHEET, ARM INSTALLATION			
N/A	N/A	61704022	SPRING KIT			
N/A	N/A	6V711031	SEAL KIT, FKM			
N/A	N/A	60711031	SEAL KIT, STANDARD			
25	1	81591824	CAM, SC, LP, 5000/22KN, STR, TC			
24	1	81591302	DISK, 0.75 X .12			X
23	3	81532108	SEAT, BALL, SC, LP, TC			
22	3	81532107	RETAINER, SC, LP, TC			
21	1	81531811	PLUG, SC, LP, 5000&22KN, SA, TC			
20	1	81531809	CAP, END, SC, LP, 22KN/5000			
19	1	81511810	PLUNGER, SC, LP, 5000&22KN, SA, TC			
18	1	49001905	BREATHER, 1/4 BSPP			
17	1	43068006	PLUG, 1/4 BSPP MALE			
16	1	39054008	BU RING, (-218), HYTREL	X	X	
15	1	39054007	BU RING, (-030), 90 NBR	X	39054021	
14	1	39053005	WIPER, SNAP-IN, (1-1/4), 90 FKM	X	X	
13	1	39051042	O-RING, (-030), 1.814x.070, 90 HNBR	X	39V01021	
12	2	39050042	O-RING, (-011), .301x.070, 90 AUD	X	39051025	
11	1	39011060	SEAL, BEV, INSR, 1.25x.125x1.5, 85 HNBR	X	39052015	
10	1	39011055	SEAL, BEV, I-9/16x3/32x1-3/4, 85 AU	X	39052013	
9	1	39000029	O-RING, (-115), .674x.103, 90 NBR	X	X	X
8	3	23650004	BALL, TUNGSTEN-CARBIDE, 250			
7	1	23600011	BALL, STEEL, ALLOY, .187			X
6	1	23350067	SPRING, COMP., .738X.142X5.3X3.24, 133			X
5	3	23350066	SPRING, COMP., .296X.06X.31X.21, 903			
4	2	21500200	WASHER, .124x.207x.024, COPPER			
3	3	21500031	SHCS, M5 x 0.8 x 14, ALY			
2	10	21500022	SHCS, M5 x .8-66 x 20, ALY			
1	2	21500019	SCREW, CAP, BTNH, M3 X 6, ALY			

PARTS LIST

ASSEMBLIES AFFECTED
41462215



VEKTEK, INC.
1334 E. SIXTH AVE. P.O. BOX 625
EMPORIA, KS. 66801 U.S.A.

C	2601	RELEASE	GAR	12/17/13
REV	IN ACCORDANCE WITH ECN	EFFECTIVE DATE	REVISED BY	DATE
DRW BY:	JDW	DRAWING STATUS: Released		
DATE:	6-7-11	PRODUCTION APPROVED FOR RELEASED STATUS ONLY		

SIZE
A

MPLV7143

REV
C

FORM FEG035_PL_ASIZE, REV. B

