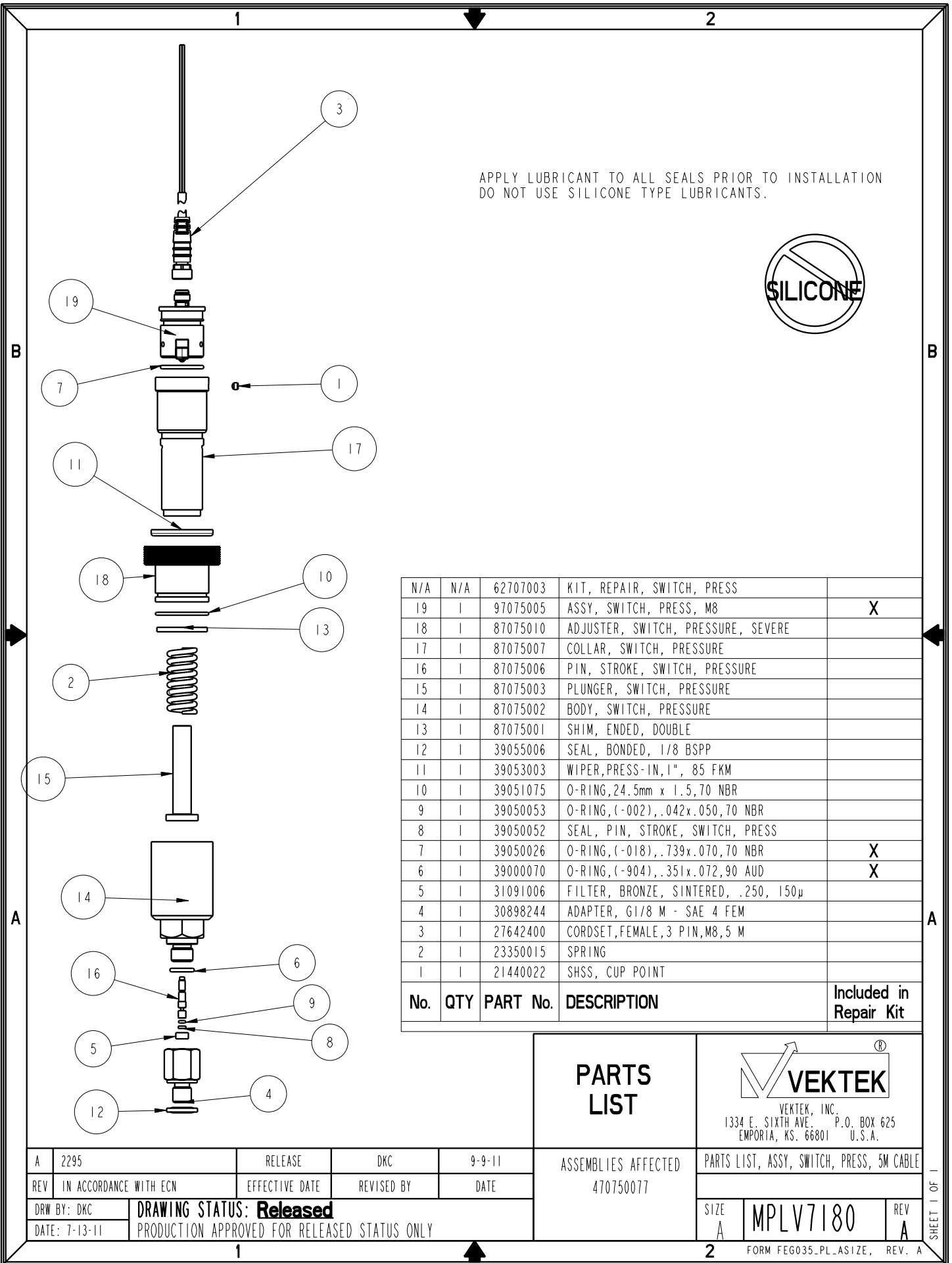


APPLY LUBRICANT TO ALL SEALS PRIOR TO INSTALLATION  
DO NOT USE SILICONE TYPE LUBRICANTS.



No.	QTY	PART No.	DESCRIPTION	Included in Repair Kit
N/A	N/A	62707003	KIT, REPAIR, SWITCH, PRESS	
19	1	97075005	ASSY, SWITCH, PRESS, M8	X
18	1	87075010	ADJUSTER, SWITCH, PRESSURE, SEVERE	
17	1	87075007	COLLAR, SWITCH, PRESSURE	
16	1	87075006	PIN, STROKE, SWITCH, PRESSURE	
15	1	87075003	PLUNGER, SWITCH, PRESSURE	
14	1	87075002	BODY, SWITCH, PRESSURE	
13	1	87075001	SHIM, ENDED, DOUBLE	
12	1	39055006	SEAL, BONDED, 1/8 BSPP	
11	1	39053003	WIPER, PRESS-IN, 1", 85 FKM	
10	1	39051075	O-RING, 24.5mm x 1.5, 70 NBR	
9	1	39050053	O-RING, (-002), .042x.050, 70 NBR	
8	1	39050052	SEAL, PIN, STROKE, SWITCH, PRESS	
7	1	39050026	O-RING, (-018), .739x.070, 70 NBR	X
6	1	39000070	O-RING, (-904), .351x.072, 90 AUD	X
5	1	31091006	FILTER, BRONZE, SINTERED, .250, 150µ	
4	1	30898244	ADAPTER, G1/8 M - SAE 4 FEM	
3	1	27642400	CORDSET, FEMALE, 3 PIN, M8, 5 M	
2	1	23350015	SPRING	
1	1	21440022	SHSS, CUP POINT	

**PARTS LIST**



VEKTEK, INC.  
1334 E. SIXTH AVE. P.O. BOX 625  
EMPORIA, KS. 66801 U.S.A.

ASSEMBLIES AFFECTED  
470750077

PARTS LIST, ASSY, SWITCH, PRESS, 5M CABLE

SIZE  
A MPLV7180

REV  
A

SHEET 1 OF 1

A	2295	RELEASE	DKC	9-9-11
REV	IN ACCORDANCE WITH ECN	EFFECTIVE DATE	REVISED BY	DATE
DRW BY:	DKC	<b>DRAWING STATUS: Released</b>		
DATE:	7-13-11	PRODUCTION APPROVED FOR RELEASED STATUS ONLY		