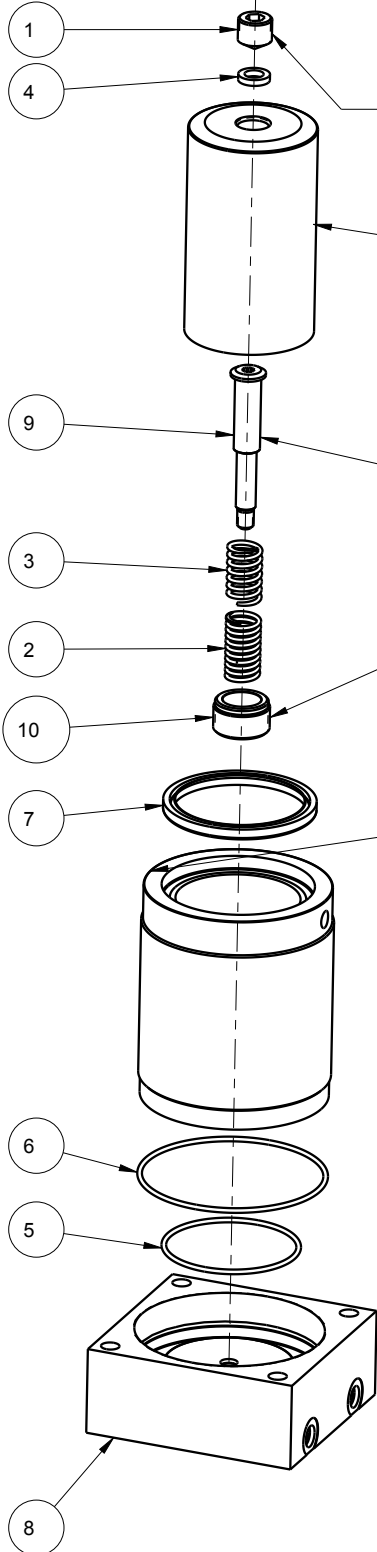


THIS IS A TWO PAGE PARTS LIST
THIS FIRST PAGE APPLIES TO
ASSEMBLIES OF REVISION K AND LATER



UNIT MUST BE HYDRAULICALLY "LOCKED"
TO LOOSEN OR TIGHTEN THIS SET SCREW.
APPLY MEDIUM STRENGTH THREAD LOCKER (BLUE) TO THREADS.
TIGHTEN UNTIL SET SCREW CONTACTS THE PLUNGER SEALING GASKET.

PLUNGER
NON-REPLACEMENT PART

APPLY LUBRICANT TO ALL SEALS PRIOR TO INSTALLATION.
DO NOT USE SILICONE TYPE LUBRICANTS.

APPLY MEDIUM STRENGTH
THREAD LOCKER (BLUE) TO THREADS.
TIGHTEN TO 12 FT-LBS TORQUE.

APPLY HIGH STRENGTH
THREAD LOCKER (RED) TO THREADS.
TIGHTEN TO 30 FT-LBS TORQUE.

BODY/SLEEVE ASSY
NON-REPLACEMENT PART
TIGHTEN TO 600 FT-LBS TORQUE

NO	QTY	PART NO	DESCRIPTION	STD SEAL KIT	SPRING KIT
1	1	21440013	SHSS, CONE POINT		
2	1	23314003	SPRING, COMPRESSION		X
3	1	23314004	SPRING, COMPRESSION		X
4	1	39000052	GASKET, (-205)	X	X
5	1	39001025	O-RING, (-150)	X	
6	1	39001027	O-RING, (-155)	X	
7	1	39011072	WIPER,PRESS-IN, (2-7/8)	X	
8	1	81042900	BASE, WS, SPR & AA, 20000		
9	1	81042902	STUD, SPRING, WS, AA, 20000		
10	1	81042903	RETAINER, SPR, WS, AA&SPR, 20000		
N/A	N/A	60100529	KIT, SEAL	NOTED	N/A
N/A	N/A	61100030	KIT, SPRING	N/A	NOTED

PARTS LIST



VEKTEK, INC.
1334 E. SIXTH AVE. P.O. BOX 625
EMPORIA, KS. 66801 U.S.A.

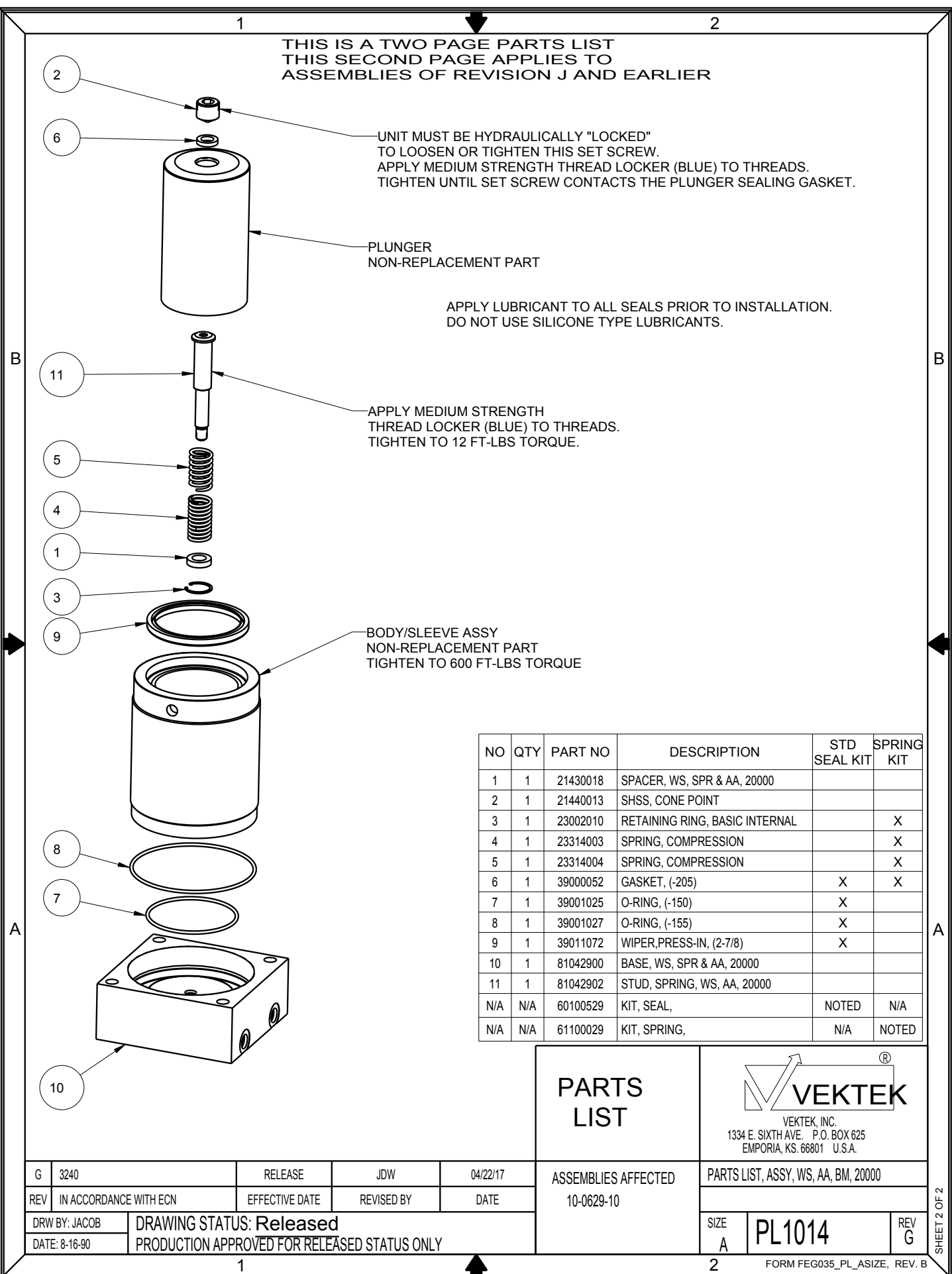
G	3240	RELEASE	JDW	04/22/17
REV	IN ACCORDANCE WITH ECN	EFFECTIVE DATE	REVISED BY	DATE
DRW BY:	JACOB	DRAWING STATUS: Released		
DATE:	8-16-90	PRODUCTION APPROVED FOR RELEASED STATUS ONLY		

ASSEMBLIES AFFECTED
10-0629-10

PARTS LIST, ASSY, WS, AA, BM, 20000

SIZE A PL1014 REV G

THIS IS A TWO PAGE PARTS LIST
THIS SECOND PAGE APPLIES TO
ASSEMBLIES OF REVISION J AND EARLIER



UNIT MUST BE HYDRAULICALLY "LOCKED"
TO LOOSEN OR TIGHTEN THIS SET SCREW.
APPLY MEDIUM STRENGTH THREAD LOCKER (BLUE) TO THREADS.
TIGHTEN UNTIL SET SCREW CONTACTS THE PLUNGER SEALING GASKET.


PLUNGER
NON-REPLACEMENT PART

APPLY LUBRICANT TO ALL SEALS PRIOR TO INSTALLATION.
DO NOT USE SILICONE TYPE LUBRICANTS.

APPLY MEDIUM STRENGTH
THREAD LOCKER (BLUE) TO THREADS.
TIGHTEN TO 12 FT-LBS TORQUE.

BODY/SLEEVE ASSY
NON-REPLACEMENT PART
TIGHTEN TO 600 FT-LBS TORQUE

NO	QTY	PART NO	DESCRIPTION	STD SEAL KIT	SPRING KIT
1	1	21430018	SPACER, WS, SPR & AA, 20000		
2	1	21440013	SHSS, CONE POINT		
3	1	23002010	RETAINING RING, BASIC INTERNAL		X
4	1	23314003	SPRING, COMPRESSION		X
5	1	23314004	SPRING, COMPRESSION		X
6	1	39000052	GASKET, (-205)	X	X
7	1	39001025	O-RING, (-150)	X	
8	1	39001027	O-RING, (-155)	X	
9	1	39011072	WIPER,PRESS-IN, (2-7/8)	X	
10	1	81042900	BASE, WS, SPR & AA, 20000		
11	1	81042902	STUD, SPRING, WS, AA, 20000		
N/A	N/A	60100529	KIT, SEAL,	NOTED	N/A
N/A	N/A	61100029	KIT, SPRING,	N/A	NOTED

<h2>PARTS LIST</h2>	
	<small>VEKTEK, INC. 1334 E. SIXTH AVE. P.O. BOX 625 EMPORIA, KS. 66801 U.S.A.</small>
ASSEMBLIES AFFECTED	PARTS LIST, ASSY, WS, AA, BM, 20000
10-0629-10	
SIZE A	PL1014
REV G	

G	3240	RELEASE	JDW	04/22/17
REV	IN ACCORDANCE WITH ECN	EFFECTIVE DATE	REVISED BY	DATE
DRW BY: JACOB	DRAWING STATUS: Released PRODUCTION APPROVED FOR RELEASED STATUS ONLY			
DATE: 8-16-90				