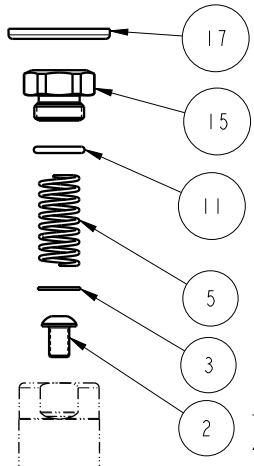
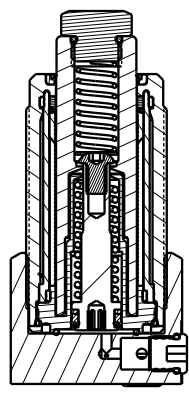


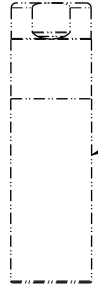


SEE IS1023 FOR SERVICE INSTRUCTIONS.
LUBRICATE ALL SEALS WITH CLEAN HYDRAULIC OIL
PRIOR TO ASSEMBLY.
DO NOT USE SILICONE BASED LUBRICANTS.

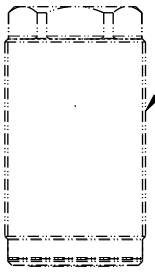


APPLY MEDIUM STRENGTH
THREAD LOCKER (BLUE)
TORQUE TO 16 FT-LB

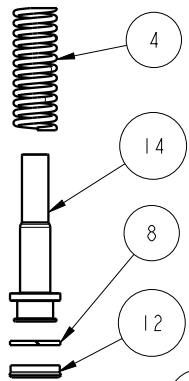
TORQUE TO
40 IN-LB



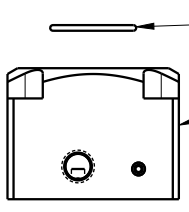
PLUNGER
These work supports are fully
rebuildable to full factory original
capacity by any authorized Vektek repair
facility. All seals can be replaced by
any authorized repair facility.



BODY ASSEMBLY
-NOT REPLACEABLE
TORQUE TO 100 FT-LB

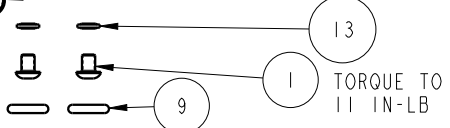


ASSEMBLE LIP
SIDE TOWARD
BOTTOM OF PISTON



TORQUE TO
84 IN-LB

TORQUE TO
18 FT-LB



TORQUE TO
11 IN-LB

NO	QTY	PART NO	DESCRIPTION	STD SEAL KIT	SPRING KIT
1	2	21410006	BHCS, 8-32 x 1/4, SST		
2	1	21410130	BHCS, 1/4-20 x 3/8, SELFLOCK, SST		
3	1	21430011	WASHER		
4	1	23350143	SPRING, COMPRESSION		X
5	1	23350144	SPRING, COMPRESSION		X
6	1	30601144	PLUG, SOCH, SAE 4		
7	1	30603322	PLUG, PIPE, HEX, HOL, 1/8 NPT, STEEL		
8	1	39010072	BU RING, (-111)	X	
9	2	39051012	O-RING, (-109)	X	
10	1	39051175	O-RING, (-021)	X	
11	1	39051176	O-RING, 12mm X 2.0mm	X	
12	1	39052028	SEAL, U-CUP, 7/16 x 3/32 x 5/8	X	
13	2	39055022	SEAL, BONDED, M4		
14	1	81011002	PISTON, WS, FA, HC, 8000		
15	1	81041000	BOLT, CONTACT, WS, FA, HC, 8000		
16	1	91040619	KIT, BASE, WS, FA, MM, HC, 8000		
17	1	39V53005	WIPER, PRESS-IN, (1), VBGV	X	
N/A	N/A	60100144	KIT, SEAL, WS, FA, BM, HC, 8000	NOTED	N/A
N/A	N/A	61100227	KIT, SPRING, WS, FA, HC, 8000	N/A	NOTED
N/A	N/A	IS1023	INSTRUCTION SHEET	N/A	N/A

PARTS LIST	
	VEKTEK, INC. 1334 E. SIXTH AVE. P.O. BOX 625 EMPORIA, KS. 66801 U.S.A.
ASSEMBLIES AFFECTED 10081020	PARTS LIST, ASSY, WS, FA, BM, HC, 8000
SIZE A	REV B

B	4993	RELEASE	RLK	12/19/22
REV	IN ACCORDANCE WITH ECN	EFFECTIVE DATE	REVISED BY	DATE
DRW BY:	ALS	DRAWING STATUS: Released PRODUCTION APPROVED FOR RELEASED STATUS ONLY		
DATE:	3/9/20			