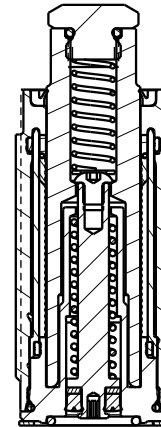




SEE IS1023 FOR SERVICE INSTRUCTIONS.  
LUBRICATE ALL SEALS WITH CLEAN HYDRAULIC OIL  
PRIOR TO ASSEMBLY.  
DO NOT USE SILICONE BASED LUBRICANTS.



APPLY MEDIUM STRENGTH  
THREAD LOCKER (BLUE)  
TORQUE TO 80 IN-LB

TORQUE TO  
11 IN-LB

PLUNGER

These work supports are fully  
rebuildable to full factory original  
capacity by any authorized Vektek repair  
facility. All seals can be replaced by  
any authorized repair facility.

BODY ASSEMBLY  
-NOT REPLACEABLE  
TORQUE TO 50 FT-LB

NO	QTY	PART NO	DESCRIPTION	STD SEAL KIT	SPRING KIT
1	1	21410075	BHCS, 8-32 x 3/16 SELFLOCK, SST		
2	1	21430001	WASHER		
3	1	23350083	SPRING, COMPRESSION		X
4	1	2335023	SPRING, COMPRESSION		X
5	1	39000061	O-RING, (-016)	X	
6	1	39050028	SEAL, BEVEL, 3/16 X 7/16 X 1/8	X	
7	1	39054039	BU RING,(-201)	X	
8	1	55250005	O-RING, (-011)	X	
9	1	81010815	PISTON, WS, FA, 3000 & 13.4KN, LS		
10	1	81040817	BOLT, CONTACT, WS, FA, 2500 & 3000		
11	1	39H11062	GASKET, (-213)	X	
12	1	39V10023	WIPER,PRESS-IN, (3/4), VBGV	X	
N/A	N/A	60100124	KIT, SEAL, WS, FA, CM, HC, 4000	NOTED	N/A
N/A	N/A	61100225	KIT, SPRING, WS, FA, HC, 4000, LS	N/A	NOTED
N/A	N/A	IS1023	INSTRUCTION SHEET	N/A	N/A

ASSEMBLE LIP  
SIDE TOWARD  
BOTTOM OF PISTON

USE GASKET IF REPLACING 10070817 OR  
USE O-RING (RECOMMENDED) IF ABIDES BY  
CAVITY ILS100730  
DO NOT USE BOTH SEALS

### PARTS LIST



VEKTEK, INC.  
1334 E. SIXTH AVE. P.O. BOX 625  
EMPORIA, KS. 66801 U.S.A.

ASSEMBLIES AFFECTED  
10070816

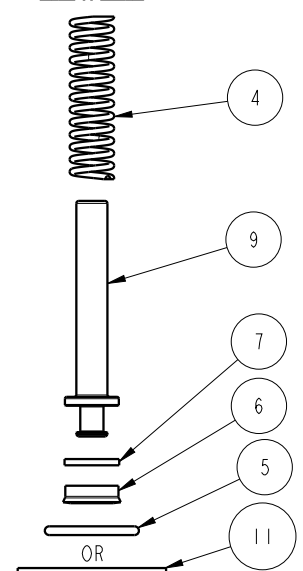
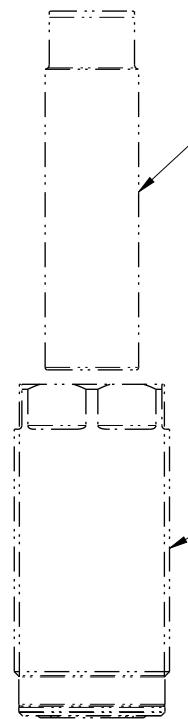
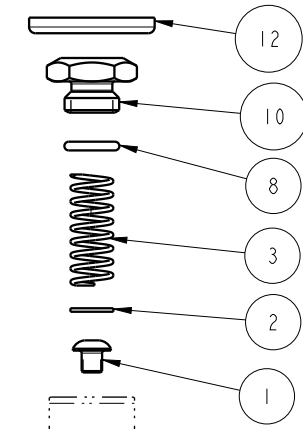
PARTS LIST, ASSY, WS, FA, CM, HC, 4000, LS  
DROP-IN REPLACEMENT FOR 10070817

SIZE  
A PL1108

REV  
A

SHEET 1 OF 1

FORM FEG035\_PL\_ASIZE, REV. B



A	4133	RELEASE	ALS	3/9/20
REV	IN ACCORDANCE WITH ECN	EFFECTIVE DATE	REVISED BY	DATE
DRW BY:	ALS	<b>DRAWING STATUS: Released</b>		
DATE:	3/6/20	PRODUCTION APPROVED FOR RELEASED STATUS ONLY		

Vekttek LLC 1334 East Sixth Ave. P.O. Box 625 Emporia, Ks. 66801 U.S.A.	<b>Instruction Sheet</b>	<b>IS</b>	<b>1023</b>	
		<b>REV:</b>	<b>D, I.A.W ECN4133</b>	
		<b>REV. BY/DATE:</b>	<b>ALS</b>	<b>5/11/20</b>
		<b>APPR/DATE:</b>	<b>TDK</b>	<b>5/11/20</b>
<b>TITLE: Disassembly/Assembly Instructions: Inch and Metric High Capacity Fluid Advance Work Supports</b>				

**These work supports are fully rebuildable to full factory original capacity by any authorized Vekttek repair facility. All seals can be replaced by any authorized repair facility.**

**Read all instructions prior to disassembling!**

**Refer to the illustration on page three for component part numbers and tool list.**

## **Disassembly**

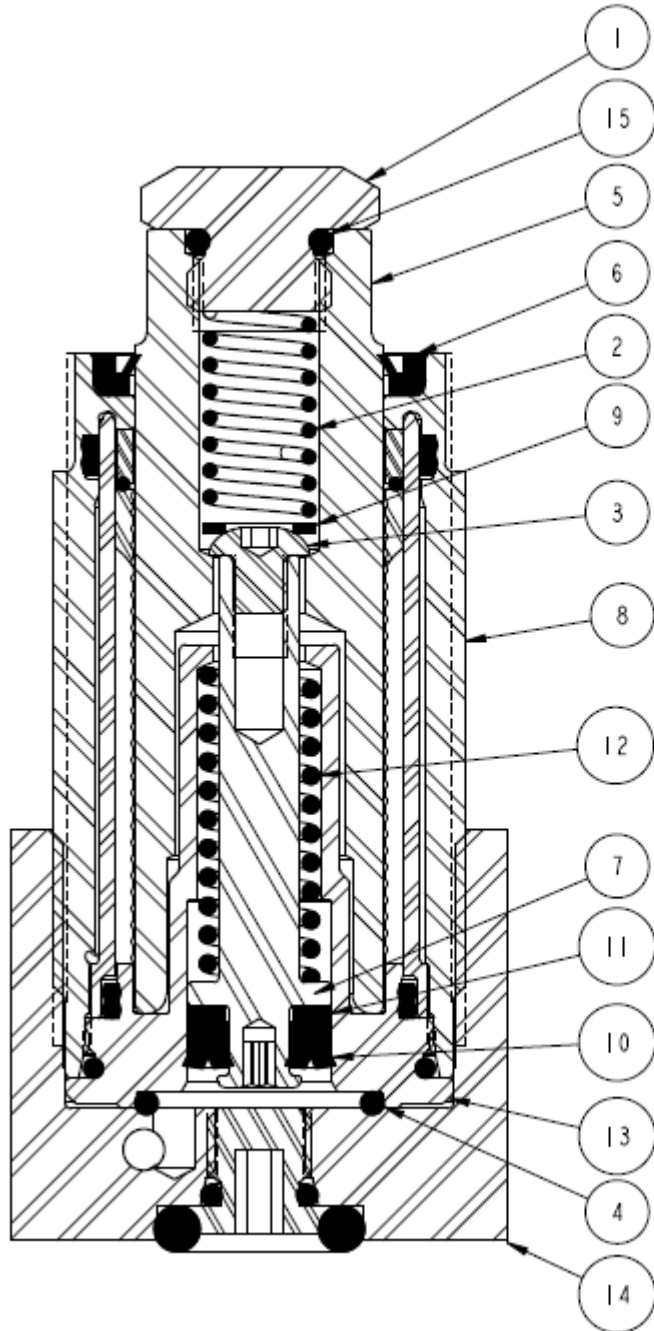
1. Unscrew the cartridge assembly (8) from the base (14) or fixture. **Caution- Use a six-point socket only. Other types of wrenches may damage the work support.**
2. Hold the plunger (5) stationary and unscrew the contact bolt (1). Remove contact o-ring (15) from contact bolt (1).
3. Remove the spring (2) and spacer (9) from inside the plunger (5).
4. Hold the piston (7) stationary and unscrew the cap screw (3).
5. Slide the plunger (5) out of the top of the cartridge assembly (8) and then push the piston (7) and spring (12) out of the retainer (13).
6. Remove the wiper (6) from the cartridge assembly (8).
7. Remove the piston seal (10) and piston seal back-up ring (11) from the piston (7), and the seal (4) from the base (14) or fixture.
8. Clean all parts thoroughly and set aside to dry.

Vekttek LLC 1334 East Sixth Ave. P.O. Box 625 Emporia, Ks. 66801 U.S.A.	Instruction Sheet	IS	1023	
		REV:	D, I.A.W ECN4133	
		REV. BY/DATE:	ALS	5/11/20
		APPR/DATE:	TDK	5/11/20
<b>TITLE: Disassembly/Assembly Instructions: Inch and Metric High Capacity Fluid Advance Work Supports</b>				

## Assembly

1. Lubricate all O-rings, gaskets, back-up rings and seals with clean hydraulic fluid (Vekttek 65-0010-01 or equivalent). Apply Loctite primer N® or equivalent to the threads of the contact bolt (1) and the retainer (13) and set aside to dry.
2. First install the back-up ring (11) then the piston seal (10) onto the piston (7) with the sealing lips of the piston seal (10) toward the piston (7) base.
3. Slide the spring (12) onto the piston (7) and insert both parts into the retainer (13).
4. Insert the plunger (5) into the top of the cartridge assembly (8).
5. While holding the piston (7) stationary insert the cap screw (3) into the top of the plunger (5) and thread the cap screw (3) into the piston (7). Tighten to the specification on the parts list.
6. Insert the flat washer (9) and the spring (2) into the top of the plunger (5).
7. Install contact o-ring (15) onto contact bolt (1). Apply one drop of Loctite 243® or equivalent to the threads of the contact bolt (1). While holding the plunger (5) stationary tighten the contact bolt (1) to the plunger (5). Tighten to the torque specification on the parts list.
8. If using o-ring, place the o-ring (4) flat in the bottom of the retainer (13). Insert the work support assembly into the base (14) or mounting cavity and tighten it to the torque specification on the parts list.  
**Caution- Use a six-point socket only. Other types of wrenches may damage the work support. Note- Use o-ring if cavity abides by ILS100730 or ILMV100723. Use o-ring OR gasket, not both.**
9. If using gasket, place the gasket (4) flat in the bottom of the base (14) or mounting cavity. Insert the work support assembly into the base (14) or mounting cavity and tighten it to the torque specification on the parts list.  
**Caution- Use a six-point socket only. Other types of wrenches may damage the work support.**

<b>Vekttek LLC</b> 1334 East Sixth Ave. P.O. Box 625 Emporia, Ks. 66801 U.S.A.	<b>Instruction Sheet</b>	<b>IS 1023</b>	
		<b>REV: D, I.A.W ECN4133</b>	
		<b>REV. BY/DATE: ALS</b>	<b>5/11/20</b>
		<b>APPR/DATE: TDK</b>	<b>5/11/20</b>
<b>TITLE: Disassembly/Assembly Instructions: Inch and Metric High Capacity Fluid Advance Work Supports</b>			



15	CONTACT O-RING
14	BASE
13	RETAINER
12	CONTACT SPRING
11	BACK-UP RING
10	PISTON SEAL
9	FLAT WASHER
8	CARTRIDGE ASSY
7	PISTON
6	WIPER
5	PLUNGER
4	SEAL
3	CAP SCREW
2	CONTACT SPRING
1	CONTACT BOLT
<b>Item</b>	<b>Description</b>