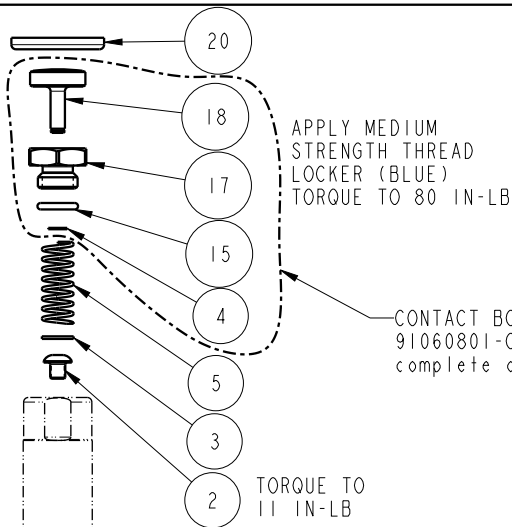


SEE IS1023 FOR SERVICE INSTRUCTIONS.
LUBRICATE ALL SEALS WITH CLEAN HYDRAULIC OIL
PRIOR TO ASSEMBLY.
DO NOT USE SILICONE BASED LUBRICANTS.



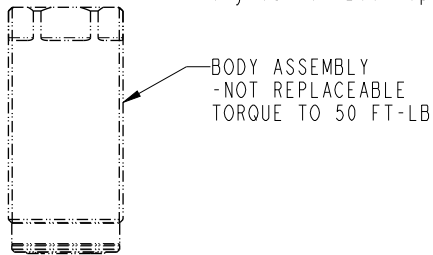
APPLY MEDIUM STRENGTH THREAD LOCKER (BLUE) TORQUE TO 80 IN-LB

CONTACT BOLT PPS 91060801-Order for complete assembly

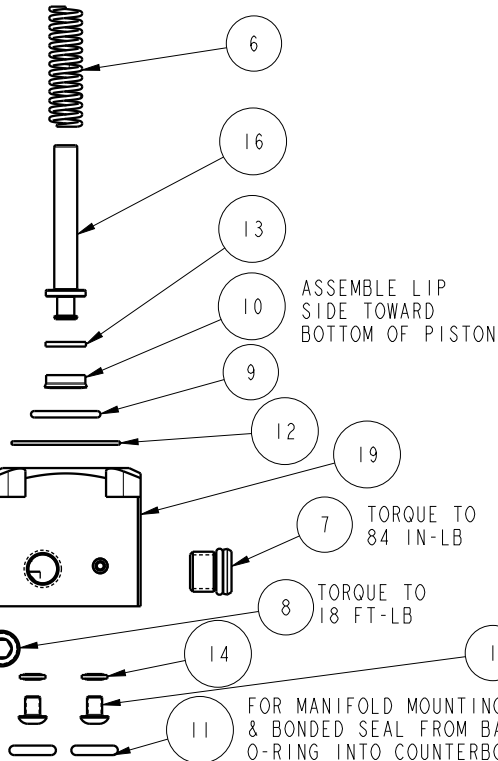
TORQUE TO 11 IN-LB

PLUNGER

These work supports are fully rebuildable to full factory original capacity by any authorized Vektek repair facility. All seals can be replaced by any authorized repair facility.



BODY ASSEMBLY -NOT REPLACEABLE TORQUE TO 50 FT-LB



ASSEMBLE LIP SIDE TOWARD BOTTOM OF PISTON

TORQUE TO 84 IN-LB

TORQUE TO 18 FT-LB

TORQUE TO 11 IN-LB

FOR MANIFOLD MOUNTING, REMOVE BHCS & BONDED SEAL FROM BASE AND INSERT O-RING INTO COUNTERBORE

NO	QTY	PART NO	DESCRIPTION	STD SEAL KIT	SPRING KIT
1	2	21410006	BHCS, 8-32 x 1/4, SST		
2	1	21410075	BHCS, 8-32 x 3/16 SELFLOCK, SST		
3	1	21430001	WASHER		
4	1	23010008	RETAINING RING, C, EXT, 5/32		
5	1	23350083	SPRING, COMPRESSION		X
6	1	23355023	SPRING, COMPRESSION		X
7	1	30601144	PLUG, SOCH, SAE 4		
8	1	30603322	PLUG, PIPE, HEX, HOL, 1/8 NPT, STEEL		
9	1	39000061	O-RING, (-016)	X	
10	1	39050028	SEAL, BEVEL, 3/16 X 7/16 X 1/8	X	
11	2	39051012	O-RING, (-109)	X	
12	1	39051159	O-RING, 28mm X 1mm	X	
13	1	39054039	BU RING,(-201)	X	
14	2	39055022	SEAL, BONDED, M4		
15	1	55250005	O-RING, (-011)	X	
16	1	81010815	PISTON, WS, FA, 3000 & 13.4KN, LS		
17	1	81060801	BOLT, ADAPTER, WS, 4000, PPS		
18	1	81060802	BOLT, CONTACT, WS, 4000, PPS		
19	1	91040827	KIT, BASE, WS, FA, MM, HC, 4000, PPS		
20	1	39V10023	WIPER,PRESS-IN, (3/4), VBGV	X	
N/A	N/A	60100122	KIT, SEAL, WS, FA, BM, HC, 4000, PPS	NOTED	N/A
N/A	N/A	61100225	KIT, SPRING, WS, FA, HC, 4000, LS	N/A	NOTED
N/A	N/A	IS1023	INSTRUCTION SHEET	N/A	N/A
N/A	N/A	IS5003	INSTRUCTION SHEET, PPS	N/A	N/A

PARTS LIST



VEKTEK, INC.
1334 E. SIXTH AVE. P.O. BOX 625
EMPORIA, KS. 66801 U.S.A.

ASSEMBLIES AFFECTED
10080826PS

PARTS LIST, ASSY, WS, FA, BM, HC, 4000, LS, PPS

SIZE A
PL1115

REV B

SHEET 1 OF 1

B	4993	RELEASE	RLK	12/14/22
REV	IN ACCORDANCE WITH ECN	EFFECTIVE DATE	REVISED BY	DATE
DRW BY:	ALS	DRAWING STATUS: Released		
DATE:	3/9/20	PRODUCTION APPROVED FOR RELEASED STATUS ONLY		

FORM FEG035_PL_ASIZE, REV. B