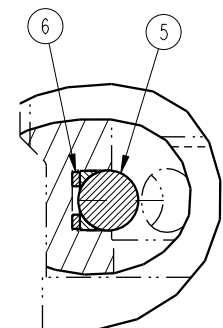
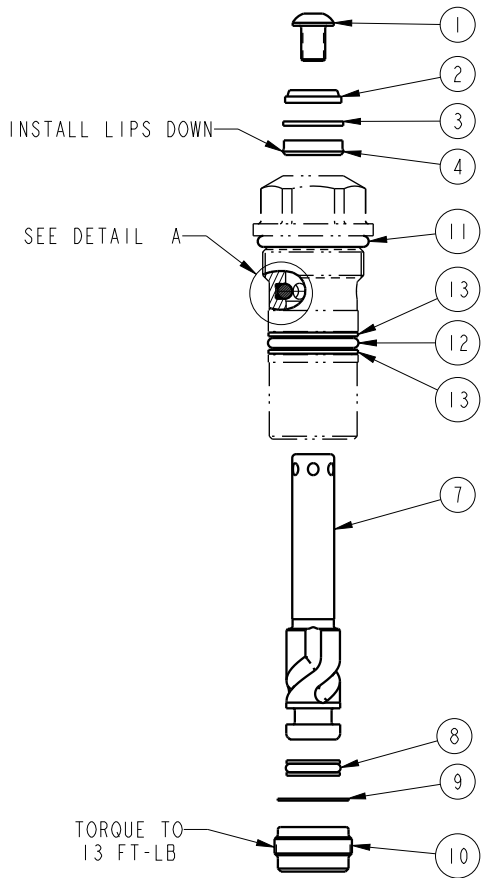



NO.	QTY.	DESCRIPTION				STANDARD SEAL KIT	FLUOROCARBON SEAL KIT
			15-1205-02-X	15-1209-02-X	15-1213-02-X		
1	1	BUTTON HEAD CAP SCREW	21-4110-01	21-4100-09	21-4100-39	NO	NO
2	1	WIPER, ROD (FLUOROCARBON)	39-0530-04	39-0530-01	39-0530-00	YES	YES
3	1	BACK-UP RING, ROD	39-F540-00	39-F540-01	39-F540-02	YES	YES
4	1	SEAL, ROD (STANDARD)	39-0100-38	39-0100-20	39-0110-46	YES	NO
	1	SEAL, ROD (FLUOROCARBON)	39-0520-14	39-V100-20	39-V110-46	NO	YES
5	1	BALL, ALLOY	23-6000-14	23-6000-11	23-6000-02	YES	YES
6	1	BALL SEAT ASSEMBLY	90-1999-88	90-1999-89	90-1999-90	YES	YES
7	1	PLUNGER	81-5105-00	81-5109-01	81-5113-01	NO	NO
8	1	SEAL, PLUNGER (STANDARD)	39-H100-37	39-H100-18	39-H110-30	YES	NO
	1	SEAL, PLUNGER (FLUOROCARBON)	39-V100-37	39-V100-18	39-V110-30	NO	YES
9	1	GASKET	39-T550-01	39-T550-02	39-T550-03	YES	YES
10	1	RETAINER	81-5305-02	81-5309-03	81-5313-02	NO	NO
11	1	O-RING (STANDARD)	39-0000-57	39-0010-42	39-0010-40	YES	NO
	1	O-RING (FLUOROCARBON)	39-0510-31	39-0510-18	39-0510-29	NO	YES
12	1	O-RING (STANDARD)	39-0000-56	39-0010-41	39-0010-39	YES	NO
	1	O-RING (FLUOROCARBON)	39-0510-26	39-0510-19	39-0510-28	NO	YES
13	2	BACK-UP RING (STANDARD)	39-0100-54	39-0110-80	39-0210-06	YES	NO
	2	BACK-UP RING (FLUOROCARBON)	39-0540-24	39-0540-00	39-0110-68	NO	YES
N/A	N/A	SEAL KIT (STANDARD)	60-1502-30	60-1502-37	60-1502-38	INCLUDED IN KIT	
N/A	N/A	SEAL KIT (FLUOROCARBON)	6V-1502-30	6V-1502-37	6V-1502-38		
N/A	N/A	INSTALLATION INSTRUCTIONS	IS-1504	IS-1504	IS-1504	INCLUDED WITH PARTS LIST	



DETAIL A  
SCALE 2.000

- NOTES:  
 1. APPLY LUBRICANT TO ALL SEALS PRIOR TO INSTALLATION.  
 2. DO NOT USE SILICONE TYPE LUBRICANTS.

<b>PARTS LIST</b>	 VEKTEK, INC. 1334 E. SIXTH AVE. P.O. BOX 625 EMPORIA, KS. 66801 U.S.A.
	<b>PARTS LIST, SC, VS, CM, DA</b>  SIZE A <b>PL15114</b> REV D

D	5206	RELEASE	BDC	11/21/23
REV	IN ACCORDANCE WITH ECN	EFFECTIVE DATE	REVISED BY	DATE
DRW BY: RLK	<b>DRAWING STATUS: Released</b> PRODUCTION APPROVED FOR RELEASED STATUS ONLY			
DATE: 5/12/21				

ASSEMBLIES AFFECTED  
 15-1205-02-X  
 15-1209-02-X  
 15-1213-02-X

SHEET 1 OF 1