



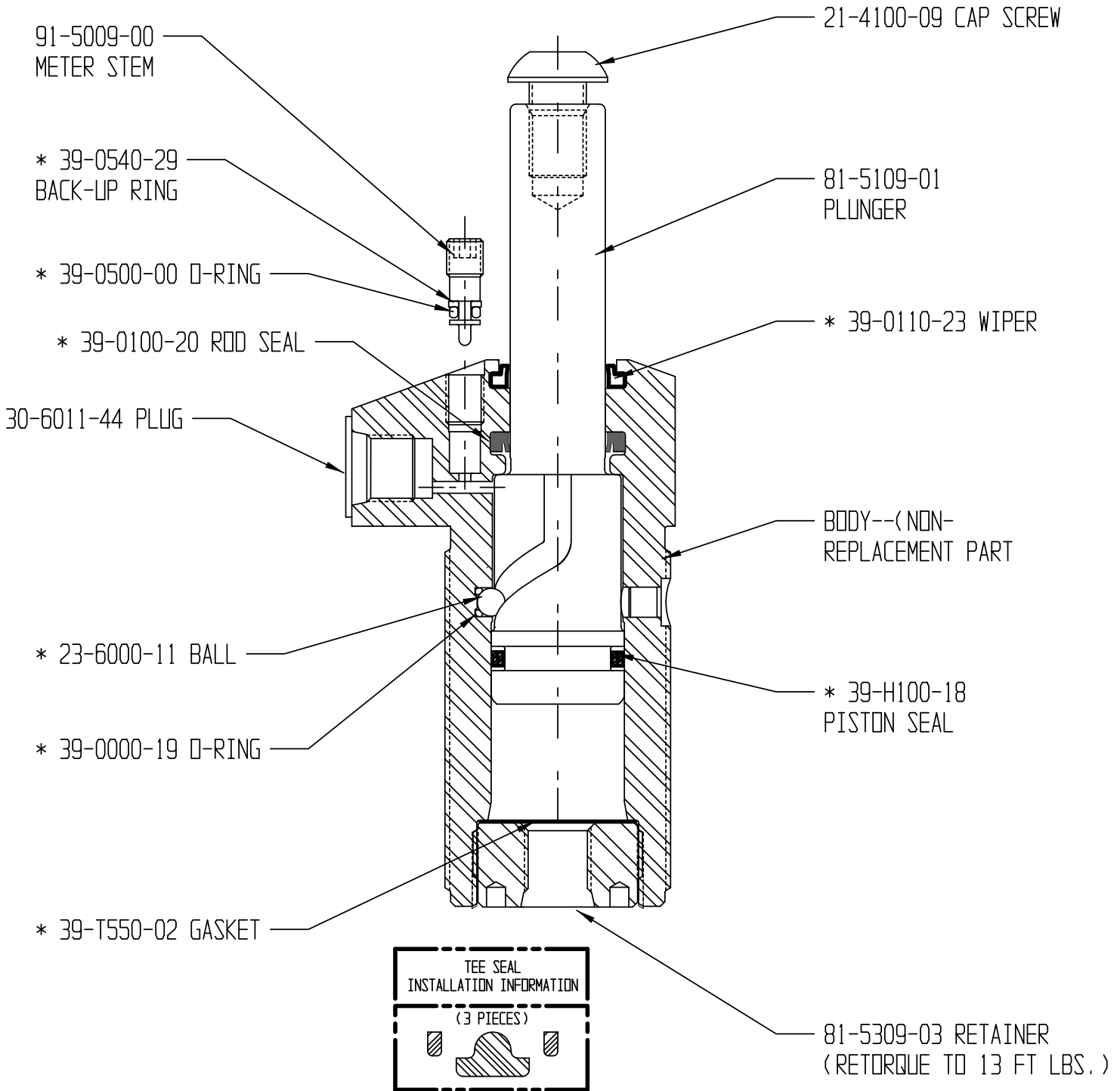
VEKTEK, INC.
 1334 E. SIXTH AVE.
 P.O. BOX 625
 EMPORIA, KS. 66801
 U.S.A.

PARTS LIST

PL-1572
 REV. E ECN1819
 PAGE 1 OF 1

ASSEMBLIES AFFECTED: 15-0209-29

DRAWN/DATE
 BLUSH
 08/09/97



APPLY LUBRICANT TO ALL SEALS PRIOR TO INSTALLATION
 DO NOT USE SILICONE TYPE LUBRICANTS.

ALSO AVAILABLE:

* INCLUDED IN SEAL KIT NO. 60-1502-08

TS1502 INSTALLATION SHEET



VEKTEK, INC.
1334 E. SIXTH AVE.
P.O. BOX 625
EMPORIA, KS. 66801
U.S.A.

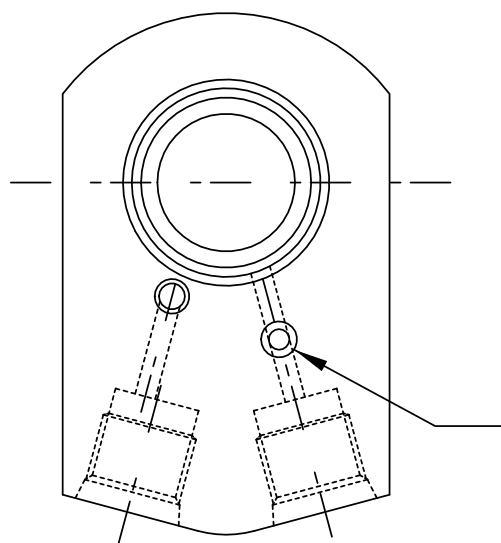
INSTRUCTION SHEET

IS1503

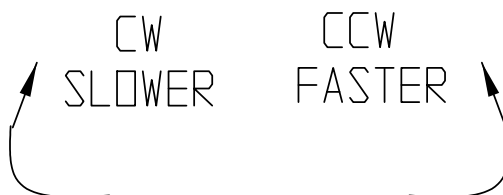
REV. A
PAGE 1 OF 1

DRAWN/DATE
BLUSH
02/08/96

ASSEMBLIES AFFECTED



1/8" SOCKET
RESTRICTOR
ADJUSTMENT SCREW



NOTE: TO ADJUST: TURN SCREW CLOCKWISE UNTIL IT STOPS. TURN CCW TO ADJUST SPEED TO A MAXIMUM OF TWO FULL TURNS.

WARNING: DO NOT TURN SCREW MORE THAN TWO FULL TURNS CCW FROM FULL DOWN POSITION. LEAKAGE MAY OCCUR AS A RESULT.