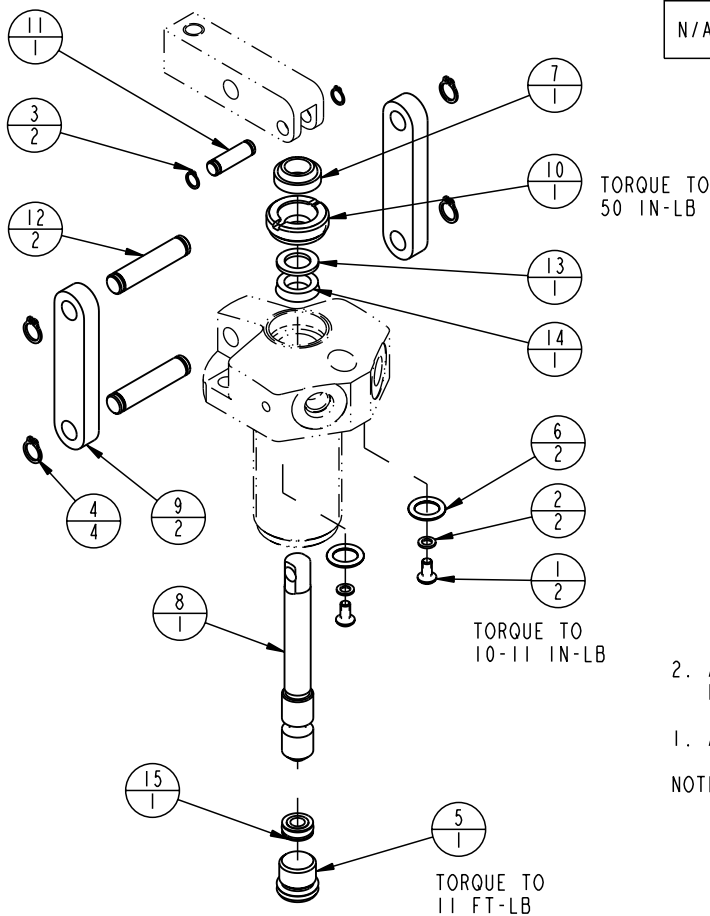


MODEL NO.			MODEL NAME
16620400			ASSY, LC, DA, 450
NO.	QTY	PART NO.	DESCRIPTION
1	2	21500019	BHCS, METRIC
2	2	21500200	WASHER
3	2	23050020	RING, RTNG, EXT, 0.188
4	4	23050021	RING, RTNG, EXT, 0.250
5	1	30670001	PLUG, SAE 4, FKM
6	2	39051025	O-RING
7	1	39053025	SEAL, WIPER, SNAP-IN, (5/16)
8	1	81600006	PLUNGER, LC, DA, 450/2 KN
9	2	81600021	LINK, LC, 450 1b
10	1	81600036	RETAINER, LC, 450 1b
11	1	81600076	PIN, LC, SHORT, 450
12	2	81600081	PIN, LC, LONG, 450
13	1	39F54005	RING, BU, (-109)
14	1	39V52031	SEAL, BEVEL, 5/16 x 3/32 x 1/2
15	1	39V52037	SEAL, T, PISTON, 3/16 X 3/32 X 3/8
N/A	N/A	6V160001	KIT, SEAL, LC, 450/2 KN, FKM (for date codes before 33/06)
N/A	N/A	6V160009	KIT, SEAL, LC, 450/2 KN, FKM (for date codes after 33/06)



2. ALL SEALS, BU RINGS, RETAINING RINGS, O-RINGS, AND PLUGS ARE INCLUDED IN THE SEAL KIT.

1. APPLY LUBRICANT TO ALL SEALS PRIOR TO ASSEMBLY.

NOTE:

PARTS LIST



VEKTEK, INC.
1334 E. SIXTH AVE. P.O. BOX 625
EMPORIA, KS. 66801 U.S.A.

ASSEMBLIES AFFECTED

PARTS LIST, LC, DA, 450

16620400

6V160001

SIZE

PL1601

REV

E

E	1719	RELEASE	RC	06-19-07
REV	IN ACCORDANCE WITH ECN	EFFECTIVE DATE	REVISED BY	DATE
DRW BY:	K. ROEMER	DRAWING STATUS: Released		
DATE:	07/30/04	PRODUCTION APPROVED FOR RELEASED STATUS ONLY		

FORM FEG035_PL_ASIZE, REV. A

SHEET 1 OF 1