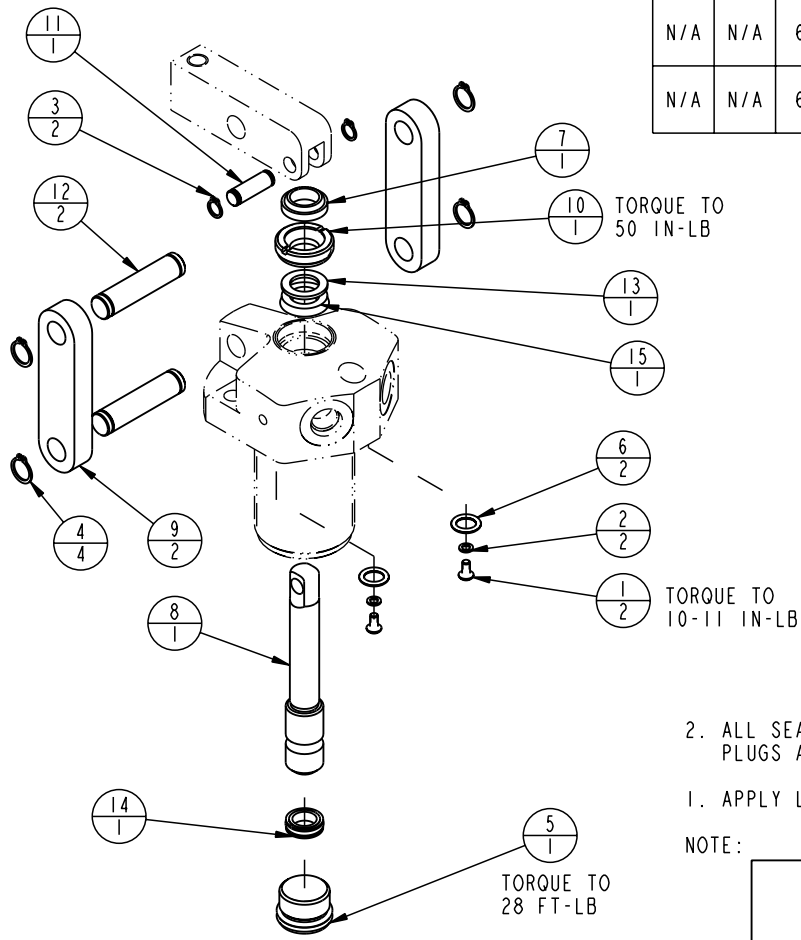


MODEL NO.			MODEL NAME
16620600			ASSY, LC, DA, 1100
NO.	QTY	PART NO.	DESCRIPTION
1	2	21500019	BHCS, METRIC
2	2	21500200	WASHER
3	2	23050021	RING, RTNG, EXT, 0.250
4	4	23050022	RING, RTNG, EXT, 0.375
5	1	30670002	PLUG, SAE 8, FKM
6	2	39051025	O-RING
7	1	39053026	SEAL, WIPER, SNAP-IN, (7/16)
8	1	81600007	PLUNGER, LC, DA, 1100/5 KN
9	2	81600022	LINK, LC, 1100 lb
10	1	81600037	RETAINER, LC, 1100 lb
11	1	81600077	PIN, LC, SHORT, 1100
12	2	81600082	PIN, LC, LONG, 1100
13	1	39F54006	RING, BU, (-205)
14	1	39V10037	SEAL, T, PISTON, 3/8 X 5/32 X 9/16
15	1	39V52032	SEAL, BEVEL, 7/16 x 1/8 x 11/16
N/A	N/A	6V160002	KIT, SEAL, LC, 1100/5 KN, FKM (for date code before 33/06)
N/A	N/A	6V160010	KIT, SEAL, LC, 1100/5 KN, FKM (for date code after 33/06)



2. ALL SEALS, BU RINGS, RETAINING RINGS, O-RINGS, AND PLUGS ARE INCLUDED IN THE SEAL KIT.

1. APPLY LUBRICANT TO ALL SEALS PRIOR TO ASSEMBLY.

NOTE:

PARTS LIST



VEKTEK, INC.
1334 E. SIXTH AVE. P.O. BOX 625
EMPORIA, KS. 66801 U.S.A.

ASSEMBLIES AFFECTED

PARTS LIST, LC, DA, 1100

16620600

6V160002

SIZE

PL1602

REV

E

E	1719	RELEASE	RC	06-19-07
REV	IN ACCORDANCE WITH ECN	EFFECTIVE DATE	REVISED BY	DATE
DRW BY:	K. ROEMER	DRAWING STATUS: Released		
DATE:	07/30/04	PRODUCTION APPROVED FOR RELEASED STATUS ONLY		

FORM FEG035_PL_ASIZE, REV. A

SHEET 1 OF 1