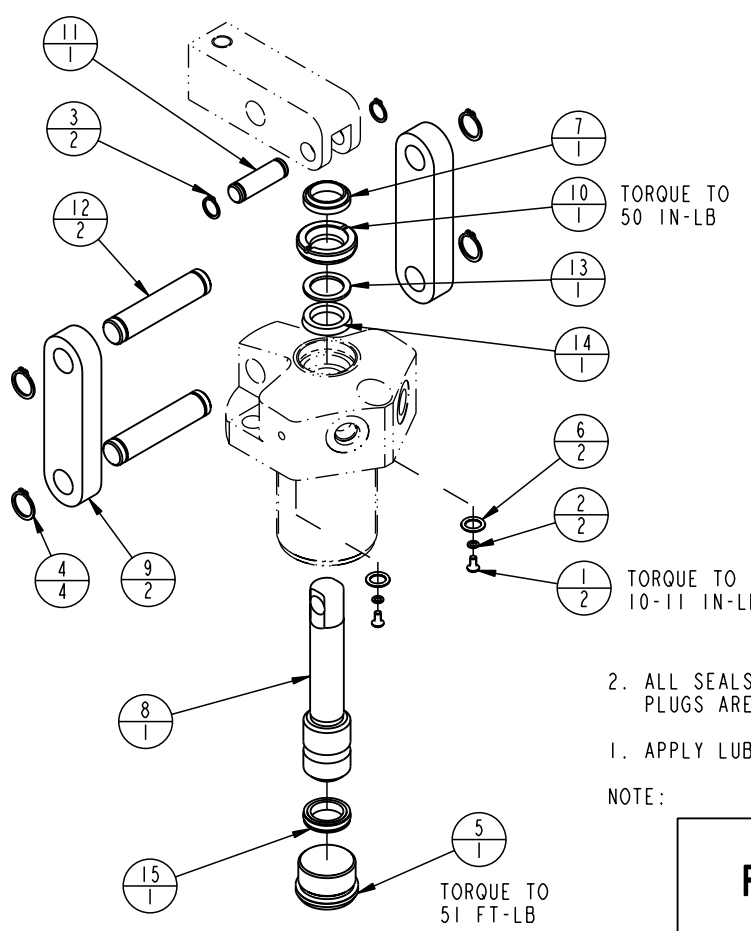


MODEL NO.			MODEL NAME
16620900			ASSY, LC, DA 2600
NO.	QTY	PART NO.	DESCRIPTION
1	2	21500019	BHCS, METRIC
2	2	21500200	WASHER
3	2	23050022	RING, RTNG, EXT, 0.375
4	4	23050023	RING, RTNG, EXT, 0.500
5	1	30670003	PLUG, SAE 12, FKM
6	2	39051025	O-RING
7	1	39053027	SEAL, WIPER, SNAP-IN, (5/8)
8	1	81600008	PLUNGER, LC, DA, 2600/11 KN
9	2	81600023	LINK, LC, 2600 1b
10	1	81600038	RETAINER, LC, 2600 1b
11	1	81600078	PIN, LC, SHORT, 2600
12	2	81600083	PIN, LC, LONG, 2600
13	1	39F54001	RING, BU, (-208)
14	1	39V52033	SEAL, BEVEL, 5/8 x 1/8 x 7/8
15	1	39V55008	SEAL, T, PISTON, 5/8 x 1/8 x 7/8
N/A	N/A	6VI60003	KIT, SEAL, LC, 2600/11KN, FKM



2. ALL SEALS, BU RINGS, RETAINING RINGS, O-RINGS, AND PLUGS ARE INCLUDED IN THE SEAL KIT.
1. APPLY LUBRICANT TO ALL SEALS PRIOR TO ASSEMBLY.
- NOTE:

PARTS LIST	
	VEKTEK, INC. 1334 E. SIXTH AVE. P.O. BOX 625 EMPORIA, KS. 66801 U.S.A.
ASSEMBLIES AFFECTED 16620900 6VI60003	PARTS LIST, LC, DA, 2600 *****
SIZE A	PL1603

E	1765	RELEASE	RC	10-1-07
REV	IN ACCORDANCE WITH ECN	EFFECTIVE DATE	REVISED BY	DATE
DRW BY:	DRAWING STATUS: Released			
DATE:	PRODUCTION APPROVED FOR RELEASED STATUS ONLY			

SHEET 1 OF 1