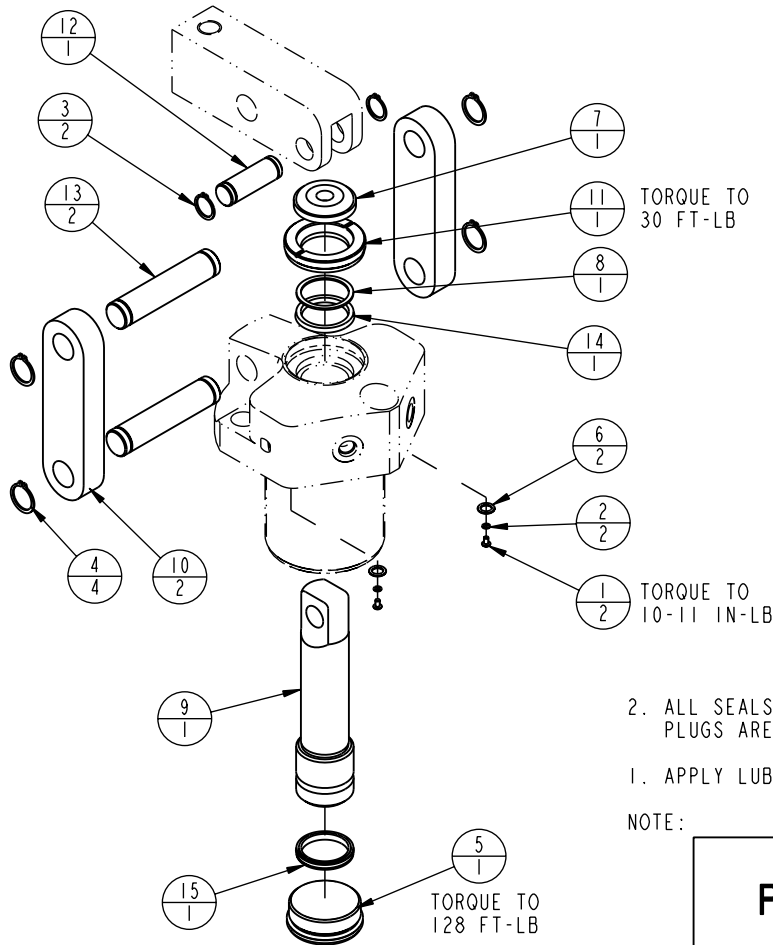


MODEL NO.			MODEL NAME
16621600			ASSY, LC, DA, 6800
NO.	QTY	PART NO.	DESCRIPTION
1	2	21500019	SCREW, CAP, BTNH, M3 X 6, ALY
2	2	21500200	WASHER
3	2	23050024	RING, RTNG, EXT, 0.625
4	4	23050025	RING, RTNG, EXT, 0.750
5	1	30670005	PLUG, SAE 24, FKM
6	2	39051025	O-RING, (-011)
7	1	39053030	SEAL, WIPER, SNAP-IN, (1-1/4)
8	1	39054008	RING, BU, (-218)
9	1	81600010	PLUNGER, LC, DA, 6800/30 KN
10	2	81600025	LINK, LC, 6800 1b
11	1	81600040	RETAINER, LC, 6800
12	1	81600080	PIN, LC, SHORT, 6800
13	2	81600085	PIN, LC, LONG, 6800
14	1	39V52035	SEAL, BEVEL, 1-1/4 x 1/8 x 1-1/2
15	1	39V55009	SEAL, T, PISTON, 1 1/4X1/8X1 1/2
N/A	N/A	6V-1600-05	KIT, SEAL, LC, 6800/30KN, FKM



2. ALL SEALS, BU RINGS, RETAINING RINGS, O-RINGS, AND PLUGS ARE INCLUDED IN THE SEAL KIT.

1. APPLY LUBRICANT TO ALL SEALS PRIOR TO ASSEMBLY.

NOTE:

PARTS LIST



VEKTEK, INC.
1334 E. SIXTH AVE. P.O. BOX 625
EMPORIA, KS. 66801 U.S.A.

ASSEMBLIES AFFECTED
16-6216-00

PARTS LIST, LC, DA, 6800

SIZE
A

PL1605

REV
E

FORM FEG035_PL_ASIZE, REV. A

E	2233	RELEASE	MES	09-27-10
REV	IN ACCORDANCE WITH ECN	EFFECTIVE DATE	REVISED BY	DATE
DRW BY:	K. ROEMER	DRAWING STATUS: Released		
DATE:	07/30/04	PRODUCTION APPROVED FOR RELEASED STATUS ONLY		

SHEET 1 OF 1